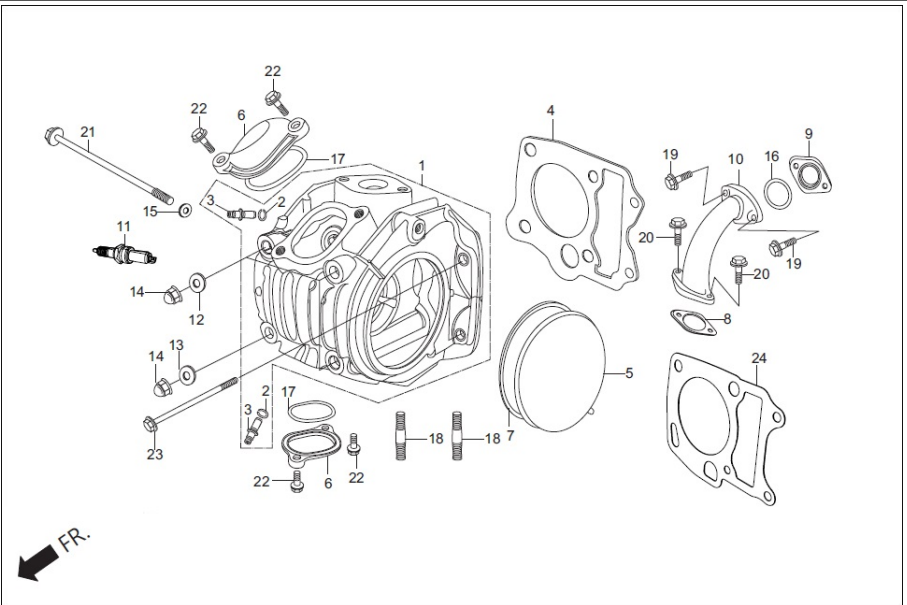


# **PARTS CATALOGUE**

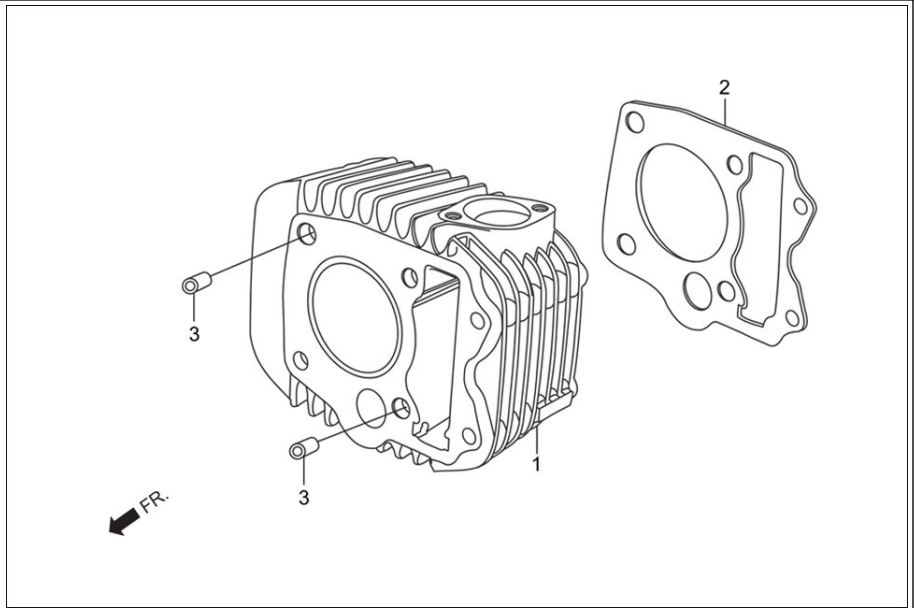
**ECO 125 (Feb, 2020)**

# E-1 CYLINDER HEAD



<b>Service Item</b>	<b>F.R.T.</b>	<b>Group Number: E-1 Model :: ECO 125 (Feb, 2020)</b>			
* HEAD COMP CYLINDER	1.6	<b>Ref No.</b>	<b>Part Number</b>	<b>Description</b>	<b>Req.</b>
* GASKET, CYLINDER HEAD	--	1	12200-AAG-400	HEAD COMP., CYLINDER	1
* COVER, 'L' CYLINDER HEAD SIDE	0.2	2	12213-KSP-910	CLIP VALVE GUIDE	2
* SPARK PLUG	0.1	3	12237-KPH-305	GUIDE, VALVE (OS)	2
* INSULATOR, CARBURETTOR	0.2	4	12251-KPH-901	GASKET, CYLINDER HEAD	1
* PIPE COMP INLET	0.3	5	12341-KTR-H80	COVER L CYL. HEAD SIDE	1
		6	12361-KTR-A00	COVER, TAPPET ADJUSTING HOLE.	2
		7	12395-KPH-901	GASKET, L CYL.HEAD SIDE COVER	1
			12395-AAG-101	GASKET L CYL HEAD SIDE COVER	1
		8	16201-KTR-A00	GASKET, CARBU INSULATOR	1
		9	16211-KTC-900	INSULATOR, CARBURETTOR	1
		10	17110-AAG-400	PIPE COMP., INLET	1
		11	31916-KPH-90099	SPARK PLUG	1
		12	90441-286-000	WASHER, SEALING, 8 MM	3
		13	90441-ME9-000	WASHER, SEALING, 8 MM	1
		14	90443-107-000	NUT, CAP, 8 MM	4
		15	90461-357-000	WASHER, SEALING, 12 MM	1
		16	91304-KPG-T00	O-RING , 28 X 2.4	1
		17	91372-KPH-900	O-RING , TAPPET ADJUSTING	2
		18	92900-08025-0E	BOLT STUD 2,8X25	2
		19	95701-06022-00	BOLT, FLANGE, SH. 6 X 22	2
		20	95701-06025-00	BOLT, FLANGE, 6X 25	2
		21	95701-06110-00	BOLT, FLANGE, 6 X 110	1
		22	96001-06020-00	BOLT, FLANGE, SH. 6 X 20	4
		23	96001-06095-00	BOLT, FLANGE, SH. 6 X 95	2
		24	12191-AAG-101	GASKET CYLINDER	1

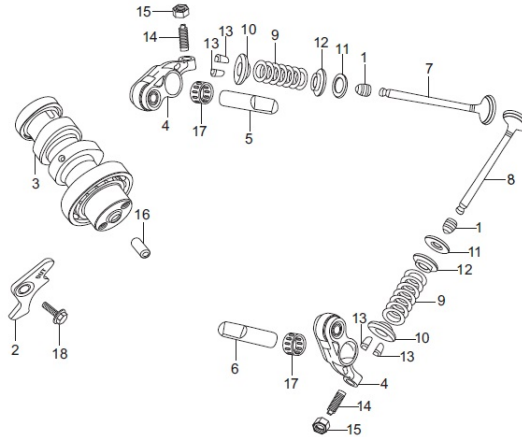
**E-2**  
CYLINDER



Service Item	F.R.T.
* CYLINDER	1.2
* GASKET, CYLINDER	1.1

Group Number: E-2 Model :: ECO 125 (Feb, 2020)				
Ref No.	Part Number	Description	Req.	
1	12100-KTR-H80	CYLINDER COMP.	1	
2	12191-KPH-901	GASKET, CYLINDER	1	
3	94301-10120	DOWEL PIN, 10X12	2	

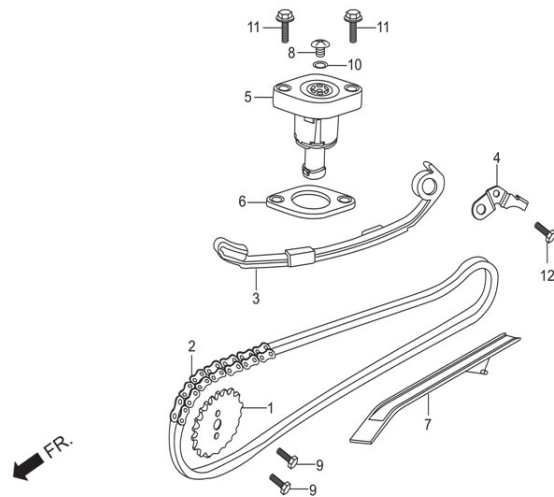
**E-3**  
CAM SHAFT/VALVE



← FR.

<b>Service Item</b>	<b>F.R.T.</b>	<b>Group Number: E-3 Model :: ECO 125 (Feb, 2020)</b>			
* SHAFT COMP, CAM	0.7	<b>Ref No.</b>	<b>Part Number</b>	<b>Description</b>	<b>Req.</b>
* ARM, VALVE ROCKER (ONE OR ALL)	1.1	1	12209-AAN-410	SEAL VALVE STEM	2
* VALVE (ADD 02 FOR EACH) (INC REFACING)	--	2	12211-KPH-900	PLATE, STOPPER	1
(EXC VALVE GUIDE REPLACEMENT)	1.4	3	14100-KTC-900	SHAFT COMP., CAM	1
* SPRING, VALVE	--	4	14430-KTC-900	ARM COMP., VALVE ROCKER	2
	--	5	14451-KTC-900	SHAFT, IN. ROCKER ARM	1
	--	6	14452-KTC-900	SHAFT, EXH. ROCKER ARM	1
	--	7	14711-KTC-900	VALVE, INLET	1
	--	8	14721-KTC-900	VALVE, EXHAUST	1
	--	9	14751-KPH-900	SPRING, VALVE	2
	--	10	14771-GB4-680	RETAINER, VALVE SPRING	2
	--	11	14775-KFM-900	SEAT, VALVE SPRING OUTER	2
	--	12	14776-KPH-900	SEAT VALVE, SPRING	2
	--	13	14781-MA6-000	COTTER, VALVE	4
	--	14	90012-333-000R	SCREW, TAPPET ADJUSTING	2
	--	15	90206-001-000	NUT, TAPPET ADJUSTING	2
	--	16	90702-GB6-910	PIN, DOWEL, 8 X 12	1
	--	17	91105-KTC-900	BRG., ROCKER ARM SHAFT	2
	--	18	95701-06012-00	BOLT, FLANGE, 6X12	1

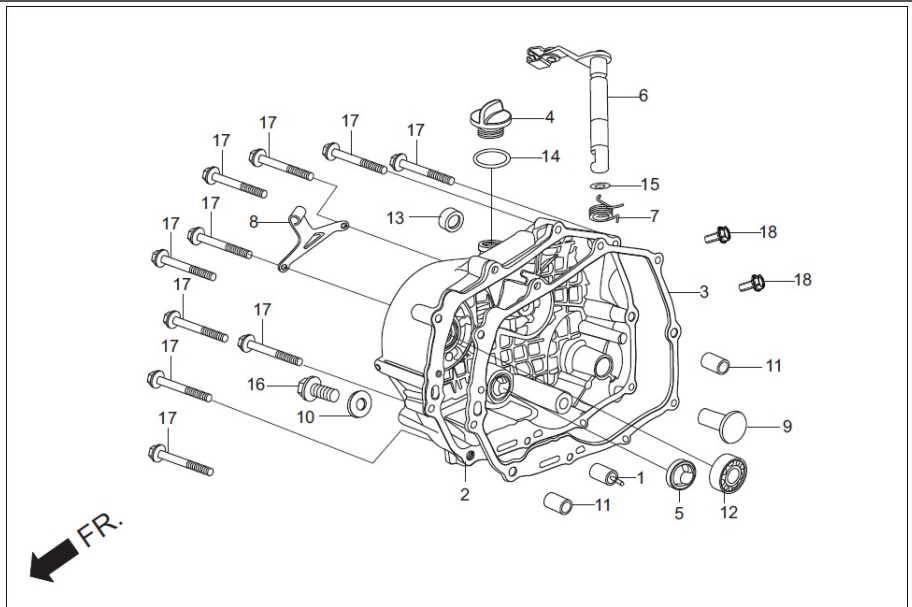
**E-4**  
CAM CHAIN TENSIONER



<b>Service Item</b>	<b>F.R.T.</b>	<b>Group Number: E-4 Model :: ECO 125 (Feb, 2020)</b>			
* SPROCKET, CAM(34T)	0.7	<b>Ref No.</b>	<b>Part Number</b>	<b>Description</b>	<b>Req.</b>
* CHAIN, CAM	1.6	1	14321-AAG-400	SPROCKET CAM	1
* TENSIONER ASSY CAM CHAIN	1.7	2	14401-AAG-00099	SILENT CHAIN ASSEMBLY	1
* LIFTER ASSY TENSIONER	0.4	3	14510-KTC-901	TENSION ASSY. CAM CHAIN	1
*GASKET TENSIONER LIFTER	--	4	14515-KTC-901	PLATE TENSIONER SET	1
*GUIDE CAM CHAIN	*2.8	5	14520-KTC-902	LIFTER ASSY., TENSIONER	1
		6	14560-KSP-910	GASKET, TENSIONER LIFTER	1
		7	14610-KPH-900	GUIDE , CAM CHAIN	1
		8	90005-KY7-000	SCREW, PAN, 6X6	1
		9	90083-KVH-900	BOLT, KNOCK, 5 MM	2
		10	91306-MG3-000	O- RING, 1.5X9.5	1
		11	96001-06022-00	BOLT, FLANGE, SH. 6 X 22	2
		12	96001-06014-00	BOLT, FLANGE, SH. 6 X 14	1

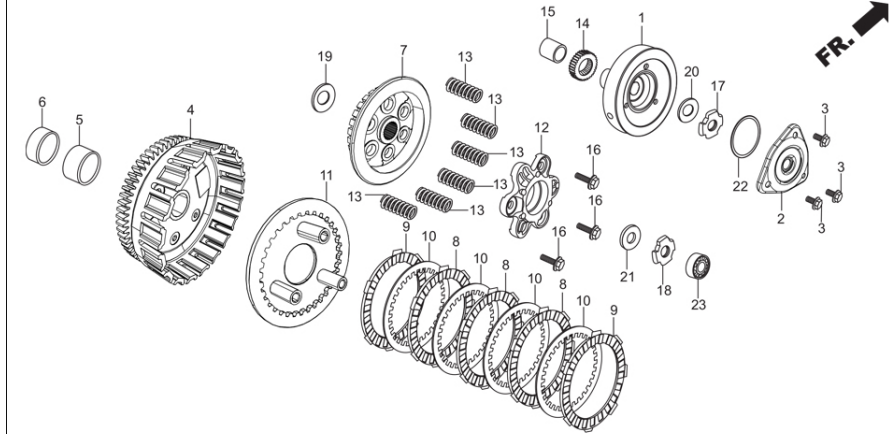


**E-5**  
RIGHT CRANK CASE COVER



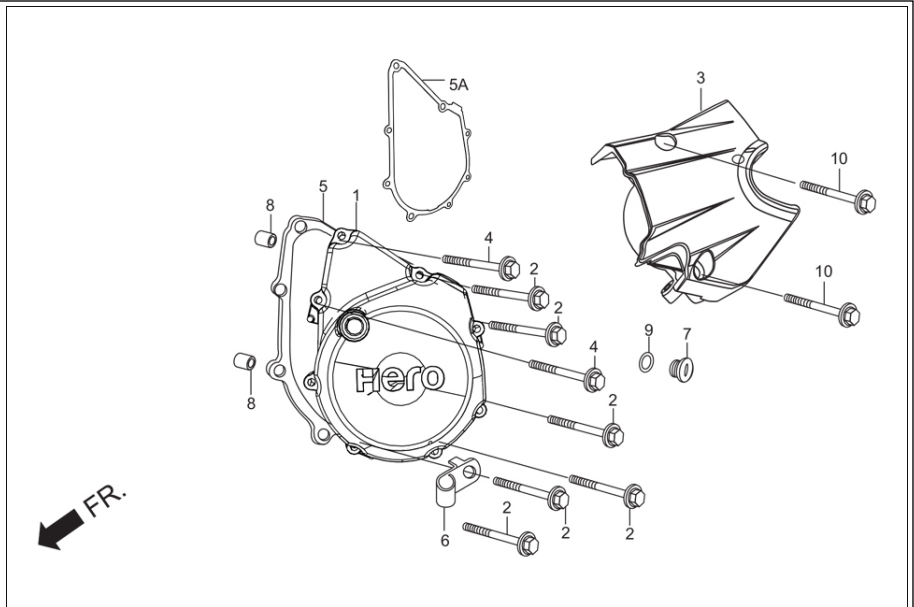
<b>Service Item</b>	<b>F.R.T.</b>	<b>Group Number: E-5 Model :: ECO 125 (Feb, 2020)</b>			
* COVER COMP, 'R' CRANK CASE	0.8	<b>Ref No.</b>	<b>Part Number</b>	<b>Description</b>	<b>Req.</b>
* GASKET, 'R' CRANK CASE COVER ...	0.6	1	11133-KPH-900	OIL JET 0.8 MM	1
* LEVER COMP, CLUTCH	0.7	2	11330-AAG-400	COVER COMP R CRANK CASE	1
(INC RELATIVE PART)	--	3	11394-KPH-901	GASKET, R CRANK CASE COVER	1
* OIL SEAL 16X28X7	--	4	15611-KTC-900	CAP, OIL FILTER	1
		5	15661-KTC-900	FINDER, OIL LEVEL	1
		6	22810-KTC-900	LEVER COMP., CLUTCH	1
		7	22815-166-000	SPRING, CLUTCH LEVER	1
		8	22821-KTC-940	RECIEVER, CLUTCH CABLE	1
		9	22847-KCC-900	ROD, CLUTCH LIFTER	1
		10	90463-KRM-840	WASHER SEALING 6.2 MM	1
		11	90702-GB6-910	PIN, DOWEL,8 X 12	2
		12	91007-KPH-901	BRG., BALL RADIAL 6001 U SPL	1
		13	91204-MC7-003	OIL SEAL, 16 X 28 X 7	1
		14	91307-035-000	O-RING,18 X 3	1
		15	91303-719-000	O-RING,9 MM	1
		16	95701-06012-00	BOLT, FLANGE, 6X12	1
		17	96001-06040-00	BOLT, FLANGE, SH. 6 X 40	10
		18	15441-KTC-900A	BOLT, FLANGE 6 X 14 (PRE COATING)	2

**E-6**  
CLUTCH



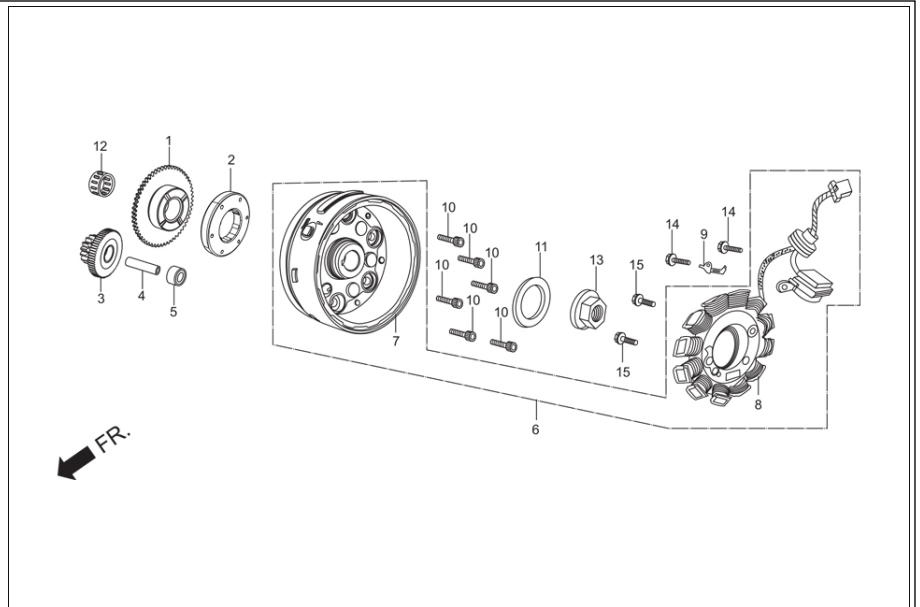
Service Item	F.R.T.	Group Number: E-6 Model :: ECO 125 (Feb, 2020)			
		Ref No.	Part Number	Description	Req.
		1	15431-KTC-901	ROTOR, OIL FILTER	1
		2	15441-KTC-900	COVER, OIL FILTER	1
		3	15441-KTC-900A	BOLT, FLANGE 6 X 14 (PRE COATING)	3
		4	22100-AAG-501	OUTER COMP CLUTCH	1
		5	22115-KPG-T00	GUIDE, CLUTCH OUTER	1
		6	22116-KPG-T00	COLLAR, CLUTCH OUTER	1
		7	22121-AAG-501	CENTER CLUTCH	1
		8	22205-AAG-501	DISK B CLUTCH FRICTION	3
		9	22201-AAG-501	DISK A CLUTCH FRICTION	2
		10	22321-AAG-501	PLATE, CLUTCH	4
		11	22350-AAG-501	PLATE CLUTCH PRESSURE	1
		12	22361-AAG-501	PLATE CLUTCH LIFTER	1
		13	22401-AAG-501	SPRING CLUTCH	6
		14	23123-KGH-900	GEAR C, PRIMARY DRIVE (YELLOW)	1
		15	23125-KTC-901	COLLAR, PRIMARY DRIVE	1
		16	90050-KFL-850	SPECIAL BOLT FLANGE 6 X 25	3
		17	90231-087-010	NUT, LOCK, 14 MM	1
		18	90231-KM7-700	NUT, LOCK, 14 MM	1
		19	90403-AAG-501	WASHER THRUST	1
		20	90432-086-000	WASHER `B LOCK	1
		21	90501-GBL-730	WASHER ,14 MM	1
		22	91301-KTC-900	O-RING 49.5 X 1.7	1
		23	96100-62000-00	BRG.BALL RADIAL	1

**E-7**  
LEFT CRANK CASE COVER



Service Item	F.R.T.	Group Number: E-7 Model :: ECO 125 (Feb, 2020)		
Ref No.	Part Number	Description	Req.	
1	11341-AAG-400	COVER, LEFT CRANK CASE	1	
2	96001-06035-00	BOLT, FLANGE, SH. 6 X 35	6	
3	11360-KTR-H00	COVER COM L REAR	1	
4	96001-06028-00	BOLT, FLANGE, SH. 6X28	2	
5	11395-KPH-901	GASKET, L CRANK CASE COVER	1	
5A	11395-AAG-101	GASKET L CRANK CASE COVER	1	
6	16236-KTC-900	CLAMPER, OVER FLOW TUBE	1	
7	90084-KTC-A20	CAP, 14 MM	1	
8	90702-GB6-910	PIN, DOWEL, 8 X 12	2	
9	91303-377-000	O-RING, 13.8 X 2.5	1	
10	96001-06025-00	BOLT, FLANGE, SH. 6 X 25	2	

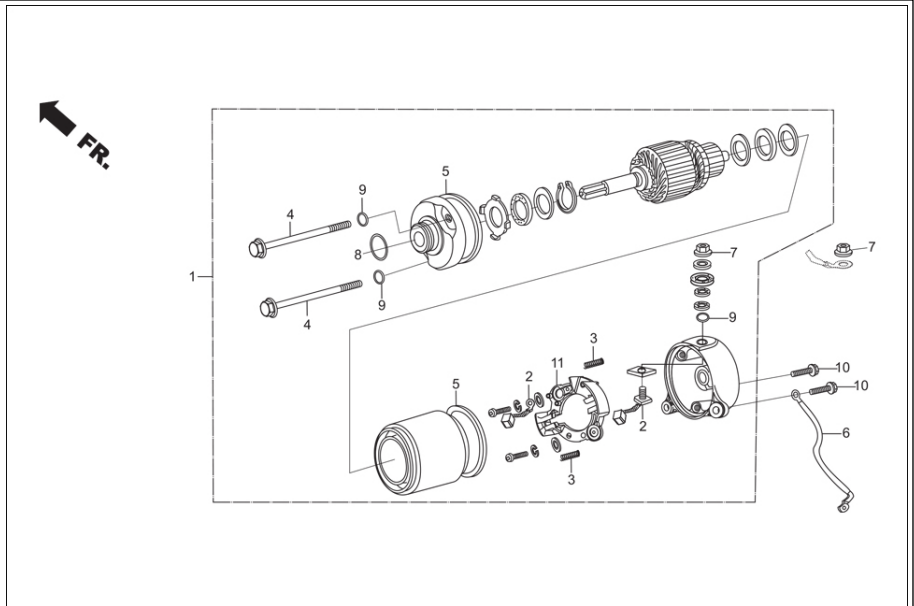
**E-7A**  
A.C.GEN. ASSY. / STARTING CLUTCH



Service Item	F.R.T.	Group Number: E-7A Model :: ECO 125 (Feb, 2020)			
		Ref No.	Part Number	Description	Req.
		1	28110-KTC-921	GEAR COMP., STARTER DRIVEN	1
		2	28120-KTR-A00A	ASSY. ONEWAY CLUTCH	1
		3	28131-KTC-920	GEAR, STARTER REDUCTION (17T)	1
		4	28132-KPH-900	SHAFT, REDUCTION GEAR	1
		5	28133-KPH-900	COLLAR, STARTER REDUCTION	1
		6	31100-AAN-201	AC GENERATOR ASSY.	1
		7	31110-AAN-201	FLYWHEEL COMP.	1
		8	31120-KTR-A01	STATOR COMP.,	1
		9	32961-KPH-900	CLAMPER, ACG CORD	1
		10	90085-KTC-920	BOLT, SOCKET, 6 X 14	6
		11	90439-SB2-010	WASHER, 24 X 12 X 2.3	1
		12	91071-KTC-900	BEARING NEEDLE, 21 X 25 X 18	1
		13	94050-12000	NUT, FLANGE, 12 MM	1
		14	96001-06016-00	BOLT, FLANGE SH. 6 X 16	2
		15	96001-06022-00	BOLT, FLANGE, SH. 6 X 22	2



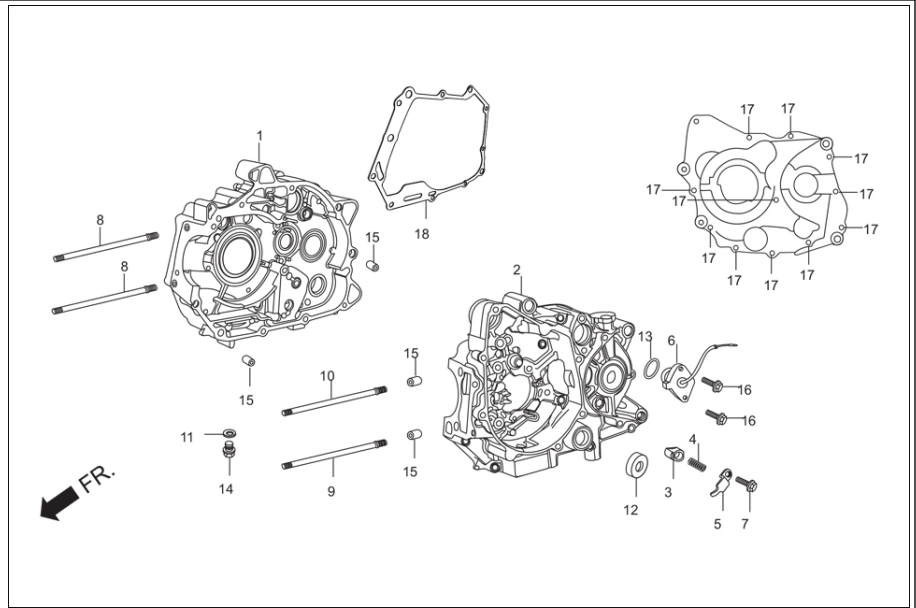
# E-7B STARTER MOTOR



Service Item	F.R.T.	Group Number: E-7B Model :: ECO 125 (Feb, 2020)			
		Ref No.	Part Number	Description	Req.
		1	31200-KTC-921	MOTOR ASSY., STARTER	1
		2	31201-KPT-A01	BRUSH, TERMINAL SET	1
		3	31204-KG8-004	BRUSH, SPRING	2
		4	31205-KTC-921	BOLT, SET	2
		5	31207-MBE-008	RING	2
		6	32601-KTR-A00	CABLE, BATTERY EARTH	1
		7	90071-MB0-000	NUT, WASHER, 6 MM	2
		8	91309-425-003	O RING 24.4X3.1	1
		9	91320-MB0-000	O RING	3
		10	95701-06025-00	BOLT, FLANGE, 6X 25	2
		11	31206-KPH-881	BRUSH, HOLDER SET	1

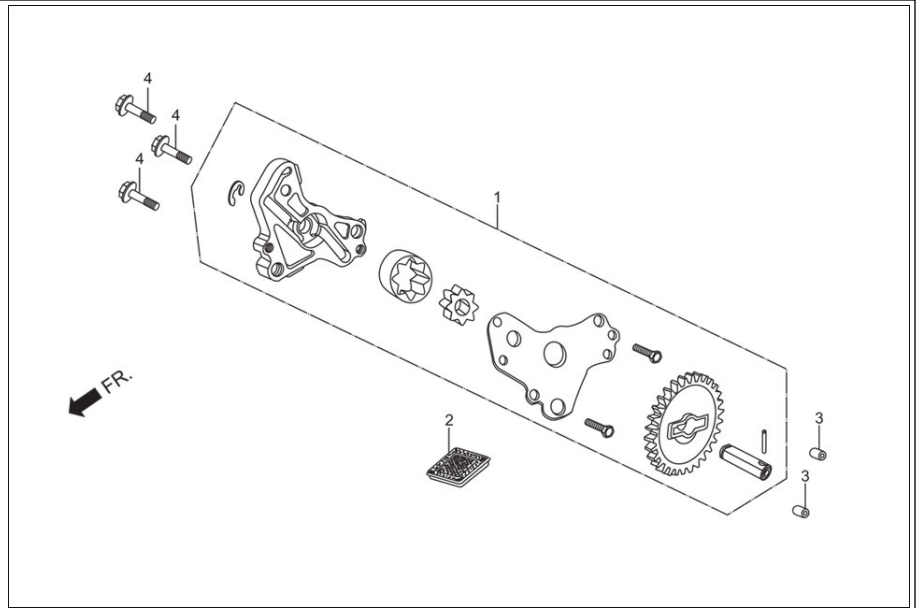
# E-8

## CRANK CASE



Service Item	F.R.T.	Group Number: E-8 Model :: ECO 125 (Feb, 2020)			
		Ref No.	Part Number	Description	Req.
		1	11100-AAG-400	CRANK CASE COMP. RIGHT	1
		2	11200-KTR-H90	CRANK CASE COMP. LEFT	1
		3	11215-KTC-901	PLUG, BRG. PUSH	1
		4	11216-KTC-901	SPRING, BRG. PUSH	1
		5	11217-KTC-901	PLATE, BRG. PUSH	1
		6	35759-KTR-A01	CONTACT ASSY., CHANGE SWITCH	1
		7	90001-KTC-900	BOLT, FLANGE, SH. 6 X 16	1
		8	90031-KTC-900	BOLT STUD, CYL	2
		9	90032-KTC-900	BOLT STUD, CYL	1
		10	90033-KTC-900	BOLT STUD, CYL	1
		11	90407-259-000	DRAIN COCK PACKING	1
		12	91208-KPH-901	OIL SEAL, 11.6 X 24 X 10	1
		13	91305-KPH-900	O-RING,19.4 X 2.3	1
		14	92800-12000-00	DRAIN PLUG BOLT	1
		15	94301-10120	DOWEL PIN, 10X12	4
		16	95701-06016-00	BOLT, FLANGE, 6X16	2
		17	96001-06060-00	BOLT, FLANGE, SH. 6 X 60	11
		18	11394-AAG-101	GASKET R CRANK CASE COVER	1

## E-8A OIL PUMP

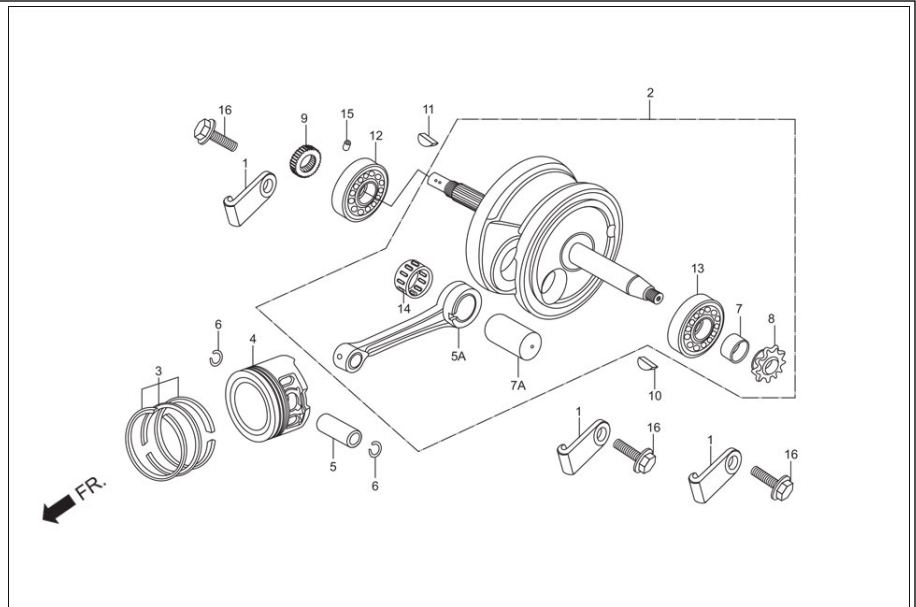


Service Item	F.R.T.
* PUMP ASSY., OIL	--
* SCREEN, OIL FILTER	--

**Group Number:** E-8A Model :: ECO 125 (Feb, 2020)

Ref No.	Part Number	Description	Req.
1	15100-KTC-900	OIL PUMP ASSY.	1
2	15421-035-010	SCREEN, OIL FILTER	1
3	90702-GB6-910	PIN, DOWEL,8 X 12	2
4	95701-06035-00	BOLT, FLANGE, 6X35	3

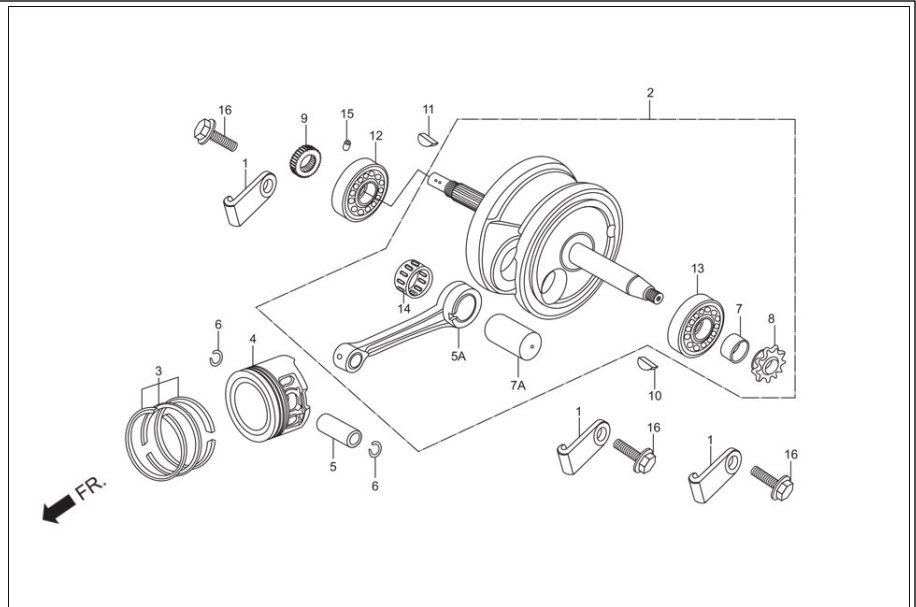
**E-9**  
CRANK SHAFT/PISTON



Service Item	F.R.T.
* CRANK SHAFT COMP,	4.0
* RING SET, PISTON	1.3
* PISTON	--
* PIN, PISTON	1.2
* ROD, CONNECTING (ACTUAL TIME)	--
* BEARING BALL RADIAL 6203	4.2
(ADD 02 FOR EACH)	--

Group Number: E-9 Model :: ECO 125 (Feb, 2020)				
Ref No.	Part Number	Description	Req.	
1	11208-KTC-900	PLATE, BEARING SET	3	
2	13000-AAG-100	CRANK SHAFT COMP	1	
3	13011-KTC-305	RING SET, PISTON (STD)	1	
	13021-KTC-305	RING SET, PISTON (O.S 0.25)	1	
	13031-KTC-305	RING SET, PISTON (O.S 0.50)	1	
	13041-KTC-305	RING SET, PISTON (O.S 0.75)	1	
	13051-KTC-305	RING SET, PISTON (O.S 1.00)	1	
4	13101-KTC-900	PISTON	1	
	13102-KTC-305	PISTON (O.S. 0.25)	1	
	13103-KTC-305	PISTON (O.S. 0.50)	1	
	13104-KTC-305	PISTON (O.S. 0.75)	1	
	13105-KTC-305	PISTON (O.S. 1.00)	1	
5	13111-087-000	PIN, PISTON	1	
5A	13201-KFL-850	ROD, CONNECTING	1	
6	13115-001-000	CLIP, PISTON PIN	2	
7	13322-KTC-900	COLLAR, CRANK SHAFT LEFT	1	
7A	13381-KPH-900	PIN, CRANK	1	
8	14311-KPH-900	SPROCKET, TIMING	1	
9	15341-KTC-900	GEAR, OIL PUMP DRIVE, (19T)	1	
10	90741-KFB-000	KEY,WOODRUFF,4 MM	1	
11	90741-KGH-900	KEY, WOODRUFF, 4 MM	1	
12	91001-KTC-900	BRG. ROLLER, 22 X 58 X 17	1	
13	91002-KTC-901	BRG. BALL RADIAL, 63/22 SPL	1	
14	91101-AAC-H40	BEARING, CONNECTING ROD(RED)	1	
	91102-AAC-H40	BEARING, CONNECTING ROD(BLUE)	1	
	91103-AAC-H40	BEARING, CONNECTING ROD(WHITE)	1	
15	94303-03050	DOWEL PIN 3 X 5	1	
16	95701-06016-00	BOLT, FLANGE, 6X16	3	

**E-9**  
CRANK SHAFT/PISTON



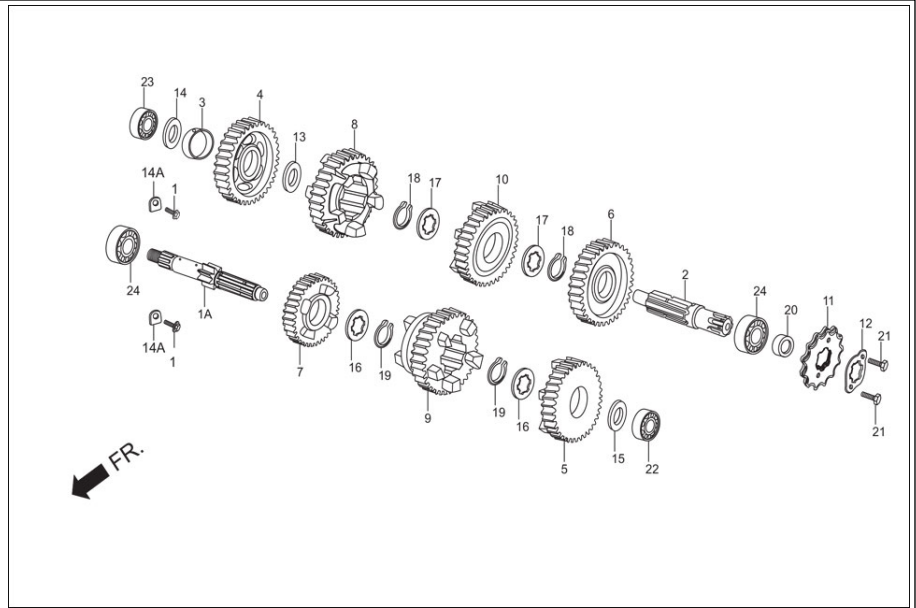


Service Item	F.R.T.
* CRANK SHAFT COMP,	4.0
* RING SET, PISTON	1.3
* PISTON	--
* PIN, PISTON	1.2
* ROD, CONNECTING (ACTUAL TIME)	--
* BEARING BALL RADIAL 6203	4.2
(ADD 02 FOR EACH)	--

Group Number: E-9 Model :: ECO 125 (Feb, 2020)

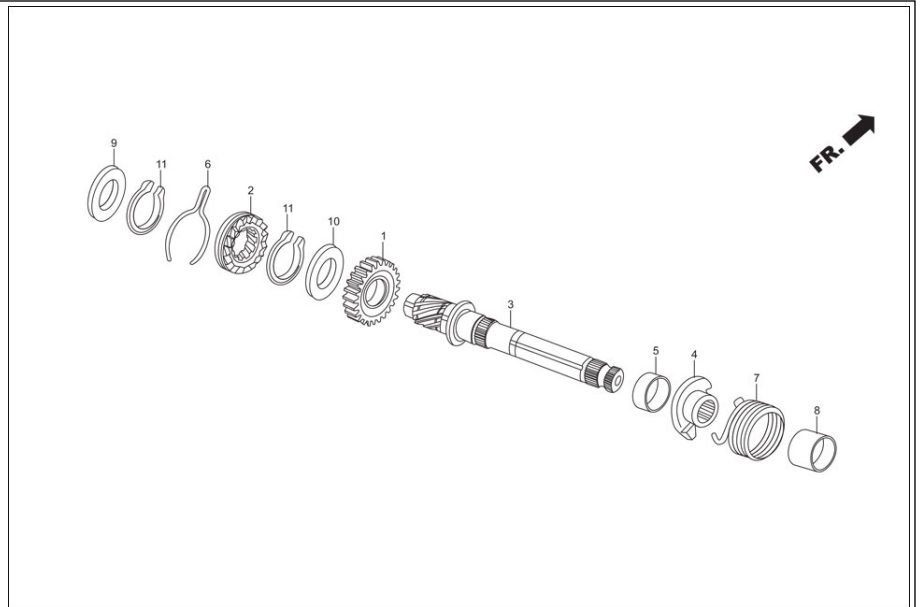
SELECTION TABLE OF CONNECTING ROD BIG END BEARING						
Connecting rod code	Crank Pin CODE (Color)	1	2	3	4	5
		(Green)	(Yellow)	(White)	(Blue)	(Brown)
B	91101-GF6-000 (Red)					
A	91102-GF6-000 (Blue)					
C		91101-GF6-000 (Red)				
A		91102-GF6-000 (Blue)				
D			91101-GF6-000 (Red)			
B			91102-GF6-000 (Blue)			
A			91103-GF6-000 (White)			
E				91101-GF6-000 (Red)		
C				91102-GF6-000 (Blue)		
A				91103-GF6-000 (White)		
F					91101-GF6-000 (Red)	
D					91102-GF6-000 (Blue)	
B					91103-GF6-000 (White)	

# E-10 TRANSMISSION



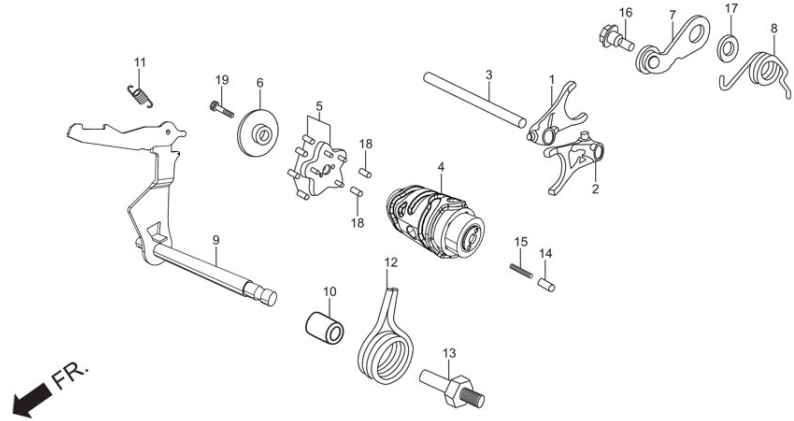
<b>Service Item</b>	<b>F.R.T.</b>	<b>Group Number: E-10 Model :: ECO 125 (Feb, 2020)</b>			
		<b>Ref No.</b>	<b>Part Number</b>	<b>Description</b>	<b>Req.</b>
* MAIN SHAFT (INC. RELATIVE PART)	*4.0 --	1	15441-KTC-900A	BOLT, FLANGE 6 X 14 (PRE COATING)	2
* COUNTER SHAFT (INC. RELATIVE PART)	--	1A	23211-KTR-940	SHAFT, MAIN, 13T	1
(WHEN SERVICING COMP., UNIT)	--	2	23221-KTR-940	SHAFT, COUNTER	1
* SPROCKET, DRIVE	0.2	3	23415-KPH-900	BUSH, 15 MM	1
		4	23421-KTC-900	GEAR, C-1 36T	1
		5	23431-KPH-900	GEAR M-2 20T	1
		6	23441-KTC-901	GEAR, C-2 30T	1
		7	23451-KTC-901	GEAR, M3 21T	1
		8	23461-KTC-901	GEAR, C-3 23T	1
		9	23471-KTC-902	GEAR, M-4 23T	1
		10	23481-KTC-902	GEAR, C-2 21T	1
		11	23801-GF6-000	SPROCKET, DRIVE (14T)	1
		12	23802-GN5-910	PLATE FIXING	1
		13	90412-187-000	WASHER THRUST	1
		14	90412-KPH-900	WASHER SPL., 12 X 23	1
		14A	90441-KA4-700	PLATE, BRG. HOLD	2
		15	90452-KGH-900	WASHER SPL. 12 MM	1
		16	90461-KTC-900	WASHER, SPLINE 17 MM	2
		17	90461-GB4-770	WASHER, SPLINE, 20 X 1.2	2
		18	90601-AAB-A00	CIRCLIP 17 MM	2
		19	90605-200-000	SET RING, 20MM	2
		20	91204-KPH-901	OIL SEAL, 17 X 30 X 5	1
		21	92101-06010-0A	BOLT, HEX., 6 X 10	2
		22	96100-60010-00	BEARING , RADIAL BALL , 6001	1
		23	96100-62010-00	BEARING, RADIAL BALL, 6201	1
		24	96100-62030-00	BEARING, RADIAL BALL, 6203	2

**E-11**  
KICK STARTER



<b>Service Item</b>	<b>F.R.T.</b>	<b>Group Number: E-11 Model :: ECO 125 (Feb, 2020)</b>			
* PINION, KICK STARTER	*3.7	<b>Ref No.</b>	<b>Part Number</b>	<b>Description</b>	<b>Req.</b>
* SPINDLE, KICK STARTER (INC. RELATIVE PART)	--	1	28211-KTC-900	PINION, KICK STARTER	1
* SPRING, KICK STARTER (INC. RELATIVE PART)	1.1	2	28221-KTC-900	RATCHET, STARTER DRIVE	1
	--	3	28251-KTC-900	SPINDLE, KICK STARTER	1
	--	4	28262-KTC-900	RETAINER, KICK SPRING	1
	--	5	28265-KPH-900	COLLAR, KICK RETAINER	1
	--	6	28271-KPH-900	SPRING, FRICTION, STARTER PINION	1
	--	7	28281-KPH-900	SPRING, KICK RETURN	1
	--	8	28282-KPH-900	COLLAR, KICK SPRING	1
	--	9	90452-KPH-900	WASHER THRUST, 15.5 MM	1
	--	10	90454-KPH-900	WASHER, 25 X 20.2 X 1	1
	--	11	90605-200-000	SET RING, 20MM	2

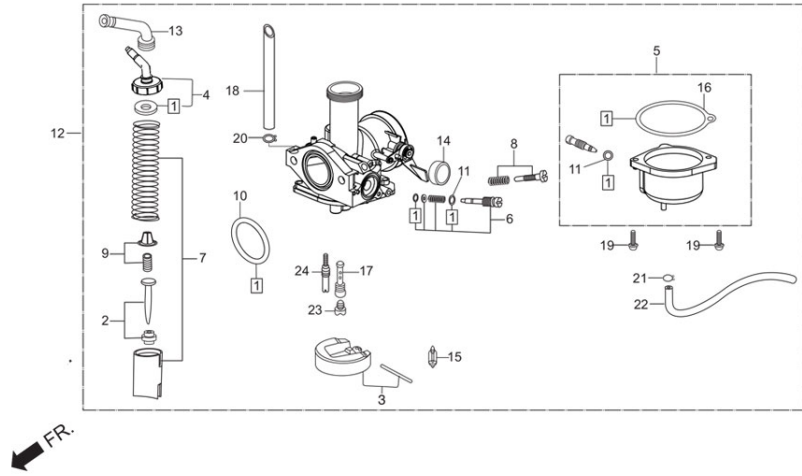
**E-12**  
GEAR SHIFT



<b>Service Item</b>	<b>F.R.T.</b>	<b>Group Number: E-12 Model :: ECO 125 (Feb, 2020)</b>			
		<b>Ref No.</b>	<b>Part Number</b>	<b>Description</b>	<b>Req.</b>
* FORK, GEAR SHIFT (ONE OR ALL)	*3.8 --	1	24211-KTC-900	FORK R GEAR SHIFT	1
* DRUM, GEAR SHIFT	--	2	24212-KTC-900	FORK, L GEAR SHIFT	1
* PLATE, SHIFT DRUM STOPPER	--	3	24241-KPH-900	SHAFT, GEAR SHIFT FORK	1
* ARM COMP., SHIFT DRUM STOPPER (INC. RELATIVE PART)	--	4	24301-AAN-C00	DRUM, GEAR SHIFT	1
* SPINDLE COMP., GEARSHIFT (INC. RELATIVE PART)	1.2 --	5	24410-KTC-900	PLATE COMP., SHIFT DRUM STOPPER	1
* CONTACT ASSY., NEUTRAL SWITCH	-- 0.2	6	24421-KTC-900	HOLDER, DRUM STOPPER	1
		7	24430-KPH-901	STOPR. COMP., GEAR SHIFT DRUM	1
		8	24435-KTC-900	SPRING, SHIFT DRUM STOPPER	1
		9	24610-AAN-C00	SPINDLE COMP., GEAR SHIFT	1
		10	24639-KPG-T00	COLLAR, 12.2 MM	1
		11	24641-KTC-900	SPRING, GEAR SHIFT ARM	1
		12	24651-KTC-900	SPRING, GEAR SHIFT, RETURN	1
		13	24652-KPH-900	PIN, SHIFT RETURN SPRING	1
		14	35751-KPH-900	CAP, CONTACT CHANGE SW.	1
		15	35752-KRM-840	SPRING, CONN. CHANGE SW.	1
		16	90022-MG8-000	PIVOT, SHIFT DRUM STOPR. ARM	1
		17	90435-HB3-000	WASHER, 6.1 MM	1
		18	96220-30085	ROLLER, 3 X 8.5	2
		19	96700-06018-00	SOCKET, BOLT, 6 X 18	1

# E-13

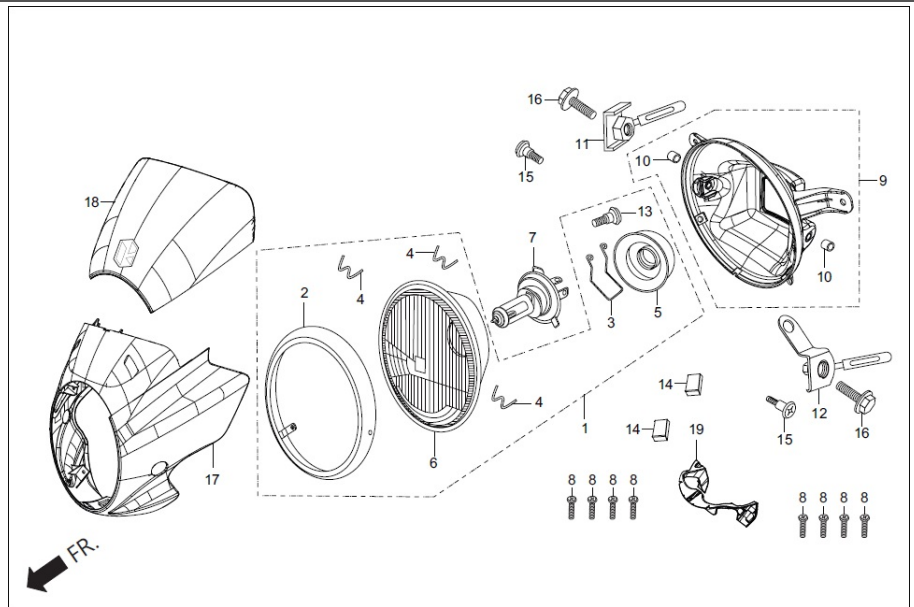
## CARBURETTOR





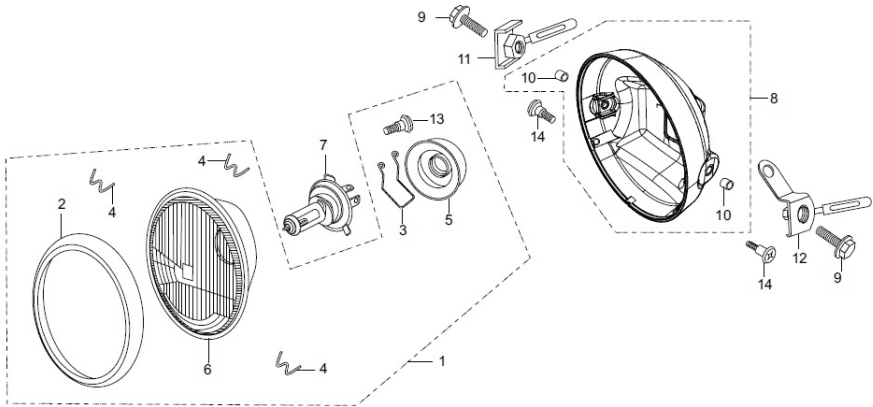
<b>Service Item</b>	<b>F.R.T.</b>	<b>Group Number: E-13 Model :: ECO 125 (Feb, 2020)</b>			
		<b>Ref No.</b>	<b>Part Number</b>	<b>Description</b>	<b>Req.</b>
* NEEDLE SET, JET	0.5	1	16010-KWS-901	GASKET SET	1
* CARBURETTOR ASSY	--	2	16012-KTC-A21	NEEDLE, SET JET	1
* FLOAT SET	0.4	3	16013-KRB-901	FLOAT, SET	1
* TOP SET	0.2	4	16014-KTR-A01	TOP SET	1
* CHAMBER SET, FLOAT	--	5	16015-KTR-A01	CHAMBER SET, FLOAT	1
* VALVE SET, THROTTLE	0.3	6	16016-KPH-651	SCREW SET	1
		7	16022-KTR-A01	VALVE SET, THROTTLE	1
		8	16028-KTT-901	SCREW SET	1
		9	16037-KPH-901	PLATE SET, VALVE	1
		10	16075-KTC-901	O-RING	1
		11	16076-KPL-901	O-RING	2
		12	16100-AAG-001	CARBURETTOR ASSY.	1
		13	16118-KTR-A01	CAP, CABLE SEALING	1
		14	16148-KPL-901	CAP,CHOKE LEVER DUST	1
		15	16155-KRS-861	VALVE COMP., FLOAT	1
		16	16163-KWS-901	GASKET, FLOAT CHAMBER	1
		17	16165-KTR-A01	HOLDER, NEEDLE JET	1
		18	16199-KCP-J01	TUBE,AIR VENT	1
		19	93892-04018-08L	SCREW, WASH. 4 X18	2
		20	95002-02089	CLIP, B1 8 TUBE	1
		21	95002-02659	CLIP, B-1, 6.5 TUBE	1
		22	95005-35310-50	TUBE, OVER FLOW	1
		23	99101-KTT-0980	JET MAIN #98	1
		24	99103-KTR-0350	JET, SLOW, # 35	1

**F-1-WITH-VISOR**  
LIGHT ASSY. HEAD (VISOR)



Service Item	F.R.T.	Group Number: F-1-WITH-VISOR Model :: ECO 125 (Feb, 2020)			
		Ref No.	Part Number	Description	Req.
		1	3310B-AAJ-H02	LIGHT ASSY., HEAD (W/O BULB)	1
		2	33101-KTN-921	RIM COMP., HEAD LIGHT	1
		3	33108-KRY-900	SPRING, SPC(BULB HOLDER)	1
		4	33108-KGA-900	SPRING, UNIT HOLDER	3
		5	33112-KTN-921	SOCKET COVER	1
		6	33120-AAJ-H02	UNIT, HEAD LIGHT	1
		7	34901-KSP-910	BULB, HEAD LIGHT	1
			34901-KSP-910	BULB, HEAD LIGHT	1
		8	93903-34380	SCREW, TAPPING, 4X12	8
		9	6130A-AAM-300	CASE, COMP., HEADLIGHT	1
		10	61302-471-000	COLLAR, HRAD LIGHT CASE	2
		11	61303-198-D00	NUT, R HEAD LIGHT CASE	1
		12	61304-KST-940	NUT, L HEAD LIGHT CASE	1
		13	93901-04012-00	SCREW, TAPPING SPL., 4 X 12	1
		14	90810-KCC-910	RUBBER, STOPPER	2
		15	91508-KST-940	SCREW, PAN, 5 X 14	2
		16	95701-08020-02	BOLT, FLANGE, 8 X 20	2
		17	61301-AAG-400R	COWL FRONT (BLACK)	1
			61301-AAM-300S	COWL FRONT(CBR R-195C)	1
			61301-AAG-400U	COWL FRONT (VIBRANT BLUE M)	1
		18	64100-AAG-C00R	SET, WIND SCREEN	1
		19	83402-AAG-430	PANEL INNER	1

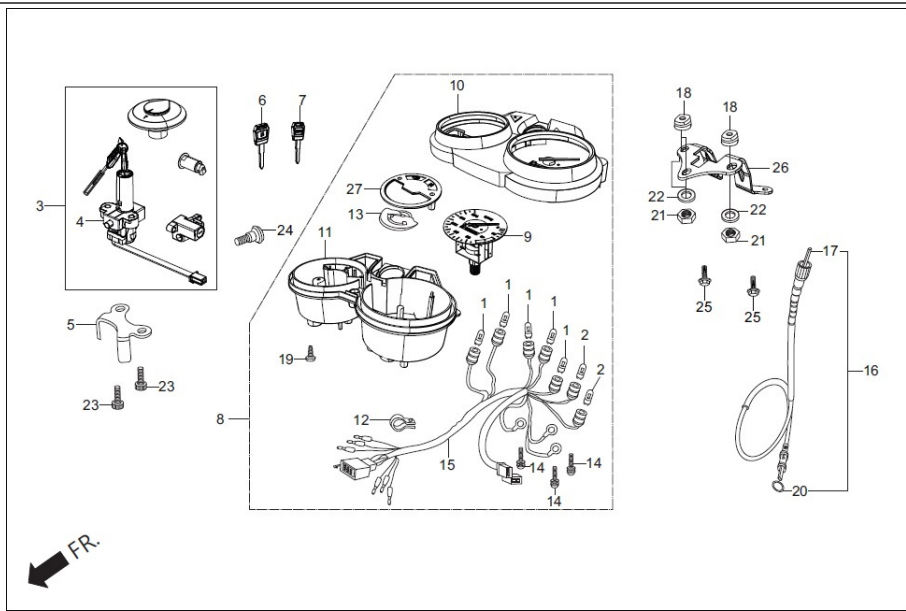
**F-1A-WO-VISOR**  
LIGHT ASSY. HEAD (W/O VISOR)



Service Item	F.R.T.	Group Number: F-1A-WO-VISOR Model :: ECO 125 (Feb, 2020)			
		Ref No.	Part Number	Description	Req.
		1	3310B-AAJ-H02	LIGHT ASSY., HEAD (W/O BULB)	1
		2	33101-KTN-921	RIM COMP., HEAD LIGHT	1
		3	33108-KRY-900	SPRING, SPC(BULB HOLDER)	1
		4	33108-KGA-900	SPRING, UNIT HOLDER	3
		5	33112-KTN-921	SOCKET COVER	1
		6	33120-AAJ-H02	UNIT, HEAD LIGHT	1
		7	34901-KSP-910	BULB, HEAD LIGHT	1
			34901-KSP-910	BULB, HEAD LIGHT	1
		8	6130A-KST-940	CASE, COMP., HEADLIGHT	1
		9	95701-08020-02	BOLT, FLANGE, 8 X 20	2
		10	61302-471-000	COLLAR, HRAD LIGHT CASE	2
		11	61303-198-D00	NUT, R HEAD LIGHT CASE	1
		12	61304-KST-940	NUT, L HEAD LIGHT CASE	1
		13	93901-04012-00	SCREW, TAPPING SPL., 4 X 12	1
		14	91508-KST-940	SCREW, PAN, 5 X 14	2

**F-2**  
SPEEDOMETER/CABLE/KEY SET

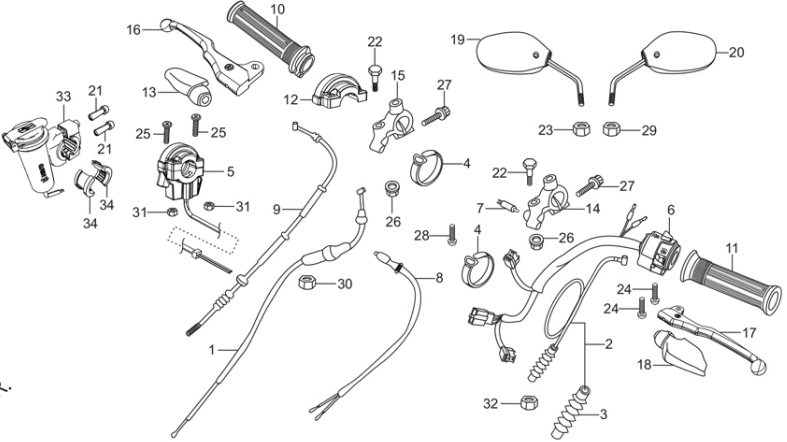
← FR.



Service Item	F.R.T.	Group Number: F-2 Model :: ECO 125 (Feb, 2020)		
Ref No.	Part Number	Description	Req.	
1	34908-KVE-900	BULB, WEDGE BASE T10 (12V - 1.7 W)	5	
2	34909-KVE-900	BULB, WEDGE BASE (12V - 3 W)	2	
3	35010-AAG-C00	KEY SET	1	
4	35100-AAG-001	SW. ASSY. COMB. & LOCK	1	
5	35106-KTC-900	COVER, COMB. SWITCH	1	
6	35121-AAC-H30	KEY BLANK NO 1	1	
7	35122-AAC-H30	KEY BLANK NO 2	1	
8	37100-AAG-C00	METER ASSY, COMB	1	
9	37210-KST-A20	SPEEDOMETER COMP.	1	
10	37610-KST-951	CASE UPPER ASSY	1	
11	37612-KCC-900	CASE, UNDER ASSY.	1	
	37614-KCC-900	COVER, UNDER CASE	1	
12	37215-MB6-830	CLAMP	1	
13	37300-AAG-401	FUEL METER COMP.,	1	
14	90108-GN2-000	SCREW, WASH., 3 X 10	3	
15	37619-KST-951	SOCKET COMP.	1	
16	44830-AAJ-000	CABLE COMP. SPEEDOMETER	1	
17	44831-KST-940	CABLE, INNER	1	
18	80101-443-000	RUBBER, RR. FENDER CUSHION	3	
19	90032-KST-950	SCREW, TAPPING, 4 X 14	1	
20	91352-GAZ-930	O-RING 8.5X11.5	1	
21	94001-06070-0S	NUT, HEX., 6 MM	3	
22	94103-06700	WASHER, PLAIN, 6 MM	3	
23	96600-08025-00	SOCKET, BOLT, 8 X 25	2	
24	90035-KST-900	SCREW, WASH, 4 X 8	1	
25	96001-06018-07	BOLT FLANGE SH 6X18	2	
26	61311-AAG-400	STAY METER SET	1	
27	37350-AAG-C00	DIAL DESIGN PILOT COMP	1	

**F-3**  
HANDLE LEVER/SWITCH/ CONTROL  
CABLE

FR. ←

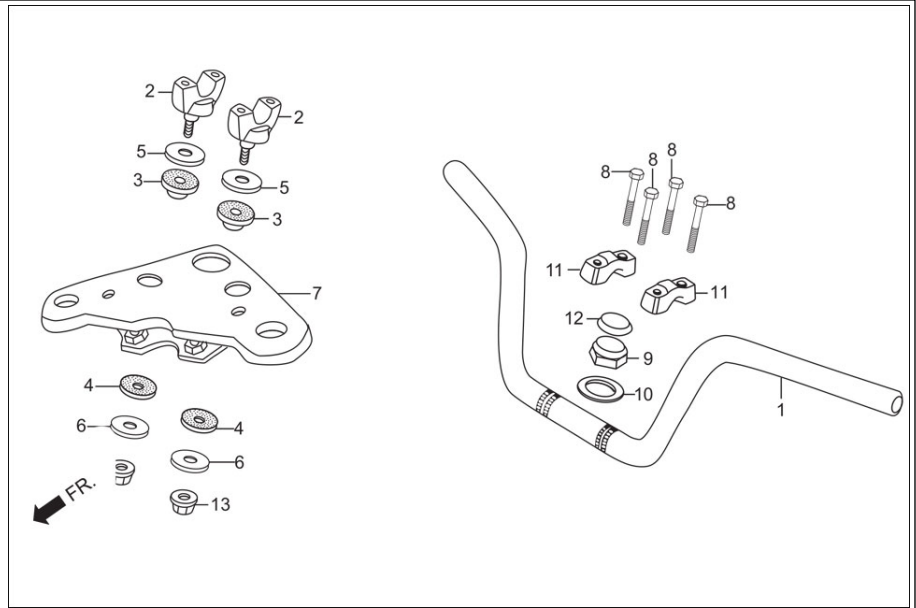




Service Item	F.R.T.	Group Number: F-3 Model :: ECO 125 (Feb, 2020)		
Ref No.	Part Number	Description	Req.	
1	17910-KTR-A00	CABLE COMP, THROTTLE	1	
2	22870-KTC-A00	CABLE COMP., CLUTCH	1	
3	22871-116-670	BOOT, CLUTCH CABLE	1	
4	32161-404-000	BAND B-1,WIRE	2	
5	35150-AAG-H20	SW ASSY START	1	
6	35200-KST-870	SWITCH ASSY., WINKER	1	
7	35330-413-003	SW. COMP., FR. LEVER	1	
8	35340-KTC-A21	SWITCH ASSY., FR. STOP	1	
9	45450-KTR-A20	CABLE COMP., FR. BRAKE	1	
10	53140-KTC-900	GRIP COMP. , R HANDLE	1	
11	53166-KTC-900	GRIP L HANDLE	1	
12	53168-166-000	HOUSING UPPER, THROTTLE	1	
13	53171-KCC-900	COVER R HANDLE LEVER	1	
14	53172-KTC-920	BRACKET, L HANDLE LEVER	1	
15	53173-AAH-000	BRACKET R. HANDLE LEVER	1	
16	53175-AAF-H00	LEVER COMP.R STRG.HNDL.	1	
17	53178-AAF-H00	LEVER COMP.L STRG.HNDL.	1	
18	53179-KTC-900	COVER L HANDLE LEVER	1	
19	88110-AAJ-500	MIRROR ASSY., R. BACK	1	
20	88120-AAJ-500	MIRROR ASSY., L. BACK	1	
21	96700-05035-10	BOLT SOCKET 5X35	2	
22	90114-310-000	BOLT, HANDLE LEVER PIVOT	1	
23	90201-KST-900	NUT HEX., 10MM	1	
24	93500-05020-0G	SCREW, PAN, 5 X 20	2	
25	93500-05022-1G	SCREW, PAN, 5 X 22	2	
26	94050-06000	NUT, FLANGE, 6 MM	2	
27	96001-06025-07	BOLT, FLANGE, SH. 6 X 25	2	
28	93901-32220	SCREW TAPPING 3X10	1	

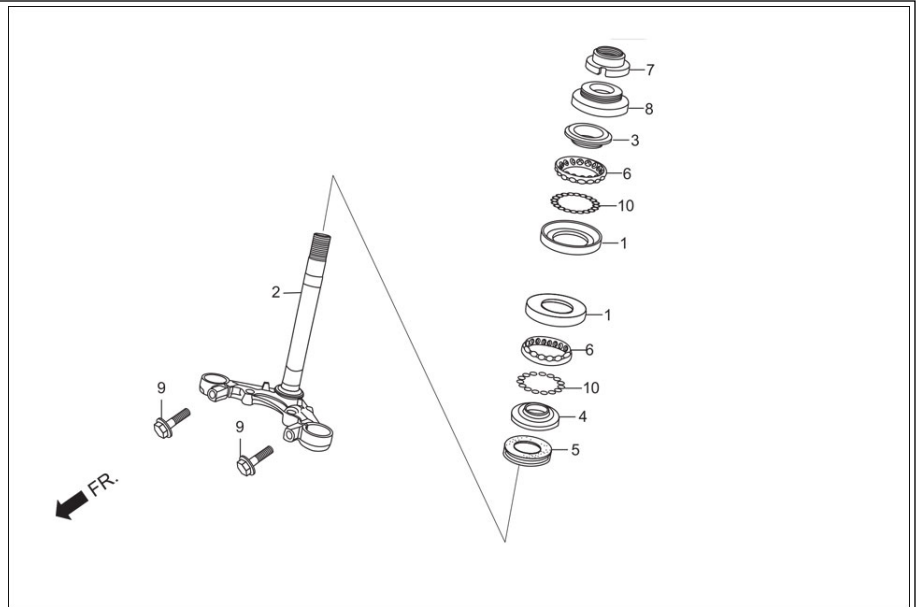
29	94001-10070-0S	NUT, HEX., 10 MM	1
30	94002-10070-0S	NUT, HEX., 10MM	1
31	94001-05070-0S	NUT HEX. 5MM	2
32	94002-08000-0S	NUT HEX.8 MM	1
33	31304-AAG-C30	USB CHARGER	1
34	31306-AAE-111	RUBBER GRIP	2

**F-4**  
HANDLE PIPE/TOP BRIDGE



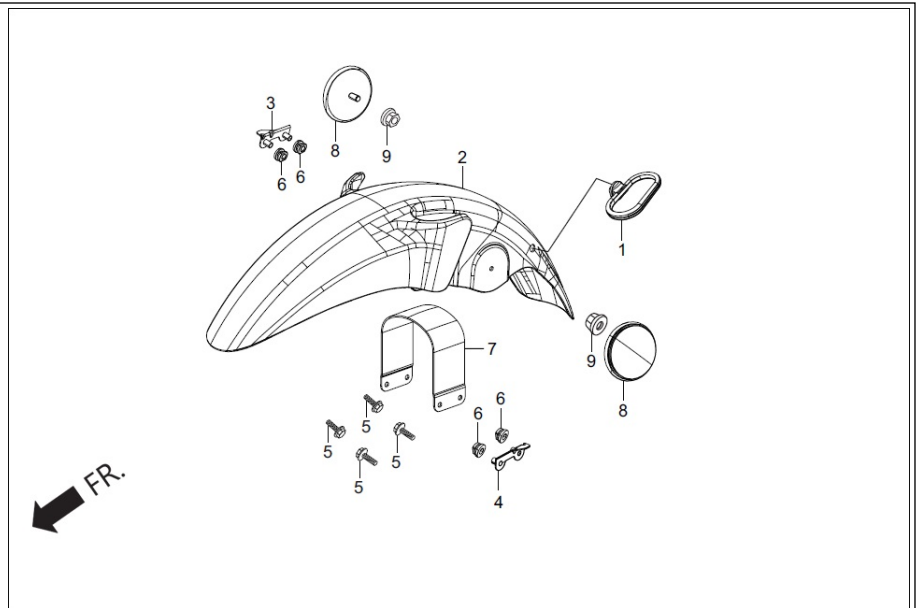
<b>Service Item</b>	<b>F.R.T.</b>	<b>Group Number: F-4 Model :: ECO 125 (Feb, 2020)</b>			
* PIPE, STEERING HANDLE	0.5	<b>Ref No.</b>	<b>Part Number</b>	<b>Description</b>	<b>Req.</b>
* BRIDGE COMP, FORK TOP	--	1	53100-KTC-900	PIPE, STEERING HANDLE	1
*HOLDER, HANDLE PIPE UNDER	0.2	2	53132-124-000	HOLDER, HANDLE PIPE UNDER	2
(ADD 01 FOR EACH)	--	3	53133-198-900	RUBBER, HANDLE CUSHION UPPER	2
		4	53134-028-000	RUBBER, HANDLE CUSHION UNDER	2
		5	53135-198-900	WASHER, HANDLE CUSHION	2
		6	53136-198-900	PLATE, HANDLE CUSHION	2
		7	53230-KTR-940	BRIDGE COMP., FORK TOP	1
		8	90117-065-000	BOLT,HEX., 6X28	4
		9	90304-AAH-000	NUT STRG. STEM	1
		10	90503-KTR-900	WASHER, STEERING STEM	1
		11	95014-21101	HOLDER A1, HANDLE PIPE UPPER	2
		12	53208-AAH-000	CAP STRG. STEM	1
		13	90304-GA6-000	NYLOCK, NUT, 10MM	2

**F-5**  
STEERING STEM



<b>Service Item</b>	<b>F.R.T.</b>	<b>Group Number: F-5 Model :: ECO 125 (Feb, 2020)</b>			
		<b>Ref No.</b>	<b>Part Number</b>	<b>Description</b>	<b>Req.</b>
* RACE, STEERING BALL (ONE OR ALL)	0.8 --	1	50301-KTR-900	RACE, STEERING BALL	2
* STEM COMP., STEERING	0.9	2	53200-KTC-A20	STEM, COMP., STEERING	1
* RACE, STEERING TOP CONE	0.5	3	53211-268-010	RACE, STEERING TOP CONE	1
* THREAD, STEERING HEAD TOP	--	4	53212-200-000	RACE, STEERING BOTTOM CONE	1
		5	53214-200-000	DUST SEAL, STEERING HEAD	1
		6	53215-KTR-900	BALL, ASSY. STEERING	2
		7	53221-KTR-900	THREAD, STEERING HEAD TOP	1
		8	53222-KTR-900	MUD GUARD, STEERING HEAD TOP	1
		9	95701-08040-00	BOLT, FLANGE, 8 X 40	2
		10	96211-08000	BALL STEEL 8 MM	16

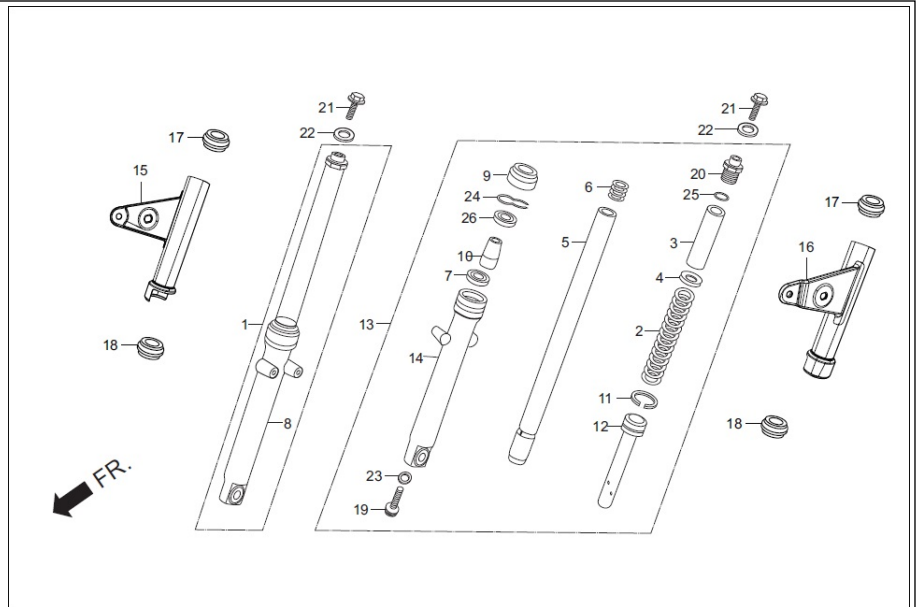
**F-6**  
FRONT FENDER



Service Item	F.R.T.	Group Number: F-6 Model :: ECO 125 (Feb, 2020)			
		Ref No.	Part Number	Description	Req.
		1	45451-KCC-900	GUIDE, FR. FENDER CABLE	1
		2	61100-AAG-300	FENDER FRONT	1
		3	61103-KTR-940	BRKT. FR. FENDER R	1
		4	61104-KTR-940	BRKT. FR. FENDER L	1
		5	95701-06020-00	BOLT, FLANGE, 6X20	4
		6	61105-KTC-900	RUBBER, FRONT FENDER MOUNTING	4
		7	61102-KTC-900	STAY, FRONT FENDER	1
		8	33741-AAG-B01	REFLEX REFLECTOR	2
			33741-KRY-861	REFLEX, REFLECTOR	2
		9	90302-KTE-911	NUT FLANGE PT 6MM	2

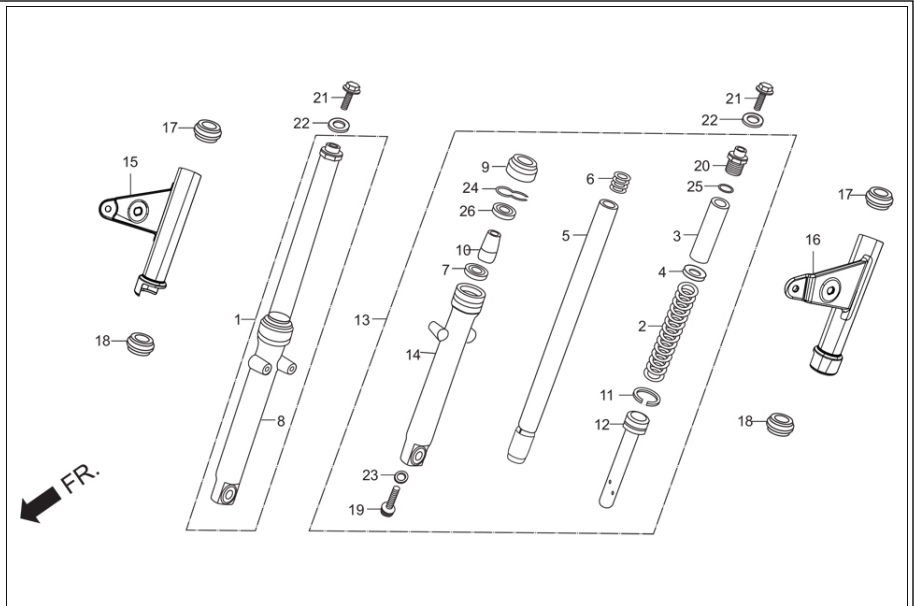


**F-7-WITH-VISOR**  
FRONT FORK (VISOR)



Service Item	F.R.T.	Group Number: F-7-WITH-VISOR Model :: ECO 125 (Feb, 2020)			
		Ref No.	Part Number	Description	Req.
		1	51400-KWA-941	FORK ASSY., R FRONT	1
		2	51401-KST-941	SPRING, FR. CUSHION	2
		3	51403-KCC-900	COLLAR, SPRING	2
		4	51403-447-730	JOINT, SPRING	2
		5	51410-KWA-941	PIPE COMP. FR. FORK	2
		6	51412-KAG-900	SPRING, REBOUND	2
		7	51412-KWA-941	RING BACKUP	2
		8	51420-KWA-941	CASE COMP. R, FRONT BOTTOM	1
		9	51425-KST-901	SEAL, DUST	2
		10	51432-KST-901	PIECE, OIL LOCK	2
		11	51437-KVN-901	RING, PISTON	2
		12	51440-KTR-901	PIPE, SEAT	2
		13	51500-KWA-941	FORK ASSY., L FRONT	1
		14	51520-KWA-941	CASE COMP. L, FRONT BOTTOM	1
		15	51602-AAG-400	COVER COMP R FR FORK UPP	1
		16	51606-AAG-400	COVER COMP. L FR. FORK UPP	1
		17	51601-KAG-900	MOUNT RUBBER,FORK COVER UP	2
		18	51622-KAG-900	RUBBER FORK COVER UNDER MTG.	2
		19	90116-KAG-900	BOLT, SOCKET, 8 MM	2
		20	90123-KST-941	BOLT, A FR. FORK	2
		21	90123-KRM-860	BOLT, FR. FORK	2
		22	90521-292-000	WASHER, PLAIN, 10.3 MM	2
		23	90544-439-930	WASHER, SPECIAL, 8 MM	2
		24	90601-GF5-730	RING, OIL SEAL STOPPER	2
		25	91356-KAG-900	O - RING	2
		26	91255-KWA-941	SEAL OIL 30×42×11	2

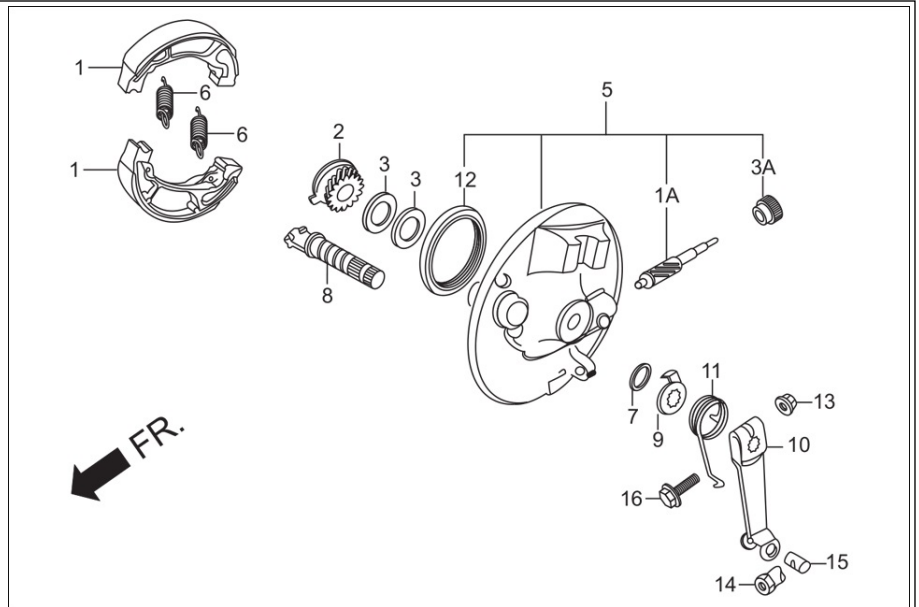
**F-7A-WO-VISOR**  
FRONT FORK (W/O VISOR)



Service Item	F.R.T.	Group Number: F-7A-WO-VISOR Model :: ECO 125 (Feb, 2020)		
Ref No.	Part Number	Description	Req.	
1	51400-KWA-941	FORK ASSY., R FRONT	1	
2	51401-KST-941	SPRING, FR. CUSHION	2	
3	51403-KCC-900	COLLAR, SPRING	2	
4	51403-447-730	JOINT, SPRING	2	
5	51410-KWA-941	PIPE COMP. FR. FORK	2	
6	51412-KAG-900	SPRING, REBOUND	2	
7	51412-KWA-941	RING BACKUP	2	
8	51420-KWA-941	CASE COMP. R, FRONT BOTTOM	1	
9	51425-KST-901	SEAL, DUST	2	
10	51432-KST-901	PIECE, OIL LOCK	2	
11	51437-KVN-901	RING, PISTON	2	
12	51440-KTR-901	PIPE, SEAT	2	
13	51500-KWA-941	FORK ASSY., L FRONT	1	
14	51520-KWA-941	CASE COMP. L, FRONT BOTTOM	1	
15	51602-AAG-410R	COV COMP R FR FORK UP(BLK,NH1 T1)	1	
	51602-AAG-410T	COV COMP R FR FORK UP(CBR,R-195C)	1	
	51602-AAG-410U	COV COMP R FR FORK UP(VBO,PB-374M)	1	
16	51606-AAG-410R	COV COMP L FR FORK UP(BLK,NH-1-1)	1	
	51606-AAG-410T	COV COMP L FR FORK UP(CBR,R-195C)	1	
	51606-AAG-410U	COV COMP L FR FORK UP(VBO,PB-374M)	1	
17	51601-KAG-900	MOUNT RUBBER,FORK COVER UP	2	
18	51622-KAG-900	RUBBER FORK COVER UNDER MTG.	2	
19	90116-KAG-900	BOLT, SOCKET, 8 MM	2	
20	90123-KST-941	BOLT, A FR. FORK	2	
21	90123-KRM-860	BOLT, FR. FORK	2	
22	90521-292-000	WASHER, PLAIN, 10.3 MM	2	
23	90544-439-930	WASHER, SPECIAL, 8 MM	2	
24	90601-GF5-730	RING, OIL SEAL STOPPER	2	

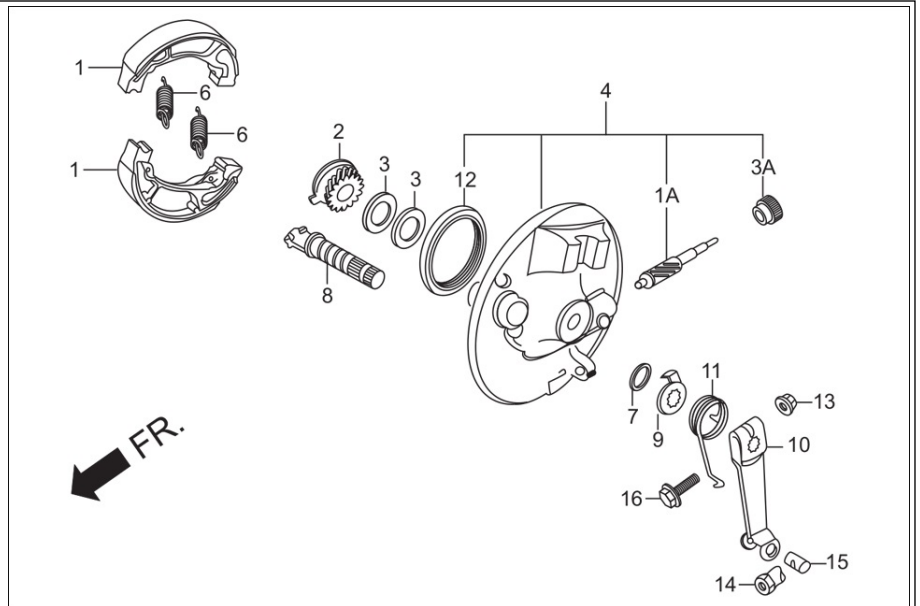
25	91356-KAG-900	O - RING	2
26	91255-KWA-941	SEAL OIL 30×42×11	2

**F-8-CAST**  
FR. BRAKE PANEL



Service Item	F.R.T.	Group Number: F-8-CAST Model :: ECO 125 (Feb, 2020)			
		Ref No.	Part Number	Description	Req.
		1	45125-AAH-F0099	SHOE COMP BRAKE	2
		1A	44805-KTC-900	PINION, SPEEDOMETER	1
		2	44806-KST-900	GEAR, SPEEDOMETER	1
		3	44809-170-000	WASHER, SPEEDOMETER GEAR	2
		3A	44810-KTC-900	BUSH, PINION	1
		5	45010-AAC-030	PANEL SUB FRONT BRAKE	1
		6	45133-KCC-900	SPRING, FR. BRAKE SHOE	2
		7	45134-250-000	DUST SEAL, BRAKE CAM	1
		8	45141-KTC-900	CAM FR. BRAKE	1
		9	45145-096-650	INDICATOR, FR. BRAKE	1
		10	45410-KTR-A20	ARM, FR. BRAKE	1
		11	45435-GB2-720	SPRING, BRAKE ARM RETURN	1
		12	91251-GK4-000	OIL SEAL, 47X60X7	1
		13	94050-06000	NUT, FLANGE, 6 MM	1
		14	95015-32001	JOINT B BRAKE ARM	1
		15	95015-42000	NUT B ADJUST	1
		16	95701-06032-00	BOLT, FLANGE, 6 X 32	1

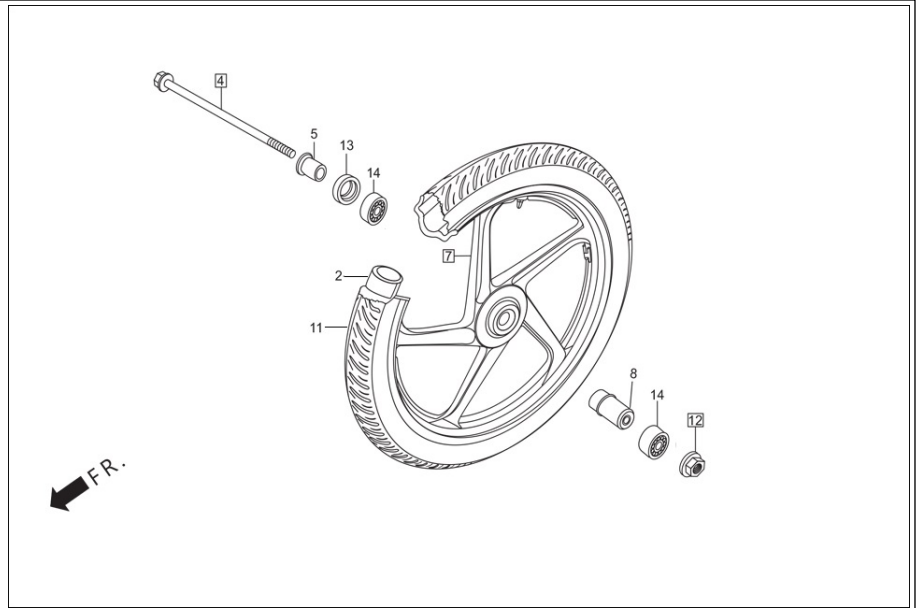
**F-8-SPOKE**  
FR. BRAKE PANEL





Service Item	F.R.T.	Group Number: F-8-SPOKE Model :: ECO 125 (Feb, 2020)			
		Ref No.	Part Number	Description	Req.
		1	45125-AAH-F0099	SHOE COMP BRAKE	2
		1A	44805-KTC-900	PINION, SPEEDOMETER	1
		2	44806-KST-900	GEAR, SPEEDOMETER	1
		3	44809-170-000	WASHER, SPEEDOMETER GEAR	2
		3A	44810-KTC-900	BUSH, PINION	1
		4	45010-AAD-000	PANEL SUB COMP. FR. BRAKE	1
		6	45133-KCC-900	SPRING, FR. BRAKE SHOE	2
		7	45134-250-000	DUST SEAL, BRAKE CAM	1
		8	45141-KTC-900	CAM FR. BRAKE	1
		9	45145-096-650	INDICATOR, FR. BRAKE	1
		10	45410-KTR-A20	ARM, FR. BRAKE	1
		11	45435-GB2-720	SPRING, BRAKE ARM RETURN	1
		12	91251-GK4-000	OIL SEAL, 47X60X7	1
		13	94050-06000	NUT, FLANGE, 6 MM	1
		14	95015-32001	JOINT B BRAKE ARM	1
		15	95015-42000	NUT B ADJUST	1
		16	95701-06032-00	BOLT, FLANGE, 6 X 32	1

## F-9-CAST FRONT WHEEL



Service Item

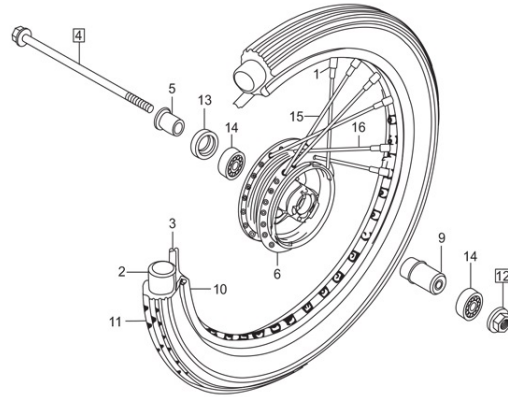
F.R.T.

Group Number: F-9-CAST Model :: ECO 125 (Feb, 2020)

Ref No.	Part Number	Description	Req.
2	44712-KTC-902	TUBE, TYRE (2.75X18)	1
4	44301-KTR-700	AXLE, FR. WHEEL	1
5	44311-KRC-900	COLLAR, FR. WHEEL SIDE	1
7	44601-AAC-H00	WHEEL COMP FRONT	1
8	44620-400-000	COLLAR, FRONT DISTANCE	1
11	44711-KST-940	TYRE, FRONT (2.75-18-42P)	1
12	90306-KST-942	NUT, CASTLE, 12 MM	1
13	91251-KPH-901	DUST SEAL, 21 X 37 X 7	1
14	96140-63010-10	BEARING, RADIAL BALL, 6301U	2

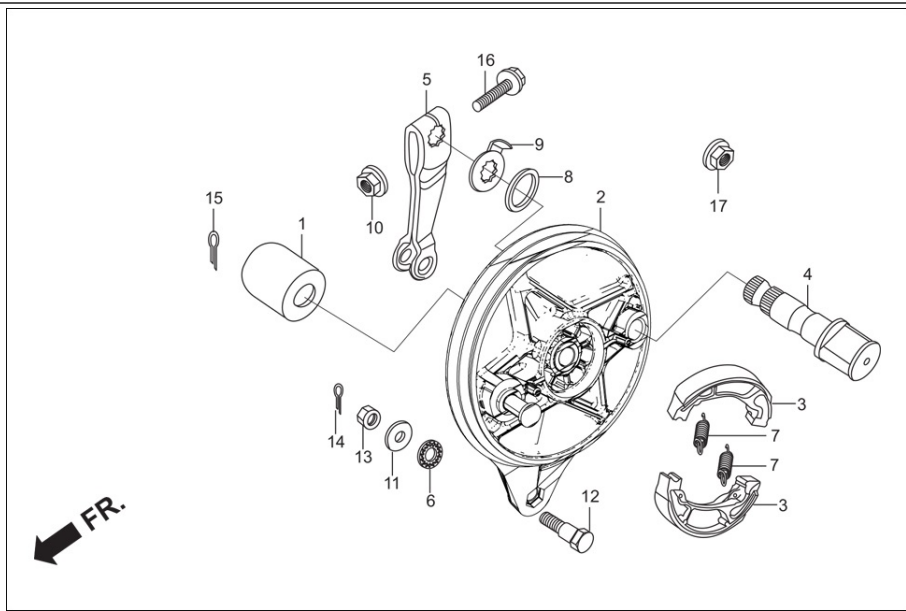
**F-9-SPOKE**  
FRONT WHEEL

FR.



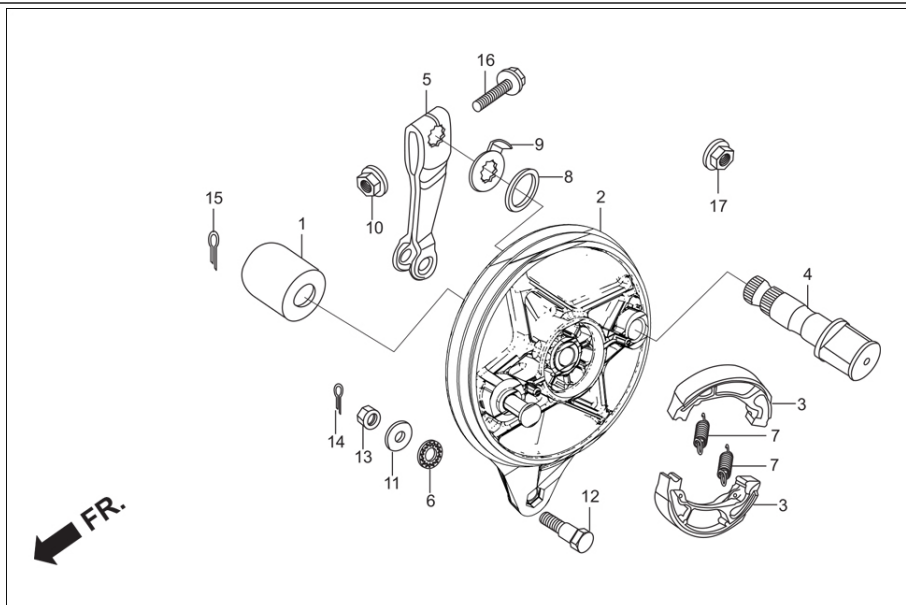
Service Item	F.R.T.	Group Number: F-9-SPOKE Model :: ECO 125 (Feb, 2020)			
		Ref No.	Part Number	Description	Req.
		1	42603-198-900	NIPPLE, SPOKE-9	36
		2	44712-KTC-902	TUBE, TYRE (2.75X18)	1
		3	42713-KFN-850	FLAP, TYRE (1.40 X 18)	1
		4	44301-KTR-700	AXLE, FR. WHEEL	1
		5	44311-KRC-900	COLLAR, FR. WHEEL SIDE	1
		6	44601-KTR-940Z	HUB COMP., FR. WHEEL (CSM)	1
		9	44620-198-900	COLLAR, FR. AXLE DISTANCE	1
		10	44701-AAC-H00	RIM FRONT WHEEL	1
		11	44711-KST-940	TYRE, FRONT (2.75-18-42P)	1
		12	90306-KST-942	NUT, CASTLE, 12 MM	1
		13	91251-KPH-901	DUST SEAL, 21 X 37 X 7	1
		14	96140-63010-10	BEARING, RADIAL BALL, 6301U	2
		15	97252-51162-10	SPOKE,A 9 X161	18
		16	97603-51162-10	SPOKE, A 9 X 161	18

**F-10-CAST**  
REAR BRAKE PANEL



Service Item	F.R.T.	Group Number: F-10-CAST Model :: ECO 125 (Feb, 2020)			
		Ref No.	Part Number	Description	Req.
		1	42313-198-900	COLLAR, RR. BRAKE PANEL SIDE	1
		2	43100-KTR-700	PANEL COMP., RR. BRAKE	1
		3	45125-AAH-F0099	SHOE COMP BRAKE	2
		4	43141-KTC-900	CAM, REAR BRAKE	1
		5	43410-KCT-690	ARM, REAR BRAKE	1
		6	43434-286-000	RUBBER, STOPPER ARM CUSHION	1
		7	45133-KCC-900	SPRING, FR. BRAKE SHOE	2
		8	45134-250-000	DUST SEAL, BRAKE CAM	1
		9	45145-KFM-900	INDICATOR, FR. BRK	1
		10	90301-473-000	NUT,U 6MM	1
		11	90505-425-000	WASHER, 8 MM	1
		12	92811-10000	BOLT A BRAKE STOPPER	1
		13	94001-08000-0S	NUT, HEX., 8 MM	1
		14	94201-20150	PIN, SPLIT, 2.0 X 15	1
		15	94201-30250	PIN, SPLIT, 3.0 X 25	1
		16	95701-06035-00	BOLT, FLANGE, 6X35	1
		17	90302-KTE-911	NUT FLANGE PT 6MM	1

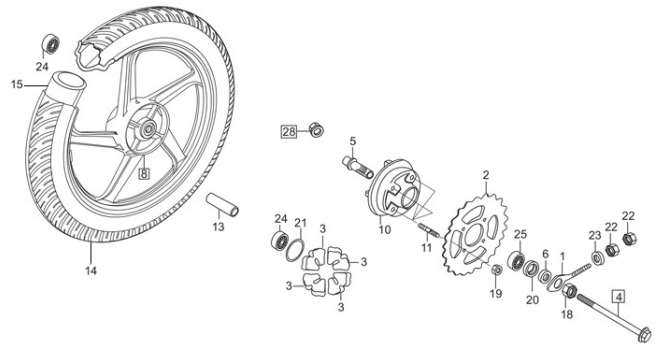
**F-10-SPOKE**  
REAR BRAKE PANEL



Service Item	F.R.T.	Group Number: F-10-SPOKE Model :: ECO 125 (Feb, 2020)			
		Ref No.	Part Number	Description	Req.
		1	42313-198-900	COLLAR, RR. BRAKE PANEL SIDE	1
		2	43100-KTC-900	PANEL COMP., RR. BRAKE	1
		3	45125-AAH-F0099	SHOE COMP BRAKE	2
		4	43141-KTC-900	CAM, REAR BRAKE	1
		5	43410-KCT-690	ARM, REAR BRAKE	1
		6	43434-286-000	RUBBER, STOPPER ARM CUSHION	1
		7	45133-KCC-900	SPRING, FR. BRAKE SHOE	2
		8	45134-250-000	DUST SEAL, BRAKE CAM	1
		9	45145-KFM-900	INDICATOR, FR. BRK	1
		10	90301-473-000	NUT,U 6MM	1
		11	90505-425-000	WASHER, 8 MM	1
		12	92811-10000	BOLT A BRAKE STOPPER	1
		13	94001-08000-0S	NUT, HEX., 8 MM	1
		14	94201-20150	PIN, SPLIT, 2.0 X 15	1
		15	94201-30250	PIN, SPLIT, 3.0 X 25	1
		16	95701-06035-00	BOLT, FLANGE, 6X35	1
		17	90302-KTE-911	NUT FLANGE PT 6MM	1



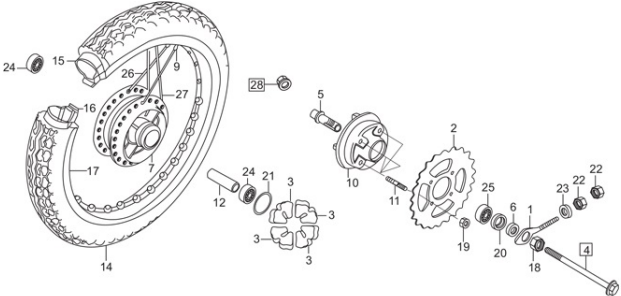
# F-11-CAST REAR WHEEL



FR.

Service Item	F.R.T.	Group Number: F-11-CAST Model :: ECO 125 (Feb, 2020)			
		Ref No.	Part Number	Description	Req.
		1	40543-KTR-900	ADJUSTER COMP., L CHAIN	1
		2	41201-KTC-900	SPROCKET, FINAL DRIVEN (42T)	1
		3	41241-AAN-410	DAMPER, REAR WHEEL	4
		4	42301-KTR-700	AXLE, REAR WHEEL	1
		5	42303-KTR-900	SLEEVE, REAR WHEEL	1
		6	42304-KTC-900	COLLAR, RR.AXLE SLEEVE	1
		8	42601-AAC-H00	WHEEL COMP REAR	1
		10	42611-KTC-900	FLANGE, FINAL DRIVEN	1
		11	42615-198-900	BOLT, STUD., 8 X 42	4
		13	42620-KTR-700	COLLAR, REAR AXLE DISTANCE	1
		14	42711-KST-940	TYRE, RR. (2.75 X 18 - 48 P)	1
		15	44712-KTC-902	TUBE, TYRE (2.75X18)	1
		18	90307-001-000	NUT ,RR. AXLE SLEEVE	1
		19	90309-357-000	NUT, HEX .,8MM	4
		20	90753-029-000	OIL SEAL, 27 X 40 X 6	1
		21	91304-704-000	O-RING 42 MM	1
		22	90302-KBP-900	NUT SPL 6 MM	1
		23	94101-06000	WASHER, PLAIN, 6 MM	1
		24	96140-63010-10	BEARING, RADIAL BALL, 6301U	2
		25	96150-62030-10	BEARING, BALL RADIAL, 6203 (UU)	1
		28	90306-KTE-911	NUT, CASTLE, 12 MM	1

**F-11-SPOKE**  
REAR WHEEL

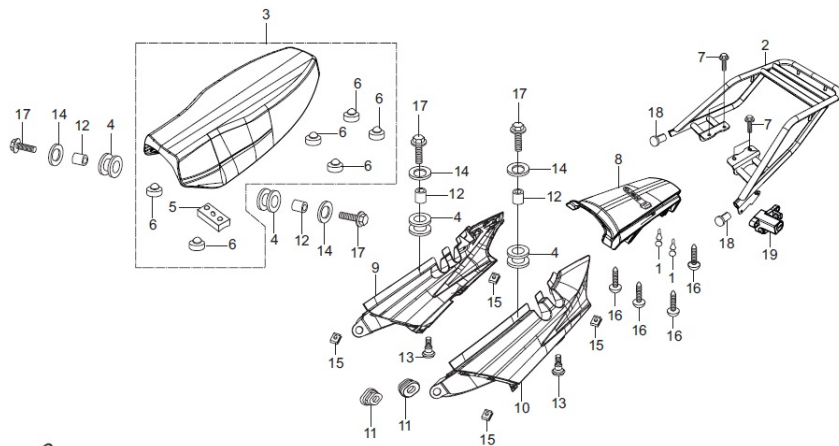


FR.

Service Item	F.R.T.	Group Number: F-11-SPOKE Model :: ECO 125 (Feb, 2020)			
		Ref No.	Part Number	Description	Req.
		1	40543-KTR-900	ADJUSTER COMP., L CHAIN	1
		2	41201-KTC-900	SPROCKET, FINAL DRIVEN (42T)	1
		3	41241-AAN-410	DAMPER, REAR WHEEL	4
		4	42301-KTR-700	AXLE, REAR WHEEL	1
		5	42303-KTR-900	SLEEVE, REAR WHEEL	1
		6	42304-KTC-900	COLLAR, RR.AXLE SLEEVE	1
		7	42601-KTR-940Z	HUB RR. WHEEL(CSM)	1
		9	42603-198-900	NIPPLE, SPOKE-9	36
		10	42611-KTC-900	FLANGE, FINAL DRIVEN	1
		11	42615-198-900	BOLT, STUD., 8 X 42	4
		12	42620-KTR-940	COLLAR, REAR AXLE DISTANCE	1
		14	42711-KST-940	TYRE, RR. (2.75 X 18 - 48 P)	1
		15	44712-KTC-902	TUBE, TYRE (2.75X18)	1
		16	42713-KFN-850	FLAP, TYRE (1.40 X 18)	1
		17	44701-AAC-H00	RIM FRONT WHEEL	1
		18	90307-001-000	NUT ,RR. AXLE SLEEVE	1
		19	90309-357-000	NUT, HEX ,8MM	4
		20	90753-029-000	OIL SEAL, 27 X 40 X 6	1
		21	91304-704-000	O-RING 42 MM	1
		22	90302-KBP-900	NUT SPL 6 MM	2
		23	94101-06000	WASHER, PLAIN, 6 MM	1
		24	96140-63010-10	BEARING, RADIAL BALL, 6301U	2
		25	96150-62030-10	BEARING, BALL RADIAL, 6203 (UU)	1
		26	97252-51162-10	SPOKE,A 9 X161	18
		27	97687-51161-10	SPOKE,A9X160.5	18
		28	90306-KTE-911	NUT, CASTLE, 12 MM	1

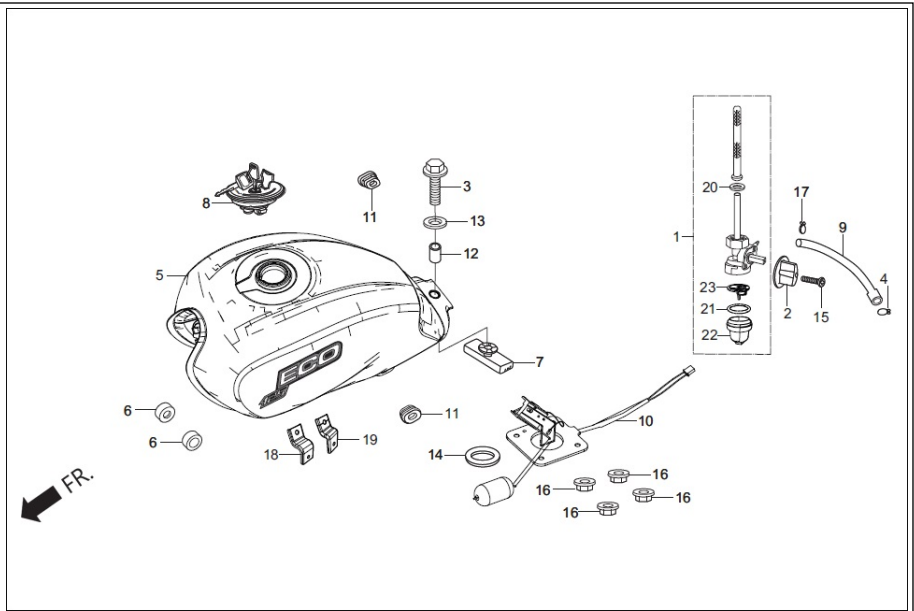
**F-12**  
SEAT ASSY./RR COWL/CARRIER REAR

← FR.



Service Item	F.R.T.	Group Number: F-12 Model :: ECO 125 (Feb, 2020)			
		Ref No.	Part Number	Description	Req.
		1	17512-KCC-900	STOPPER, TANK LID	2
		2	81200-AAG-C00	CARRIER, COMP, REAR	1
		3	77200-AAG-C10	SEAT ASSY, DOUBLE	1
		4	77202-KCC-900	RUBBER, SEAT MOUNTING	4
		5	77204-KCC-900	RUBBER, `A SEAT SETTING	1
		6	77206-AAG-000	RUBBER SEAT CUSHION	6
			77206-KCC-900	RUBBER, SEAT CUSHION	6
		7	95701-08016-00	BOLT, FLANGE, 8X16	4
		8	77235-AAG-C00R	SET, CENTER RR COWL (BLACK NH-1)	1
		9	77246-AAG-000R	SET, R. BODY COWL (BLACK-1)	1
		10	77256-AAG-000R	SET, L. BODY COWL (BLACK-1)	1
		11	83551-300-000	GROMMET, AIR CLEANER CASE	2
		12	84702-KCC-900	COLLAR, STAY NO. PLATE SET	4
		13	90101-GE0-000	SCREW, HINGE PATCH	2
		14	90563-355-000	WASHER, WHEEL, 6 MM	4
		15	90320-GC3-000	NUT, SPRING, M5	4
		16	93903-24310	SCREW, TAPPING, 4X12	4
		17	95701-06025-00	BOLT, FLANGE, 6X 25	4
		18	84103-KCC-900	CAP, CARRIER RR.	2
		19	50720-AAG-H01	HOLDER ASSY HELMET	1

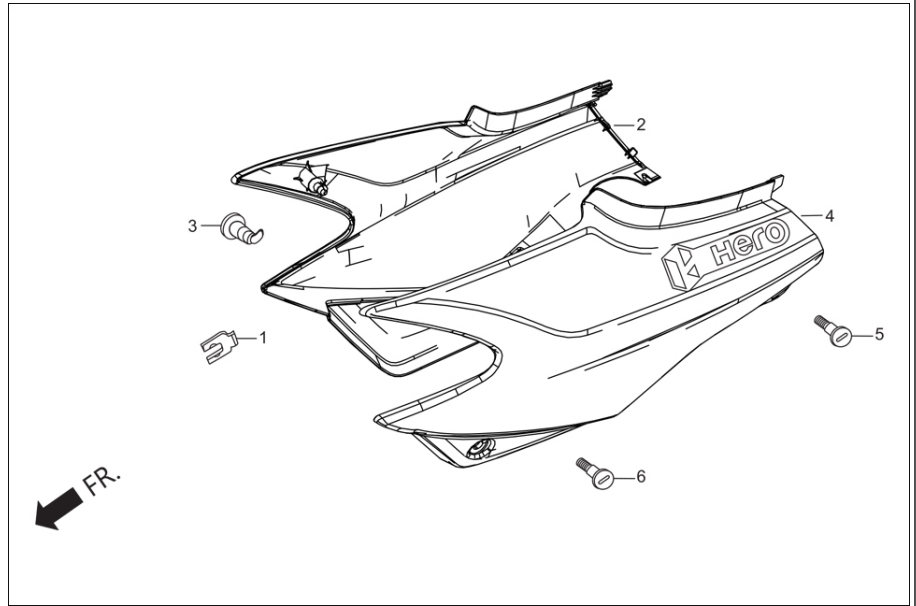
**F-13**  
FUEL TANK



Service Item	F.R.T.	Group Number: F-13 Model :: ECO 125 (Feb, 2020)		
Ref No.	Part Number	Description	Req.	
1	16950-AAG-400099	COCK ASSY FUEL	1	
2	16955-AAG-000	LEVER FUEL COCK	1	
3	95701-08035-00	BOLT, FLANGE, 8 X 35	1	
4	95002-02100	CLIP, B-10 TUBE	1	
5	17505-AAG-C10R	SET, FUEL TANK (BLACK NH-1).	1	
	17505-AAG-C10T	SET, FUEL TANK (CANDY BLAZING RED).	1	
	17505-AAG-C10U	SET, FUEL TANK (VIBRANT BLUE ME.).	1	
6	17611-KTR-A00	CUSHION, FRONT FUEL TANK	2	
7	17613-KTR-A00	CUSHION, REAR TANK	1	
8	17620-KST-H61	CAP COMP.FUEL FILLER	1	
9	17681-KTC-900	TUBE,FUEL	1	
10	37800-KTC-A21	UNIT, ASSY., FUEL	1	
11	83551-300-000	GROMMET, AIR CLEANER CASE	2	
12	90324-KCC-900	COLLAR, 8 MM	1	
13	90325-KCC-900	WASHER, PLAIN, 8 MM	1	
14	91305-443-740	O RING, 39.5 X 5	1	
15	93500-04025-0G	SCREW, PAN, 4X25	1	
16	94050-06000	NUT, FLANGE, 6 MM	4	
17	95002-02080	CLIP, TUBE	1	
18	17517-KTC-A20	STAY, U BOX FR.	1	
19	17518-KTC-A20	STAY, U BOX RR.	1	
20	16958-397-770	O-RING	1	
21	16173-001-000	O- RING	1	
22	16967-MA2-770	CUP, FUEL STRAINER	1	
23	16959-HB3-000	FILTER, CUP	1	

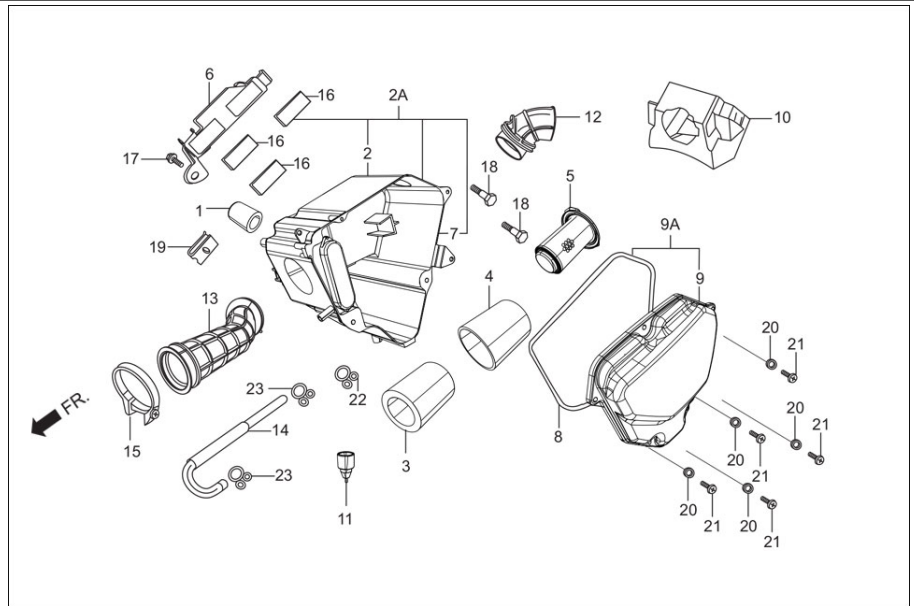


**F-14**  
SIDE COVER



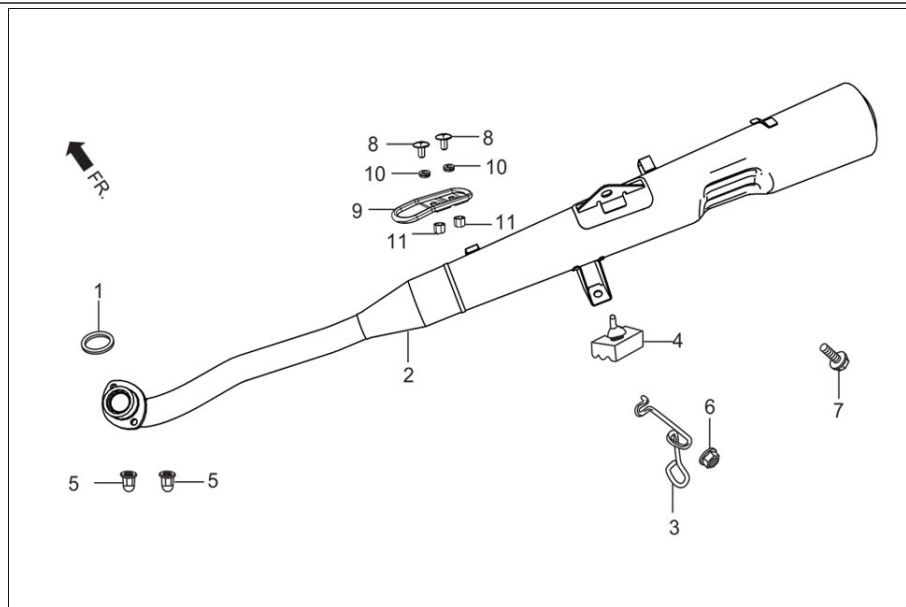
Service Item	F.R.T.	Group Number: F-14 Model :: ECO 125 (Feb, 2020)			
		Ref No.	Part Number	Description	Req.
		1	75581-673-000	SET SPRING, LOCK KEY	1
		2	83500-AAG-C00R	SET, R BODY COVER (BLACK NH-1)	1
		3	83550-KTC-H01	LOCK SIDE COVER	1
		4	83600-AAG-C00R	SET, L BODY COVER (BLACK NH-1)	1
		5	90101-GE0-000	SCREW, HINGE PATCH	1
		6	90381-KWA-940	SCREW SPECIAL 6×13	1

**F-15**  
AIR CLEANER



<b>Service Item</b>	<b>F.R.T.</b>	<b>Group Number: F-15 Model :: ECO 125 (Feb, 2020)</b>			
		<b>Ref No.</b>	<b>Part Number</b>	<b>Description</b>	<b>Req.</b>
* CASE, SUB ASSY AIR/C	0.3	1	18651-KST-900	PLUG,AIR/C	1
* ELEMENT, AIR/C	0.2	2	17210-KWA-840	CASE, AIR/C	1
* HOLDER, ELEMENT	--	2A	17225-KWA-840	CASE SUB ASSY., AIR/C	1
* COVER SUB ASSY AIR/C	--	3	17211-AAAG-400	ELEMENT A AIR CLEANER	1
* DUCT, AIR/C INLET	--	4	17213-AAAG-400	ELEMENT B AIR CLEANER	1
* TUBE, AIR/C CONN	--	5	17212-AAAG-400	HOLDER, ELEMENT	1
* BAND, BATTERY	--	6	17214-KWA-840	BAND, BATTERY	1
		7	17218-KTC-900	SEAL AIR CLEANER	1
		8	17219-KTC-900	SEAL, A/I CLEANER	1
		9	17220-KTC-900H	COVER,AIR/C	1
		9A	17235-KTC-900	COVER SUB ASSY. AIR/C	1
		10	17234-KTC-900	COVER, AIR/C DUCT	1
		11	17234-KCC-940	TUBE AIR CLEANER DRAIN	1
		12	17251-KTC-900	DUCT, AIR/C INLET	1
		13	17253-KTC-900	TUBE, AIR/C CONN.	1
		14	17365-KTC-900	TUBE, BREATHER	1
		15	95018-46320	BAND 46 AIR/C CONN. TUBE	1
		16	83407-KTR-940	RUBBER, BATTERY	3
		17	90101-KWA-830	BOLT FLANGE 6X18	1
		18	90111-187-000	BOLT, FLANGE. 6 MM	2
		19	90311-MT3-000	NUT, CLIP, 6 MM	1
		20	94101-05000	WASHER , PLAIN, 5MM	5
		21	93500-05016-0A	SCREW, PAN, 5 X 16	5
		22	95002-02130	CLIP B 12.5 TUBE	1
		23	95002-80000	CLIP,C12 TUBE	2

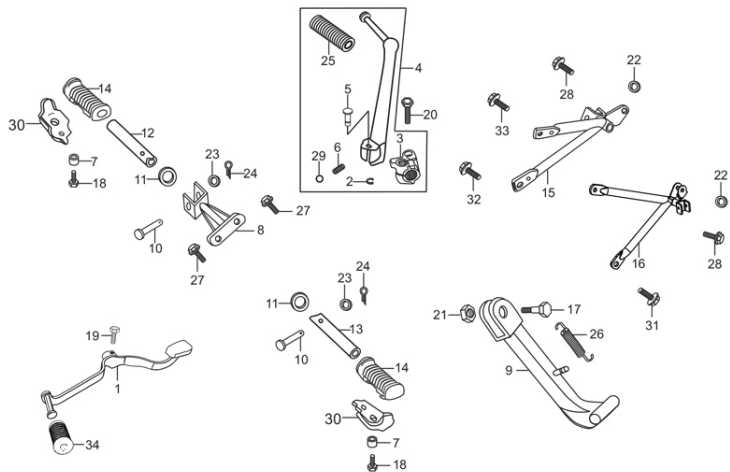
**F-16**  
MUFFLER



<b>Service Item</b>	<b>F.R.T.</b>	<b>Group Number: F-16 Model :: ECO 125 (Feb, 2020)</b>			
* COVER, EXH. PIPE	0.1	<b>Ref No.</b>	<b>Part Number</b>	<b>Description</b>	<b>Req.</b>
* GASKET, EXH. PIPE	--	1	18291-KTR-A00	GASKET, EXHAUST PIPE	1
* GUIDE, TUBE	0.2	2	18350-AAG-000	MUFFLER COMP EXH	1
* MUFFLER COMP., EXH.	0.3	3	50181-KTR-940	GUIDE,HOSE	1
		4	50505-KCC-900	STOPPER RUBBER, A STAND	1
		5	90304-KPH-900	NUT, HEX. CAP, 8 MM	2
		6	94050-06000	NUT, FLANGE, 6 MM	1
		7	95701-08016-00	BOLT, FLANGE, 8X16	1
		8	90107-KST-940	SCREW MUFF. PROTECTOR MOUNT	2
		9	18351-KTR-A20	GUARD, MUFFLER	1
		10	18345-KST-940	RUBBER PROTECTOR	2
		11	17221-KA4-300	COLLAR CONN TUBE	2

**F-17**  
STEP ASSY./KICK STARTER/GEAR  
CHANGE PEDAL/SIDE STAND

FR.

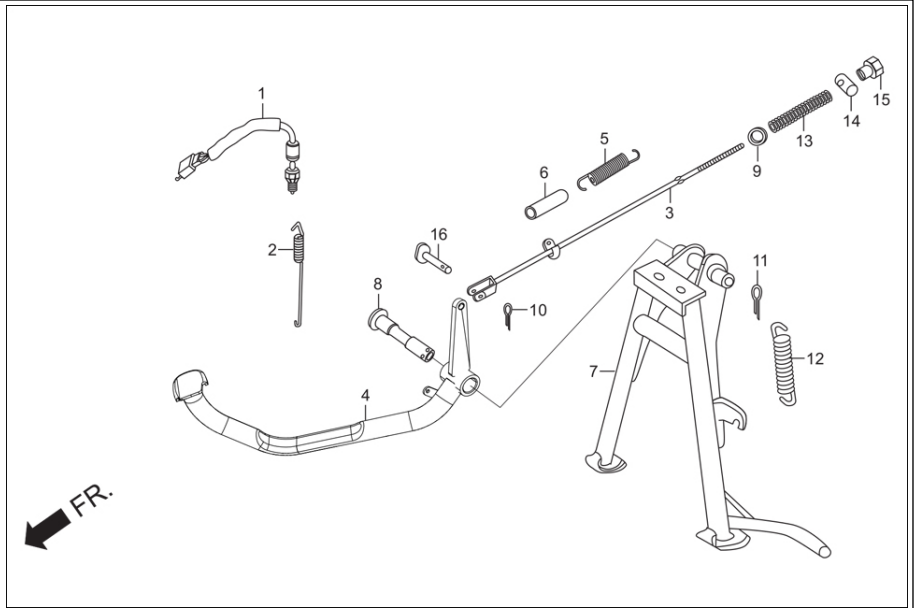


Service Item	F.R.T.	Group Number: F-17 Model :: ECO 125 (Feb, 2020)			
		Ref No.	Part Number	Description	Req.
		1	24701-AAG-C00	PEDAL, GEAR CHANGE	1
		2	28293-KAG-900	CLIP, KICK STARTER	1
		3	28302-KTR-840	JOINT KICK ARM	1
		4	2830A-KTR-840	ARM ASSY. COMP. KICK STATER	1
		5	28321-KTC-900	PIN, KICK STARTER	1
		6	28333-124-000	SPRING, KICK STARTER STOPPER	1
		7	37243-323-000	COLLAR , METER SET	2
		8	50160-KTC-900	BRKT. COMP., R STEP	1
		9	50530-KCC-900	BAR COMP. SIDE STAND	1
		10	50603-KB4-000	PIN, MAIN STEP BAR JOINT	2
		11	50614-413-000	WASHER, MAIN STEP	2
		12	50618-KCC-000	BAR R STEP	1
		13	50619-KCC-000	BAR L STEP	1
		14	50661-AAJ-H00	RUBBER, STEP	2
		15	50701-AAG-000	BRKT COMP P STEP R	1
		16	50702-AAG-000	BRKT COMP P STEP L	1
		17	90107-GN1-010	SCREW SIDE STAND PIVOT	1
		18	92000-06016-0A	BOLT, HEX., 6 X 16	2
		19	92000-06020-0A	BOLT, HEX, 6 X 20	1
		20	92101-08032-0A	BOLT HEX., 8 X 32	1
		21	94030-10000	NUT HEX., 10MM	1
		22	94101-06000	WASHER, PLAIN, 6 MM	2
		23	94101-08000	WASHER, PLAIN, 8MM	2
		24	94201-16150	PIN, SPLIT, 1.6 X 15	2
		25	95011-51000	RUBBER, A KICK STARTER	1
		26	95014-72302	SPRING, C SIDE STAND	1
		27	95701-08016-07	BOLT FLANGE, 8 X 16	2
		28	95701-10045-07	BOLT FLANGE, 10 X 45	2

29	96211-08000	BALL STEEL 8 MM	1
30	50619-425-010	STOPPER, STEP RUBBER	2
31	95701-06040-00	BOLT FLANGE 6X40	1
32	95801-08040-00	BOLT,FLANGE,8 X 40	1
33	95801-08045-00	BOLT FLANGE 8X45	1
34	24781-KR3-770	RUBBER, CHANGE PEDAL	1

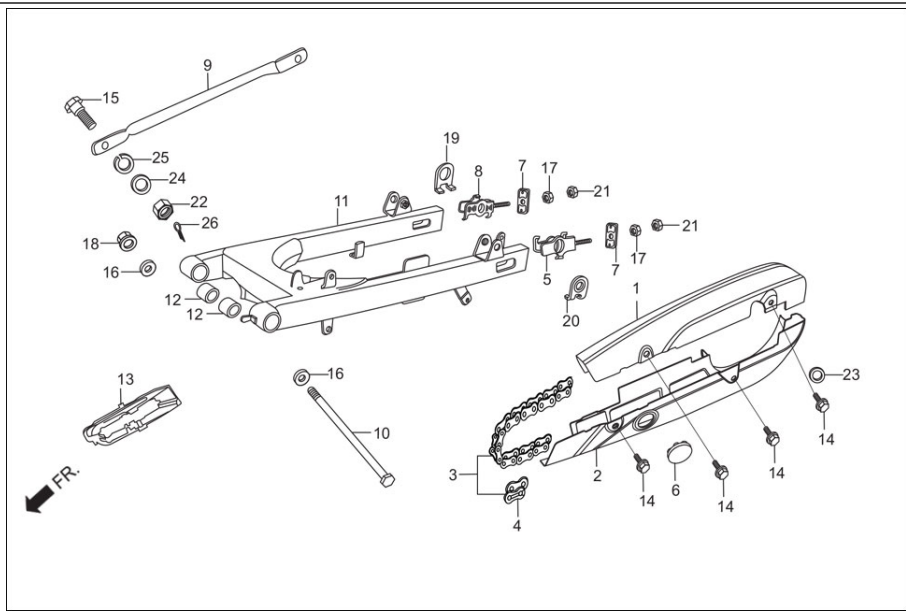


**F-18**  
MAIN STAND/PEDAL BRAKE



Service Item	F.R.T.	Group Number: F-18 Model :: ECO 125 (Feb, 2020)			
		Ref No.	Part Number	Description	Req.
		1	35350-KTR-A00	SWITCH ASSY, REAR STOP	1
		2	35357-KCC-900	SPRING STOP SWITCH	1
		3	43451-KTC-900	ROD COMP. RR. BRAKE	1
		4	46500-AAG-C00	PEDAL, BRAKE	1
		5	46514-KCC-900	SPRING , BRAKE PEDAL	1
		6	46515-KB9-000	TUBE , BRAKE PEDAL SPRING	1
		7	50500-KTR-A00	STAND COMP.MAIN	1
		8	50512-KTC-900	PIPE, RR. BRAKE PIVOT	1
		9	90502-198-900	WASHER , BRAKE ROD	1
		10	94201-20150	PIN, SPLIT, 2.0 X 15	1
		11	94201-30250	PIN, SPLIT, 3.0 X 25	1
		12	95014-71702	SPRING G MAIN STAND	1
		13	95014-73100	SPRING A BRAKE ROD	1
		14	95015-32001	JOINT B BRAKE ARM	1
		15	95015-42000	NUT B ADJUST	1
		16	95015-53000	PIN, C JOINT	1

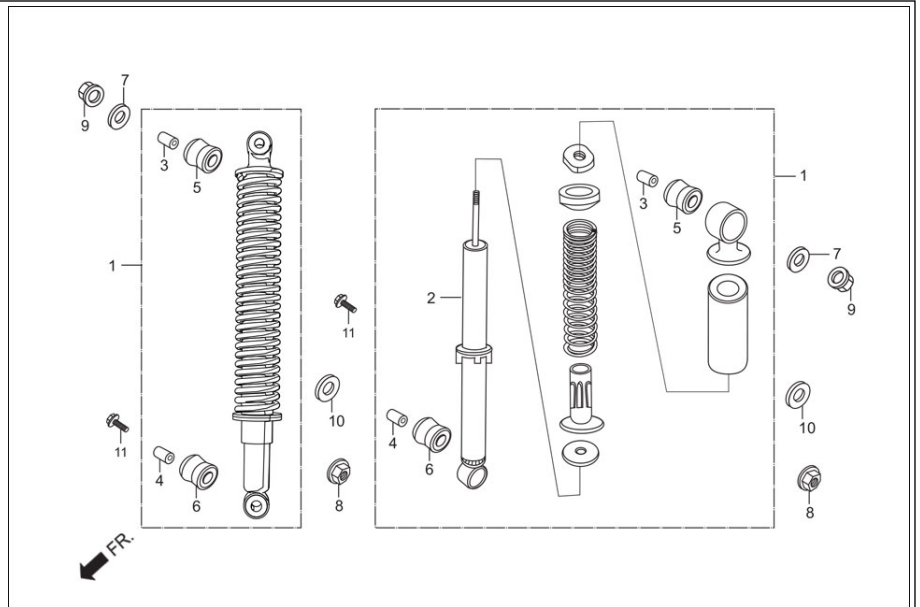
**F-19**  
SWINGARM/CHAIN CASE



Service Item	F.R.T.
* CASE, UPPER (HALF) DRIVE CHAIN (ONE OR ALL)	0.1 --
* CHAIN, DRIVE	0.3
* ARM, RR BRAKE STOPPER	0.2
* SWING ARM, SUB ASSY, RR	0.7
* RUBBER BUSH, RR FORK PIVOT	1.0
* PACKING, DRIVE CHAIN CASE	--

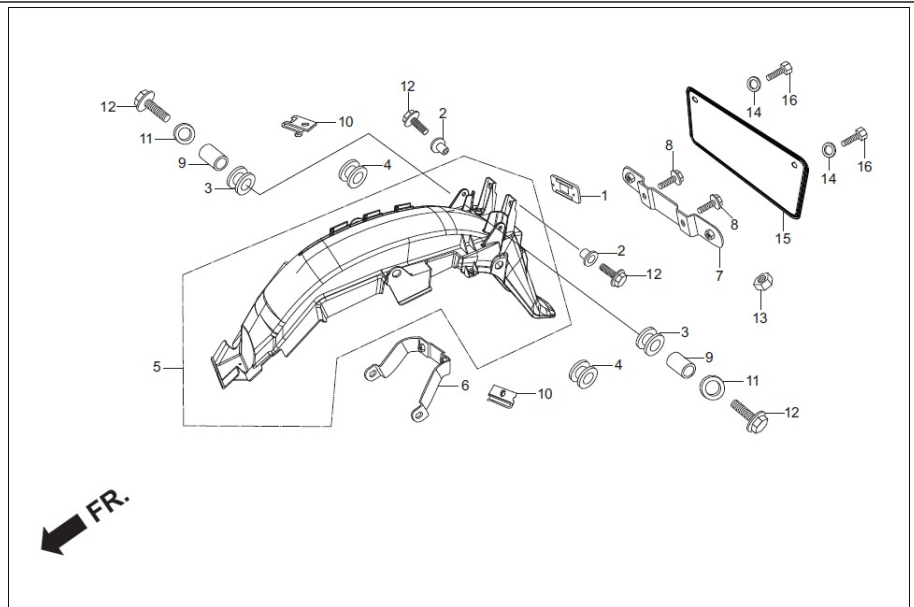
Group Number: F-19 Model :: ECO 125 (Feb, 2020)				
Ref No.	Part Number	Description	Req.	
1	40510-KTR-940Z	CASE, UPPER (HALF) DRIVE CHAIN	1	
2	40520-KTR-940	CASE, UNDER (HALF) DRIVE CHAIN	1	
3	40530-KCC-900	CHAIN, DRIVE (428-108)	1	
4	40531-205-010	JOINT RJ, DRIVE CHAIN	1	
5	40543-KTR-900	ADJUSTER COMP., L CHAIN	1	
6	40545-001-000	CAP, CHAIN PEEP HOLE	1	
7	40546-KPG-T00	CAP SWINGARM, END	2	
8	40546-KTR-900	ADJUSTER COMP., R CHAIN	1	
9	43431-KTR-900	ARM, RR, BRAKE STOPPER	1	
10	52101-KTC-900	BOLT, SWINGARM PIVOT	1	
11	52110-KTR-940	SWINGARM, COMP. RR	1	
12	52147-KTC-900	RUBBER BUSH, RR. FORK PIVOT	2	
13	52170-KTR-900	SLIDER, CHAIN	1	
14	90118-383-000	BOLT, WASHER, 6 X6	4	
15	90133-331-770	BOLT, HEX., 8MM	1	
16	90183-KTC-900	WASHER, SPL., 12 MM	2	
17	90302-KBP-900	NUT SPL 6 MM	2	
18	90306-KST-942	NUT, CASTLE, 12 MM	1	
19	90558-KTR-900	WASHER, RR AXLE (RIGHT)	1	
20	90559-KTR-900	WASHER, RR AXLE (LEFT)	1	
21	94001-06000-0S	NUT, HEX., 6 MM	2	
22	94001-08000-0S	NUT, HEX., 8 MM	1	
23	94101-06000	WASHER, PLAIN, 6 MM	1	
24	94101-08000	WASHER, PLAIN, 8MM	1	
25	94111-10000	WASHER, SPRING, 10MM	1	
26	94201-20150	PIN, SPLIT, 2.0 X 15	1	

**F-20**  
REAR CUSHION



<b>Service Item</b>	<b>F.R.T.</b>	<b>Group Number: F-20 Model :: ECO 125 (Feb, 2020)</b>			
		<b>Ref No.</b>	<b>Part Number</b>	<b>Description</b>	<b>Req.</b>
* CUSHION ASSY, REAR (ONE OR ALL)	0.2 --	1	52400-AAG-400	CUSHION ASSY., REAR	2
* DAMPER COMP, REAR (ADD 02 FOR EACH)	0.4 --	2	52410-KTC-A21	DAMPER COMP., REAR	2
		3	52486-056-000	COLLAR, RUBBER BUSH (UPPER)	2
		4	52486-KAG-900	COLLAR ,RUBBER BUSH (UNDER)	2
		5	52489-399-600	BUSH ,RUBBER (UPPER)	2
		6	52495-098-000	BUSH, RUBBER (UNDER)	2
		7	90551-178-000	WASHER,SPL., 10MM	2
		8	94002-10000-0S	NUT, HEX, 10MM	2
		9	94050-10000	NUT, FLANGE, 10MM	2
		10	94101-12800	WASHER,PLAIN ,12 MM	2
		11	95801-10035-00	BOLT, FLANGE, 10X35	2

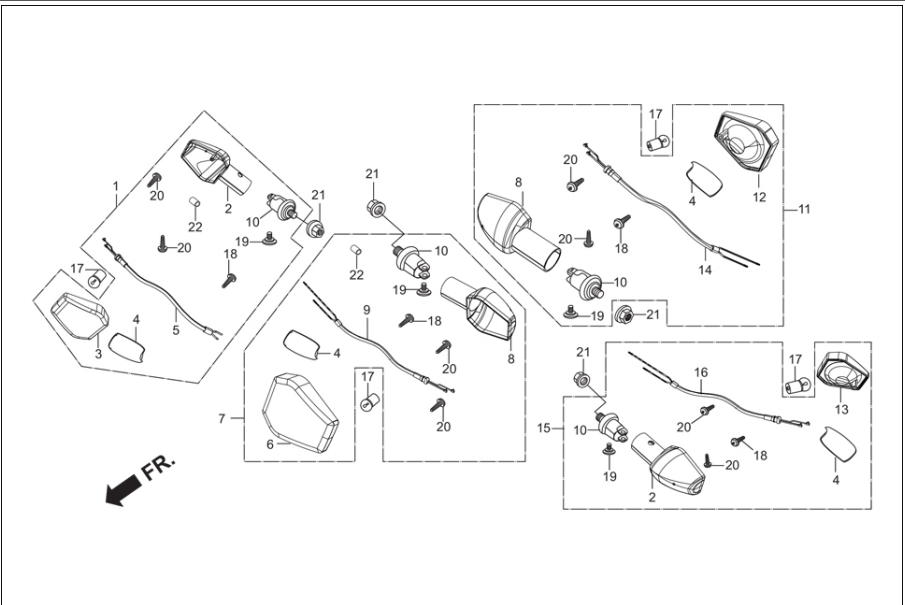
**F-21**  
REAR FENDER



Service Item	F.R.T.	Group Number: F-21 Model :: ECO 125 (Feb, 2020)		
Ref No.	Part Number	Description	Req.	
1	33741-KST-920	REFLEX REFLECTOR	1	
2	61107-KK6-000	WASHER, 6MM	2	
3	61103-357-000	RUBBER FR. FENDER MOUNT	2	
4	77202-KCC-900	RUBBER, SEAT MOUNTING	2	
5	80100-AAG-000	FENDER COMP REAR	1	
6	80151-KTC-900	PLATE, RR. WINKER	1	
7	84701-KTC-900	BRACKET, RR. NO. PLATE	1	
8	95701-06020-00	BOLT, FLANGE, 6X20	2	
9	84702-KCC-900	COLLAR, STAY NO. PLATE SET	2	
10	90320-GC3-000	NUT, SPRING, M5	2	
11	90563-355-000	WASHER, WHEEL, 6 MM	2	
12	95701-06016-00	BOLT, FLANGE, 6X16	4	
13	94002-06000-0S	NUT, HEX 6MM	1	
14	94101-06000	WASHER, PLAIN, 6 MM	2	
15	84701-P26-D00A	NUMBER, PLATE REAR	1	
16	92000-06012-0A	BOLT,HEX.,6X12	2	

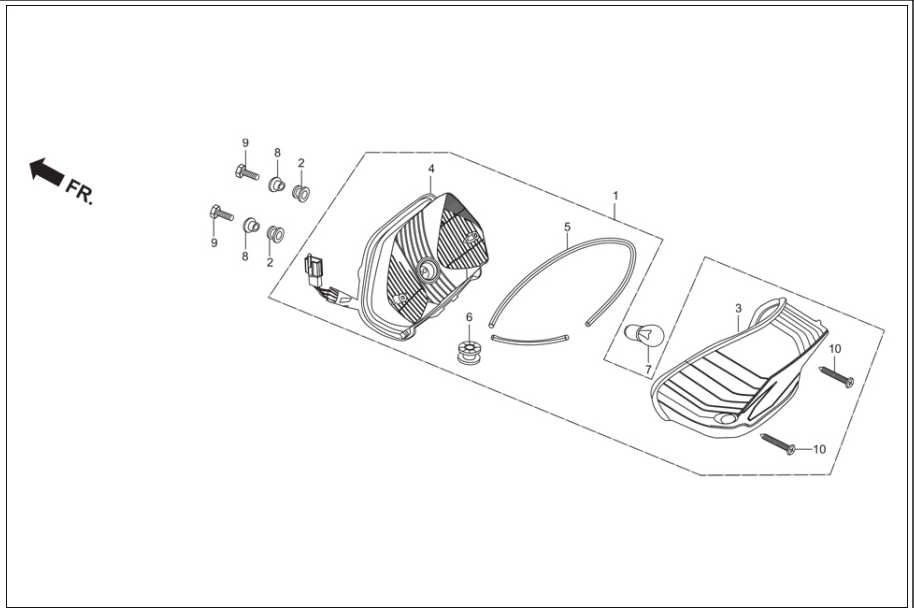


**F-22**  
**WINKERS**



Service Item	F.R.T.	Group Number: F-22 Model :: ECO 125 (Feb, 2020)			
		Ref No.	Part Number	Description	Req.
		1	3340B-AAG-401	WINKER ASSY. R FRONT(W/O BULB)	1
		2	33401-KTR-901	BASE WINKER R	2
		3	33403-KTR-901	LENS COMP., R WINKER	1
		4	33406-KTR-901	SEAL, GASKET.	4
		5	33415-AAG-401	SOCKET COMP., R. FR. WINKER	1
		6	33453-KTR-901	LENS COMP., L WINKER	1
		7	3345B-AAG-401	WINKER ASSY L FRONT(W/O BULB)	1
		8	33451-KTR-901	BASE WINKER L	2
		9	33465-AAG-401	SOCKET COMP., L. WINKER	1
		10	33491-KAF-000	STAY COMP., WINKER	4
		11	3360B-AAG-401	WINKER ASSY R REAR(W/O BULB)	1
		12	33603-KTR-901	LENS COMP., R WINKER	1
		13	33653-KTR-900	LENS COMP., L WINKER	1
		14	33615-AAG-401	SOCKET COMP., R. WINKER	1
		15	3365B-AAG-401	WINKER ASSY L REAR(W/O BULB)	1
		16	33665-AAG-401	SOCKET COMP., L. RR WINKER	1
		17	34904-AAM-301	BULB, WINKER LIGHT, (R10W)	4
		18	90380-MB2-000	SCREW, SPECIAL, 6 X 8	4
		19	93903-34480	SCREW, TAPPING, 4X 16	4
		20	93901-22310	SCREW, TAPPING, 3 X 12	8
		21	94050-10000	NUT, FLANGE, 10MM	4
		22	33650-KAF-000	COLLAR FR. WINKER LIGHT	2

**F-23**  
TAIL LIGHT

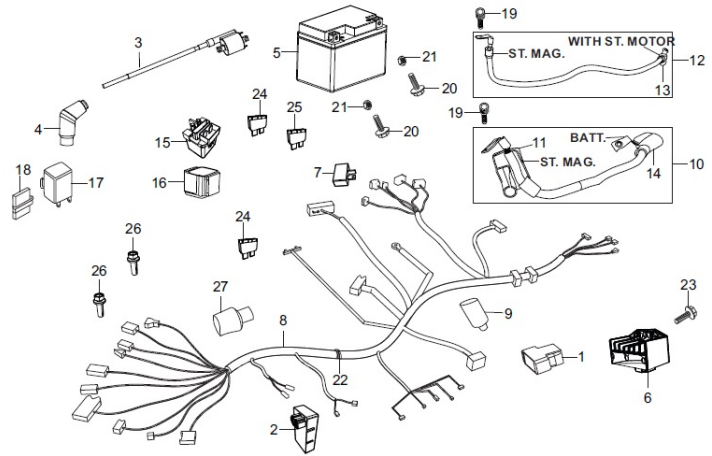


Service Item	F.R.T.	Group Number: F-23 Model :: ECO 125 (Feb, 2020)			
		Ref No.	Part Number	Description	Req.
		1	3370A-AAG-401	UNIT TAIL LIGHT(W/O BULB)	1
		2	33702-KTC-A20	CUSHION TAIL LIGHT	2
		3	33703-AAG-H21	LENS COMP TAIL LIGHT	1
		4	33704-KTC-910	BASE COMP., TAIL LIGHT	1
		5	33705-KTC-901	PACKING, LENS	1
		6	33705-KW7-900	RUBBER A TAIL LIGHT MOUNT	1
		7	34906-AAN-601	BULB TAIL & STOP (12V-21/5W)E-MARK	1
		8	61104-KM7-910	COLLAR,FAIRING	2
		9	92000-05022-0A	BOLT, HEX, 5X22	2
		10	93903-34480	SCREW, TAPPING, 4X 16	2

# F-24-WITH-VISOR

WIRE HARNESS (VISOR)

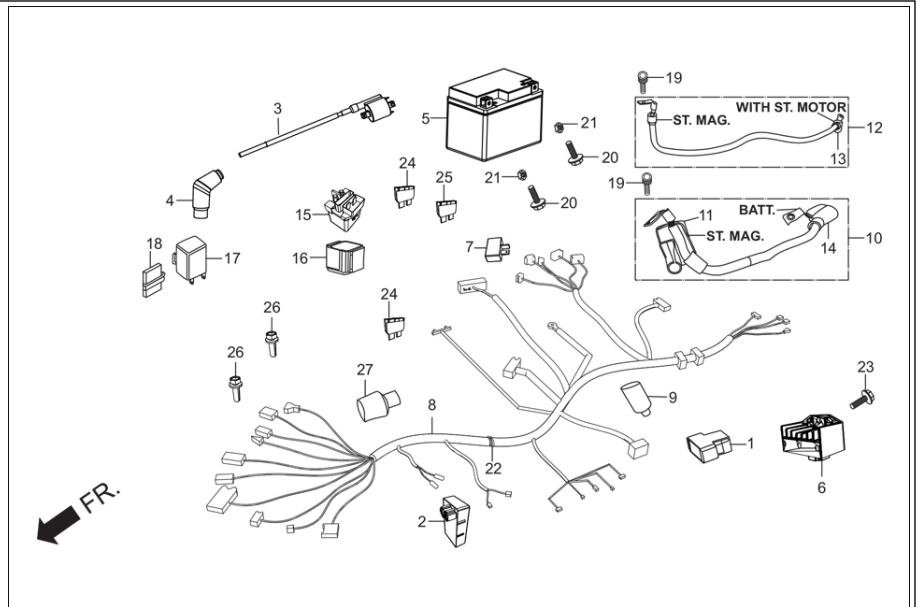
← FR.



Service Item	F.R.T.	Group Number: F-24-WITH-VISOR Model :: ECO 125 (Feb, 2020)			
		Ref No.	Part Number	Description	Req.
		1	30401-KTE-910	CUSHION, C.D.I. UNIT	1
		2	30410-AAG-501	UNIT COMP CDI	1
		3	30500-AAG-H21	COIL ASSY IGN	1
		4	30700-KTC-A21	CAP ASSY., NOISE SUPPRESSOR	1
		5	31500-KVT-801	BATTERY, ASSY.	1
		6	31600-AAN-202	REG. REC. COMP	1
			31600-KTR-A01	REGULATOR, RECTIFIER COMP.,	1
		7	31700-124-000	RECTIFIER ASSY., SILICON	1
		8	32100-AAG-C30	HARNESS, WIRE (VISOR)	1
		9	32108-344-820	COVER, CONNECTOR	1
		10	32401-KTR-A00	CABLE, ST. MAG. BATT.	1
		11	32406-MAK-000	COVER, ST.MAG.TERMINAL	1
		12	32410-KTR-A00	CABLE, START MOTOR	1
		13	32411-253-000	COVER, STARTING MOTOR	1
		14	32417-KTR-A10	COVER, BAT. TERMINAL	1
		15	35850-KR3-870	SWITCH ASSY., START MAG.	1
			35850-AAM-H01	SW ASSY. START MAG	1
		16	35856-KBG-007	RUBBER,SHOCK	1
		17	38301-KWA-931	RELAY COMP WINKER	1
		18	38306-GE7-000	SUSPENSION, WINKER RELAY	1
		19	90111-MR5-000	BOLT, SOCKET, 5X9	2
		20	90122-KVT-941	BOLT BATTERY TERMINAL	2
		21	90306-KVT-941	NUT BATTERY TERMINAL	2
		22	90672-KPL-901	BODY, CLIP	1
		23	95701-06016-00	BOLT, FLANGE, 6X16	1
		24	98200-31500	BLADE, FUSE, 15A	2
		25	98200-32000	BLADE, FUSE, 20A	1
		26	90107-GZ4-670	BOLT, BREAK OFF	2

27	32108-GW6-700	COVER ,CONNECTOR	1
----	---------------	------------------	---

**F-24A-WO-VISOR**  
WIRE HARNESS (W/O VISOR)

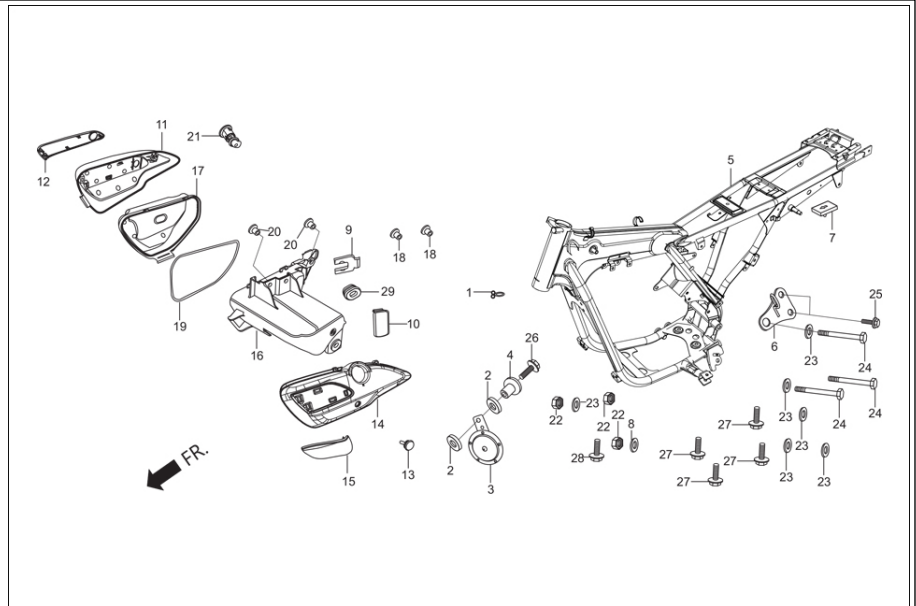




Service Item	F.R.T.	Group Number: F-24A-WO-VISOR Model :: ECO 125 (Feb, 2020)			
		Ref No.	Part Number	Description	Req.
		1	30401-KTE-910	CUSHION, C.D.I. UNIT	1
		2	30410-AAG-501	UNIT COMP CDI	1
		3	30500-AAG-H21	COIL ASSY IGN	1
		4	30700-KTC-A21	CAP ASSY., NOISE SUPPRESSOR	1
		5	31500-KVT-801	BATTERY, ASSY.	1
		6	31600-AAN-202	REG. REC. COMP	1
			31600-KTR-A01	REGULATOR, RECTIFIER COMP.,	1
		7	31700-124-000	RECTIFIER ASSY., SILICON	1
		8	32100-AAG-C00	HARNESS, WIRE (W/O VISOR)	1
		9	32108-344-820	COVER, CONNECTOR	1
		10	32401-KTR-A00	CABLE, ST. MAG. BATT.	1
		11	32406-MAK-000	COVER, ST.MAG.TERMINAL	1
		12	32410-KTR-A00	CABLE, START MOTOR	1
		13	32411-253-000	COVER, STARTING MOTOR	1
		14	32417-KTR-A10	COVER, BAT. TERMINAL	1
		15	35850-KR3-870	SWITCH ASSY., START MAG.	1
			35850-AAM-H01	SW ASSY. START MAG	1
		16	35856-KBG-007	RUBBER,SHOCK	1
		17	38301-KWA-931	RELAY COMP WINKER	1
		18	38306-GE7-000	SUSPENSION, WINKER RELAY	1
		19	90111-MR5-000	BOLT, SOCKET, 5X9	2
		20	90122-KVT-941	BOLT BATTERY TERMINAL	2
		21	90306-KVT-941	NUT BATTERY TERMINAL	2
		22	90672-KPL-901	BODY, CLIP	1
		23	95701-06016-00	BOLT, FLANGE, 6X16	1
		24	98200-31500	BLADE, FUSE, 15A	2
		25	98200-32000	BLADE, FUSE, 20A	1
		26	90107-GZ4-670	BOLT, BREAK OFF	2

27	32108-GW6-700	COVER ,CONNECTOR	1
----	---------------	------------------	---

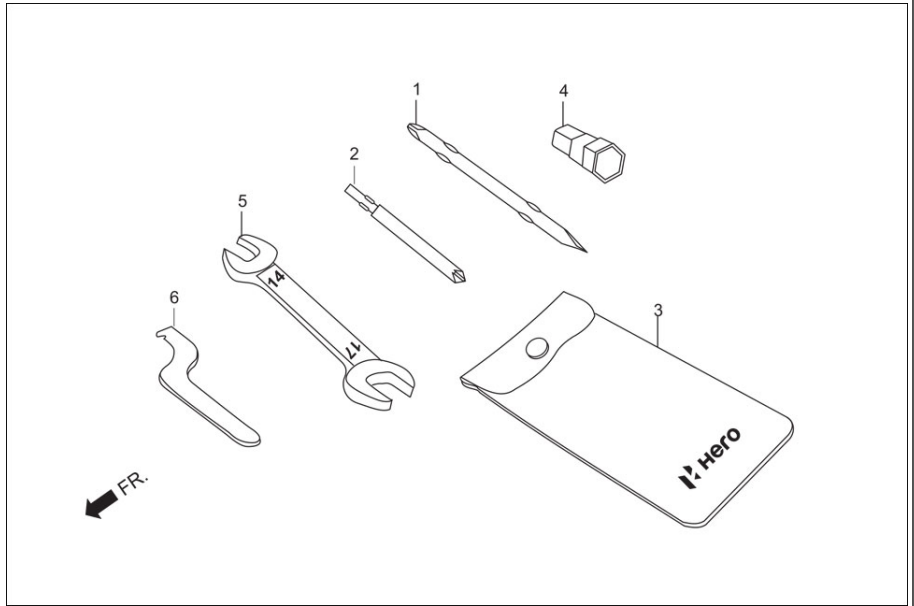
**F-25**  
FRAME BODY/UTILITY BOX



Service Item	F.R.T.	Group Number: F-25 Model :: ECO 125 (Feb, 2020)			
		Ref No.	Part Number	Description	Req.
		1	17369-198-770	CLIP BREATHER TUBE	1
		2	33714-KL3-620	RUBBER, TAIL LIGHT	2
		3	38110-AAN-601	HORN COMP	1
		4	38117-KFE-701	COLLAR, HORN SET	1
		5	50100-AAG-C00	FRAME BODY COMP,	1
		6	50211-KTR-A00	BRACKET, ENGINE HANGER	1
		7	50225-KTC-900	RUBBER, SEAT CUSHION	1
		8	61107-KK6-000	WASHER, 6MM	1
		9	75581-673-000	SET SPRING, LOCK KEY	1
		10	83511-KTC-900	COVER, UTILITY BOX KEY	1
		11	83512-KTC-A20	COVER, R UTILITY BOX	1
		12	83513-AAG-400	ORNAMENT LID R. UTILITY BOX	1
		13	83514-KTC-A20	CAP HOLE	1
		14	83515-AAG-000	COVER L UTILITY BOX	1
		15	83516-AAG-400	ORNAMENT LID L. UTILITY BOX	1
		16	83517-KTC-A20	UTILITY BOX COMP.,	1
		17	83518-KTC-A20	COVER,R INNER UTILITY BOX	1
		18	83518-KVH-900	COLLAR, UTILITY BOX	2
		19	83519-KTC-A20	SEAL, UTILITY BOX	1
		20	83520-KTC-900	COLLAR, UTILITY BOX	2
		21	83550-KTC-H01	LOCK SIDE COVER	1
		22	94030-10000	NUT HEX., 10MM	3
		23	94101-10000	WASHER, PLAIN, 10 MM	6
		24	95301-10110-00	BOLT, HEX., 10 X 110	3
		25	90121-AAD-500	BOLT FLANGE 8 X 16	2
		26	95701-06020-07	BOLT, FLANGE, 6 X 20	1
		27	95701-08016-00	BOLT, FLANGE, 8X16	4
		28	95701-06016-07	BOLT, FLANGE, 6 X 16	1

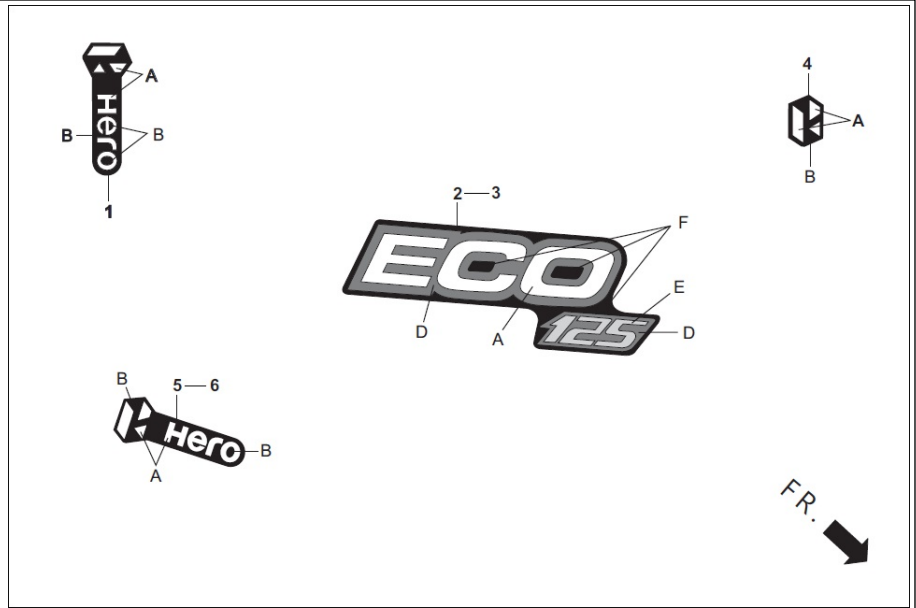
29	83551-300-000	GROMMET, AIR CLEANER CASE	1
----	---------------	---------------------------	---

**F-26  
TOOLS**



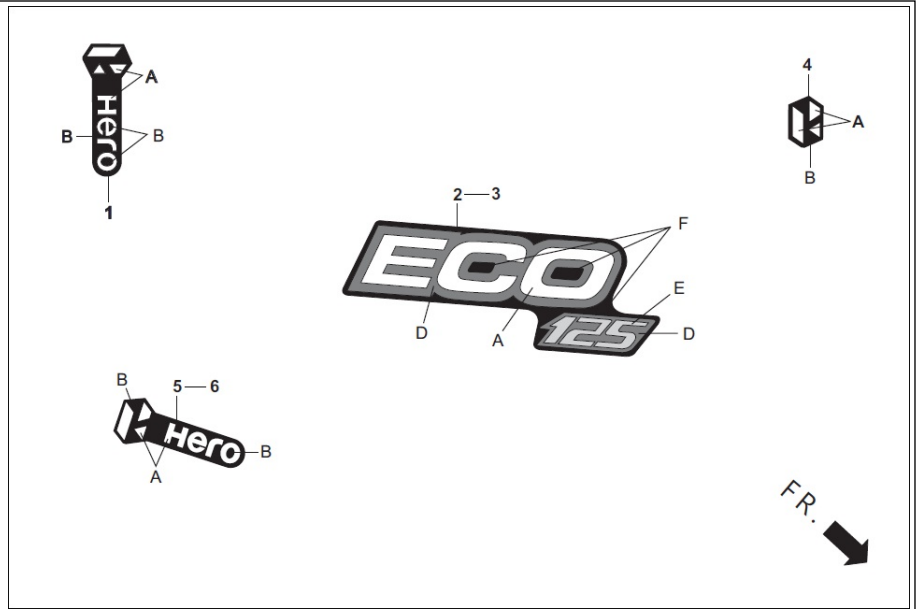
Service Item	F.R.T.	Group Number: F-26 Model :: ECO 125 (Feb, 2020)			
		Ref No.	Part Number	Description	Req.
		1	89102-KTC-900	DRIVER NO. 2, PLUS-MINUS	1
		2	89102-AAC-000	NO.3 CROSS POINT SCREW DRIVER	1
		3	89216-AAD-H00	TOOL BAG	1
		4	89216-KTC-900	WRENCH, SPARKING PLUG	1
		5	99001-14170	SPANNER, 14 X 17	1
		6	99007-45000	PIN, SPANNER	1

**F-27**  
STRIPES/MARKS



Service Item	F.R.T.	Group Number: F-27 Model :: ECO 125 (Feb, 2020)			
		Ref No.	Part Number	Description	Req.
		1	77238-AAG-C00R	H HERO MARK CENTER RR COWL (TYPE-1)	1

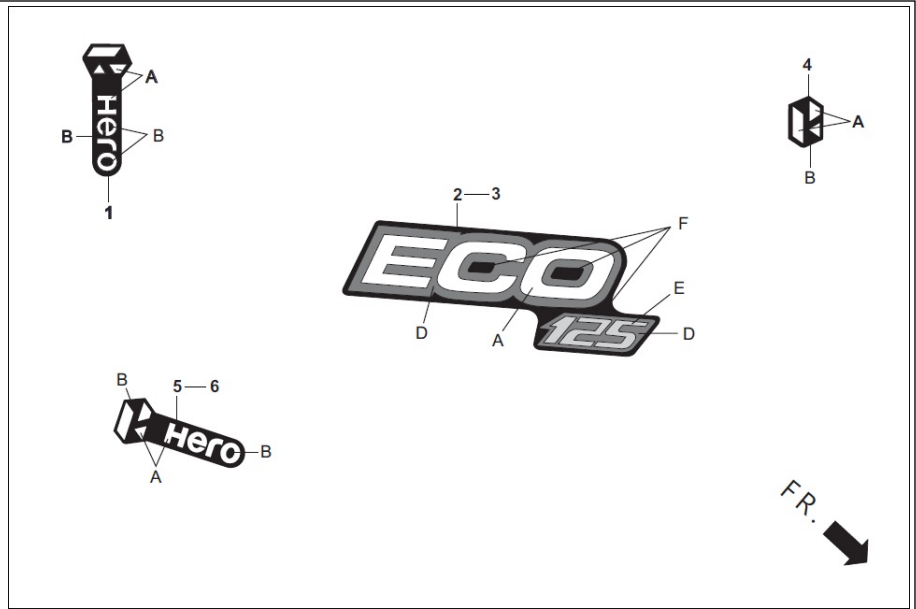
**F-27**  
STRIPES/MARKS



Service Item	F.R.T.	Group Number: F-27 Model :: ECO 125 (Feb, 2020)			
		Ref No.	Part Number	Description	Req.
		2	86175-AAG-C00R	STRIPE A, R FUEL TANK (TYPE-1)	1
			86175-AAG-C00T	STRIPE A, R FUEL TANK (TYPE-2)	1

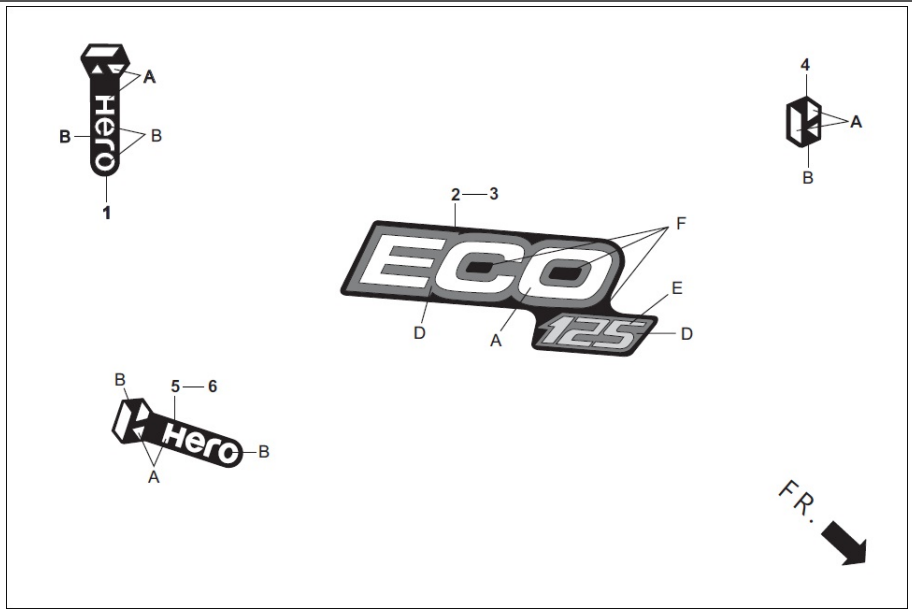


**F-27**  
STRIPES/MARKS



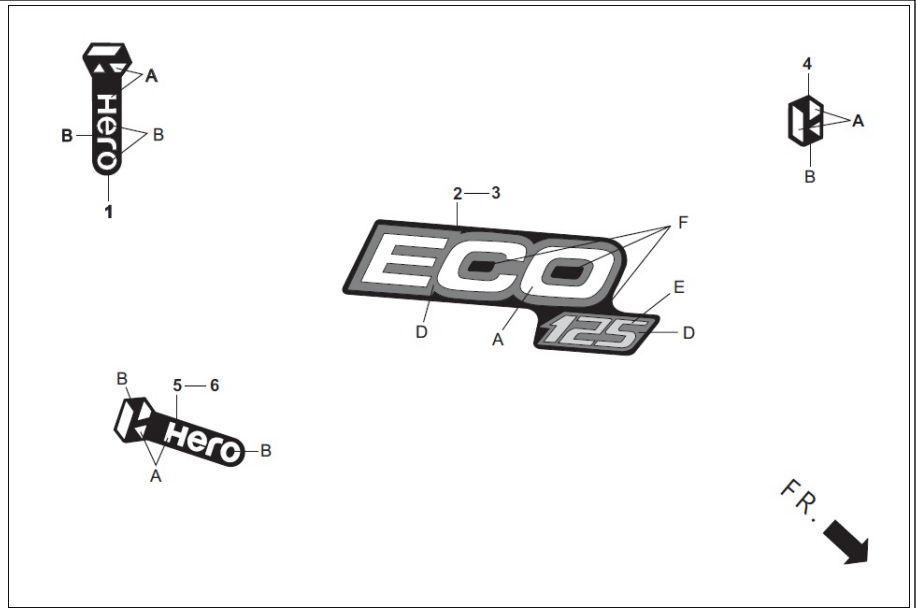
Service Item	F.R.T.	Group Number: F-27 Model :: ECO 125 (Feb, 2020)			
		Ref No.	Part Number	Description	Req.
		3	86176-AAG-C00R	STRIPE A, L FUEL TANK (TYPE-1)	1
			86176-AAG-C00T	STRIPE A, L FUEL TANK (TYPE-2)	1

**F-27**  
STRIPES/MARKS



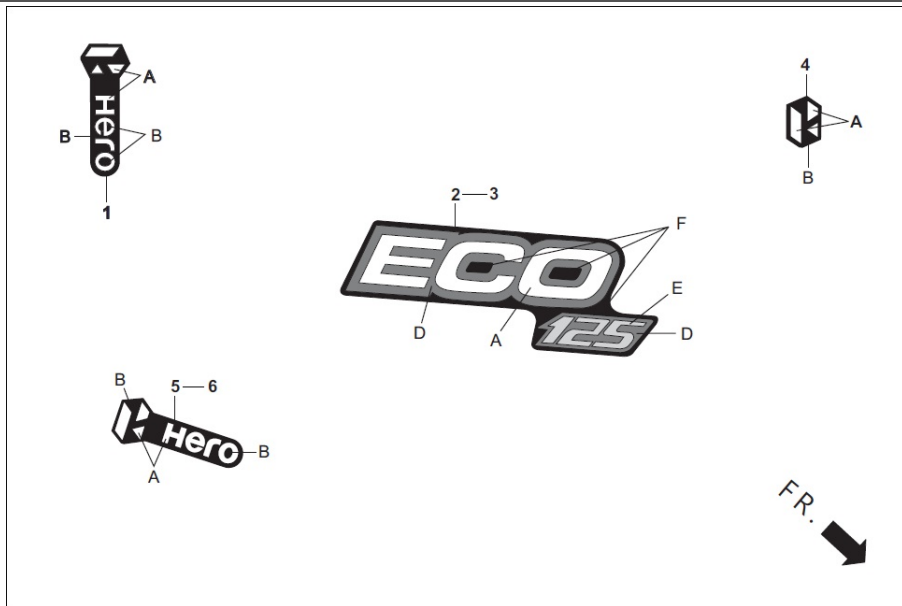
Service Item	F.R.T.	Group Number: F-27 Model :: ECO 125 (Feb, 2020)			
		Ref No.	Part Number	Description	Req.
		4	77237-AAG-C00R	H MARK WIND SCREEN (TYPE-1)	1

**F-27**  
STRIPES/MARKS



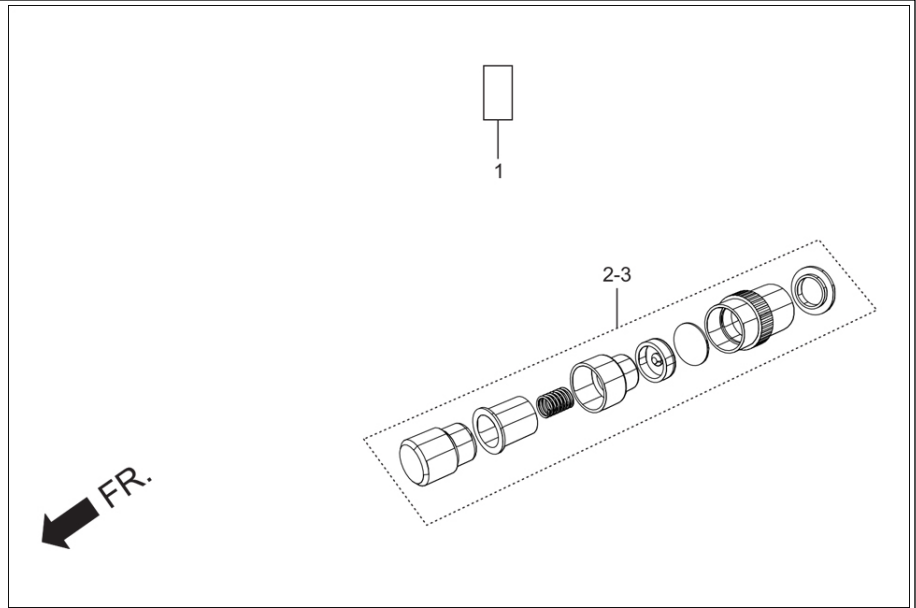
Service Item	F.R.T.	Group Number: F-27 Model :: ECO 125 (Feb, 2020)		
Ref No.	Part Number	Description	Req.	
5	86831-AAG-C00R	H HERO MARK R SIDE COVER (TYPE-1)	1	

**F-27**  
STRIPES/MARKS



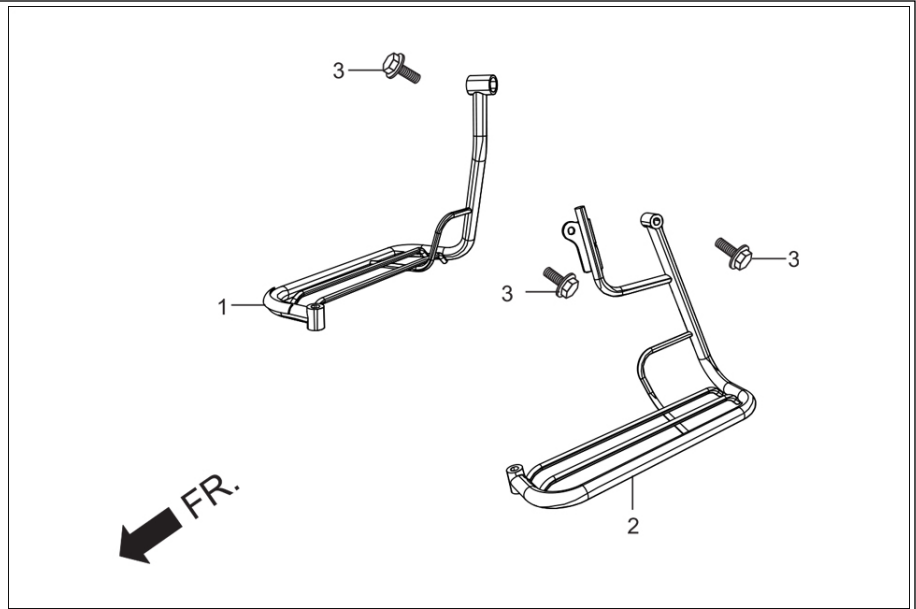
Service Item	F.R.T.	Group Number: F-27 Model :: ECO 125 (Feb, 2020)			
		Ref No.	Part Number	Description	Req.
		6	86832-AAG-C00R	H HERO MARK L SIDE COVER (TYPE-1)	1

**F-28**  
COVER SEAT / TPMS ASSY (OPTIONAL)



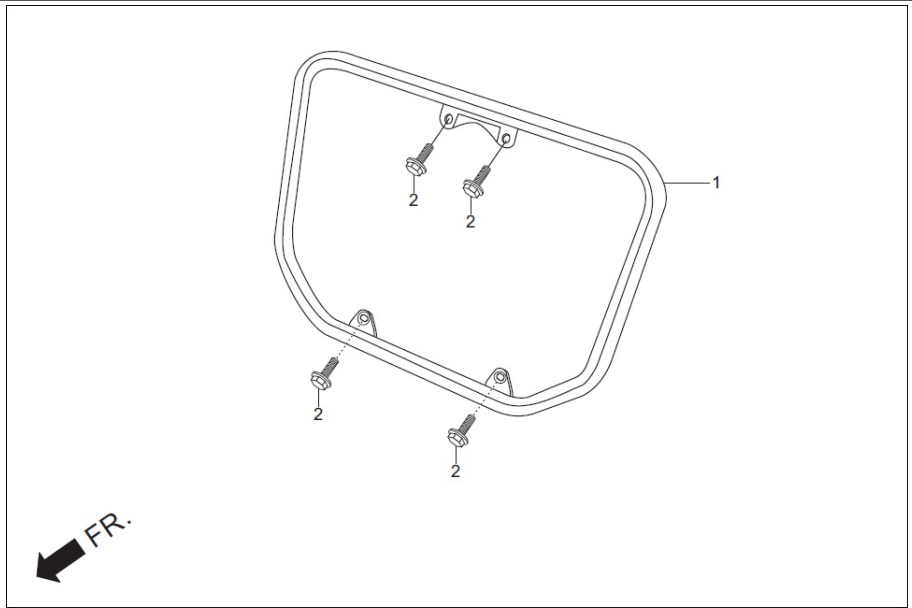
Service Item	F.R.T.	Group Number: F-28 Model :: ECO 125 (Feb, 2020)			
		Ref No.	Part Number	Description	Req.
		1	7720B-AAG-C00	COVER SEAT ASSY DOUBLE	1
		2	44717-AAN-410	TPMS ASSY 25 PSI	1
		3	42717-AAH-A00	TPMS ASSY 41 PSI	1

**F-29**  
GUARD SARI



Service Item	F.R.T.	Group Number: F-29 Model :: ECO 125 (Feb, 2020)			
		Ref No.	Part Number	Description	Req.
		1	51102-AAG-000	STEP COMP R P DOUBLE	1
		2	51202-AAG-C00	STEP COMP, LPILLION DOUBLE	1
		3	95701-08016-00	BOLT, FLANGE, 8X16	3

**F-29A**  
GUARD ENGINE



Service Item	F.R.T.	Group Number: F-29A Model :: ECO 125 (Feb, 2020)			
		Ref No.	Part Number	Description	Req.
		1	50803-KTC-900	GUARD, ENGINE	1
		2	95701-08016-00	BOLT, FLANGE, 8X16	4





# **PARTS INDEX**

<b>PART NO</b>	<b>BLOCK</b>	<b>PART NO</b>	<b>BLOCK</b>
2830A-KTR-840	F-17	14560-KSP-910	E-4
3310B-AAJ-H02	F-1-WITH-VISOR	14610-KPH-900	E-4
3310B-AAJ-H02	F-1A-WO-VISOR	14711-KTC-900	E-3
3340B-AAG-401	F-22	14721-KTC-900	E-3
3345B-AAG-401	F-22	14751-KPH-900	E-3
3360B-AAG-401	F-22	14771-GB4-680	E-3
3365B-AAG-401	F-22	14775-KFM-900	E-3
3370A-AAG-401	F-23	14776-KPH-900	E-3
6130A-AAM-300	F-1-WITH-VISOR	14781-MA6-000	E-3
6130A-KST-940	F-1A-WO-VISOR	15100-KTC-900	E-8A
7720B-AAG-C00	F-28	15341-KTC-900	E-9
11100-AAG-400	E-8	15421-035-010	E-8A
11133-KPH-900	E-5	15431-KTC-901	E-6
11200-KTR-H90	E-8	15441-KTC-900A	E-5
11208-KTC-900	E-9	15441-KTC-900	E-6
11215-KTC-901	E-8	15441-KTC-900A	E-6
11216-KTC-901	E-8	15441-KTC-900A	E-10
11217-KTC-901	E-8	15611-KTC-900	E-5
11330-AAG-400	E-5	15661-KTC-900	E-5
11341-AAG-400	E-7	16010-KWS-901	E-13
11360-KTR-H00	E-7	16012-KTC-A21	E-13
11394-KPH-901	E-5	16013-KRB-901	E-13
11394-AAG-101	E-8	16014-KTR-A01	E-13
11395-KPH-901	E-7	16015-KTR-A01	E-13
11395-AAG-101	E-7	16016-KPH-651	E-13
12100-KTR-H80	E-2	16022-KTR-A01	E-13
12191-AAG-101	E-1	16028-KTT-901	E-13
12191-KPH-901	E-2	16037-KPH-901	E-13
12200-AAG-400	E-1	16075-KTC-901	E-13

12209-AAN-410	E-3	16076-KPL-901	E-13
12211-KPH-900	E-3	16100-AAG-001	E-13
12213-KSP-910	E-1	16118-KTR-A01	E-13
12237-KPH-305	E-1	16148-KPL-901	E-13
12251-KPH-901	E-1	16155-KRS-861	E-13
12341-KTR-H80	E-1	16163-KWS-901	E-13
12361-KTR-A00	E-1	16165-KTR-A01	E-13
12395-KPH-901	E-1	16173-001-000	F-13
12395-AAG-101	E-1	16199-KCP-J01	E-13
13000-AAG-100	E-9	16201-KTR-A00	E-1
13011-KTC-305	E-9	16211-KTC-900	E-1
13021-KTC-305	E-9	16236-KTC-900	E-7
13031-KTC-305	E-9	16950-AAG-400099	F-13
13041-KTC-305	E-9	16955-AAG-000	F-13
13051-KTC-305	E-9	16958-397-770	F-13
13101-KTC-900	E-9	16959-HB3-000	F-13
13102-KTC-305	E-9	16967-MA2-770	F-13
13103-KTC-305	E-9	17110-AAG-400	E-1
13104-KTC-305	E-9	17210-KWA-840	F-15
13105-KTC-305	E-9	17211-AAG-400	F-15
13111-087-000	E-9	17212-AAG-400	F-15
13115-001-000	E-9	17213-AAG-400	F-15
13201-KFL-850	E-9	17214-KWA-840	F-15
13322-KTC-900	E-9	17218-KTC-900	F-15
13381-KPH-900	E-9	17219-KTC-900	F-15
14100-KTC-900	E-3	17220-KTC-900H	F-15
14311-KPH-900	E-9	17221-KA4-300	F-16
14321-AAG-400	E-4	17225-KWA-840	F-15
14401-AAG-00099	E-4	17234-KTC-900	F-15
14430-KTC-900	E-3	17234-KCC-940	F-15

14451-KTC-900	E-3	17235-KTC-900	F-15
14452-KTC-900	E-3	17251-KTC-900	F-15
14510-KTC-901	E-4	17253-KTC-900	F-15
14515-KTC-901	E-4	17365-KTC-900	F-15
14520-KTC-902	E-4	17369-198-770	F-25

<b>PART NO</b>	<b>BLOCK</b>	<b>PART NO</b>	<b>BLOCK</b>
17505-AAG-C10R	F-13	28132-KPH-900	E-7A
17505-AAG-C10T	F-13	28133-KPH-900	E-7A
17505-AAG-C10U	F-13	28211-KTC-900	E-11
17512-KCC-900	F-12	28221-KTC-900	E-11
17517-KTC-A20	F-13	28251-KTC-900	E-11
17518-KTC-A20	F-13	28262-KTC-900	E-11
17611-KTR-A00	F-13	28265-KPH-900	E-11
17613-KTR-A00	F-13	28271-KPH-900	E-11
17620-KST-H61	F-13	28281-KPH-900	E-11
17681-KTC-900	F-13	28282-KPH-900	E-11
17910-KTR-A00	F-3	28293-KAG-900	F-17
18291-KTR-A00	F-16	28302-KTR-840	F-17
18345-KST-940	F-16	28321-KTC-900	F-17
18350-AAG-000	F-16	28333-124-000	F-17
18351-KTR-A20	F-16	30401-KTE-910	F-24-WITH-VISOR
18651-KST-900	F-15	30401-KTE-910	F-24A-WO-VISOR
22100-AAG-501	E-6	30410-AAG-501	F-24-WITH-VISOR
22115-KPG-T00	E-6	30410-AAG-501	F-24A-WO-VISOR
22116-KPG-T00	E-6	30500-AAG-H21	F-24-WITH-VISOR
22121-AAG-501	E-6	30500-AAG-H21	F-24A-WO-VISOR
22201-AAG-501	E-6	30700-KTC-A21	F-24-WITH-VISOR
22205-AAG-501	E-6	30700-KTC-A21	F-24A-WO-VISOR
22321-AAG-501	E-6	31100-AAN-201	E-7A
22350-AAG-501	E-6	31110-AAN-201	E-7A
22361-AAG-501	E-6	31120-KTR-A01	E-7A
22401-AAG-501	E-6	31200-KTC-921	E-7B
22810-KTC-900	E-5	31201-KPT-A01	E-7B
22815-166-000	E-5	31204-KG8-004	E-7B
22821-KTC-940	E-5	31205-KTC-921	E-7B

22847-KCC-900	E-5	31206-KPH-881	E-7B
22870-KTC-A00	F-3	31207-MBE-008	E-7B
22871-116-670	F-3	31304-AAG-C30	F-3
23123-KGH-900	E-6	31306-AAE-111	F-3
23125-KTC-901	E-6	31500-KVT-801	F-24-WITH-VISOR
23211-KTR-940	E-10	31500-KVT-801	F-24A-WO-VISOR
23221-KTR-940	E-10	31600-AAN-202	F-24-WITH-VISOR
23415-KPH-900	E-10	31600-KTR-A01	F-24-WITH-VISOR
23421-KTC-900	E-10	31600-AAN-202	F-24A-WO-VISOR
23431-KPH-900	E-10	31600-KTR-A01	F-24A-WO-VISOR
23441-KTC-901	E-10	31700-124-000	F-24-WITH-VISOR
23451-KTC-901	E-10	31700-124-000	F-24A-WO-VISOR
23461-KTC-901	E-10	31916-KPH-90099	E-1
23471-KTC-902	E-10	32100-AAG-C30	F-24-WITH-VISOR
23481-KTC-902	E-10	32100-AAG-C00	F-24A-WO-VISOR
23801-GF6-000	E-10	32108-344-820	F-24-WITH-VISOR
23802-GN5-910	E-10	32108-GW6-700	F-24-WITH-VISOR
24211-KTC-900	E-12	32108-344-820	F-24A-WO-VISOR
24212-KTC-900	E-12	32108-GW6-700	F-24A-WO-VISOR
24241-KPH-900	E-12	32161-404-000	F-3
24301-AAN-C00	E-12	32401-KTR-A00	F-24-WITH-VISOR
24410-KTC-900	E-12	32401-KTR-A00	F-24A-WO-VISOR
24421-KTC-900	E-12	32406-MAK-000	F-24-WITH-VISOR
24430-KPH-901	E-12	32406-MAK-000	F-24A-WO-VISOR
24435-KTC-900	E-12	32410-KTR-A00	F-24-WITH-VISOR
24610-AAN-C00	E-12	32410-KTR-A00	F-24A-WO-VISOR
24639-KPG-T00	E-12	32411-253-000	F-24-WITH-VISOR
24641-KTC-900	E-12	32411-253-000	F-24A-WO-VISOR
24651-KTC-900	E-12	32417-KTR-A10	F-24-WITH-VISOR
24652-KPH-900	E-12	32417-KTR-A10	F-24A-WO-VISOR

24701-AAG-C00	F-17	32601-KTR-A00	E-7B
24781-KR3-770	F-17	32961-KPH-900	E-7A
28110-KTC-921	E-7A	33101-KTN-921	F-1-WITH-VISOR
28120-KTR-A00A	E-7A	33101-KTN-921	F-1A-WO-VISOR
28131-KTC-920	E-7A	33108-KRY-900	F-1-WITH-VISOR

<b>PART NO</b>	<b>BLOCK</b>	<b>PART NO</b>	<b>BLOCK</b>
33108-KGA-900	F-1-WITH-VISOR	37612-KCC-900	F-2
33108-KRY-900	F-1A-WO-VISOR	37614-KCC-900	F-2
33108-KGA-900	F-1A-WO-VISOR	37619-KST-951	F-2
33112-KTN-921	F-1-WITH-VISOR	37800-KTC-A21	F-13
33112-KTN-921	F-1A-WO-VISOR	38110-AAN-601	F-25
33120-AAJ-H02	F-1-WITH-VISOR	38117-KFE-701	F-25
33120-AAJ-H02	F-1A-WO-VISOR	38301-KWA-931	F-24-WITH-VISOR
33401-KTR-901	F-22	38301-KWA-931	F-24A-WO-VISOR
33403-KTR-901	F-22	38306-GE7-000	F-24-WITH-VISOR
33406-KTR-901	F-22	38306-GE7-000	F-24A-WO-VISOR
33415-AAG-401	F-22	40510-KTR-940Z	F-19
33451-KTR-901	F-22	40520-KTR-940	F-19
33453-KTR-901	F-22	40530-KCC-900	F-19
33465-AAG-401	F-22	40531-205-010	F-19
33491-KAF-000	F-22	40543-KTR-900	F-11-CAST
33603-KTR-901	F-22	40543-KTR-900	F-11-SPOKE
33615-AAG-401	F-22	40543-KTR-900	F-19
33650-KAF-000	F-22	40545-001-000	F-19
33653-KTR-900	F-22	40546-KPG-T00	F-19
33665-AAG-401	F-22	40546-KTR-900	F-19
33702-KTC-A20	F-23	41201-KTC-900	F-11-CAST
33703-AAG-H21	F-23	41201-KTC-900	F-11-SPOKE
33704-KTC-910	F-23	41241-AAN-410	F-11-CAST
33705-KTC-901	F-23	41241-AAN-410	F-11-SPOKE
33705-KW7-900	F-23	42301-KTR-700	F-11-CAST
33714-KL3-620	F-25	42301-KTR-700	F-11-SPOKE
33741-AAG-B01	F-6	42303-KTR-900	F-11-CAST
33741-KRY-861	F-6	42303-KTR-900	F-11-SPOKE
33741-KST-920	F-21	42304-KTC-900	F-11-CAST



34901-KSP-910	F-1-WITH-VISOR	42304-KTC-900	F-11-SPOKE
34901-KSP-910	F-1-WITH-VISOR	42313-198-900	F-10-CAST
34901-KSP-910	F-1A-WO-VISOR	42313-198-900	F-10-SPOKE
34901-KSP-910	F-1A-WO-VISOR	42601-AAC-H00	F-11-CAST
34904-AAM-301	F-22	42601-KTR-940Z	F-11-SPOKE
34906-AAN-601	F-23	42603-198-900	F-9-SPOKE
34908-KVE-900	F-2	42603-198-900	F-11-SPOKE
34909-KVE-900	F-2	42611-KTC-900	F-11-CAST
35010-AAG-C00	F-2	42611-KTC-900	F-11-SPOKE
35100-AAG-001	F-2	42615-198-900	F-11-CAST
35106-KTC-900	F-2	42615-198-900	F-11-SPOKE
35121-AAC-H30	F-2	42620-KTR-700	F-11-CAST
35122-AAC-H30	F-2	42620-KTR-940	F-11-SPOKE
35150-AAG-H20	F-3	42711-KST-940	F-11-CAST
35200-KST-870	F-3	42711-KST-940	F-11-SPOKE
35330-413-003	F-3	42713-KFN-850	F-9-SPOKE
35340-KTC-A21	F-3	42713-KFN-850	F-11-SPOKE
35350-KTR-A00	F-18	42717-AAH-A00	F-28
35357-KCC-900	F-18	43100-KTR-700	F-10-CAST
35751-KPH-900	E-12	43100-KTC-900	F-10-SPOKE
35752-KRM-840	E-12	43141-KTC-900	F-10-CAST
35759-KTR-A01	E-8	43141-KTC-900	F-10-SPOKE
35850-KR3-870	F-24-WITH-VISOR	43410-KCT-690	F-10-CAST
35850-AAM-H01	F-24-WITH-VISOR	43410-KCT-690	F-10-SPOKE
35850-KR3-870	F-24A-WO-VISOR	43431-KTR-900	F-19
35850-AAM-H01	F-24A-WO-VISOR	43434-286-000	F-10-CAST
35856-KBG-007	F-24-WITH-VISOR	43434-286-000	F-10-SPOKE
35856-KBG-007	F-24A-WO-VISOR	43451-KTC-900	F-18
37100-AAG-C00	F-2	44301-KTR-700	F-9-CAST
37210-KST-A20	F-2	44301-KTR-700	F-9-SPOKE

37215-MB6-830	F-2	44311-KRC-900	F-9-CAST
37243-323-000	F-17	44311-KRC-900	F-9-SPOKE
37300-AAG-401	F-2	44601-AAC-H00	F-9-CAST
37350-AAG-C00	F-2	44601-KTR-940Z	F-9-SPOKE
37610-KST-951	F-2	44620-400-000	F-9-CAST

<b>PART NO</b>	<b>BLOCK</b>	<b>PART NO</b>	<b>BLOCK</b>
44620-198-900	F-9-SPOKE	50661-AAJ-H00	F-17
44701-AAC-H00	F-9-SPOKE	50701-AAG-000	F-17
44701-AAC-H00	F-11-SPOKE	50702-AAG-000	F-17
44711-KST-940	F-9-CAST	50720-AAG-H01	F-12
44711-KST-940	F-9-SPOKE	50803-KTC-900	F-29A
44712-KTC-902	F-9-CAST	51102-AAG-000	F-29
44712-KTC-902	F-9-SPOKE	51202-AAG-C00	F-29
44712-KTC-902	F-11-CAST	51400-KWA-941	F-7-WITH-VISOR
44712-KTC-902	F-11-SPOKE	51400-KWA-941	F-7A-WO-VISOR
44717-AAN-410	F-28	51401-KST-941	F-7-WITH-VISOR
44805-KTC-900	F-8-CAST	51401-KST-941	F-7A-WO-VISOR
44805-KTC-900	F-8-SPOKE	51403-KCC-900	F-7-WITH-VISOR
44806-KST-900	F-8-CAST	51403-447-730	F-7-WITH-VISOR
44806-KST-900	F-8-SPOKE	51403-KCC-900	F-7A-WO-VISOR
44809-170-000	F-8-CAST	51403-447-730	F-7A-WO-VISOR
44809-170-000	F-8-SPOKE	51410-KWA-941	F-7-WITH-VISOR
44810-KTC-900	F-8-CAST	51410-KWA-941	F-7A-WO-VISOR
44810-KTC-900	F-8-SPOKE	51412-KAG-900	F-7-WITH-VISOR
44830-AAJ-000	F-2	51412-KWA-941	F-7-WITH-VISOR
44831-KST-940	F-2	51412-KAG-900	F-7A-WO-VISOR
45010-AAC-030	F-8-CAST	51412-KWA-941	F-7A-WO-VISOR
45010-AAD-000	F-8-SPOKE	51420-KWA-941	F-7-WITH-VISOR
45125-AAH-F0099	F-8-CAST	51420-KWA-941	F-7A-WO-VISOR
45125-AAH-F0099	F-8-SPOKE	51425-KST-901	F-7-WITH-VISOR
45125-AAH-F0099	F-10-CAST	51425-KST-901	F-7A-WO-VISOR
45125-AAH-F0099	F-10-SPOKE	51432-KST-901	F-7-WITH-VISOR
45133-KCC-900	F-8-CAST	51432-KST-901	F-7A-WO-VISOR
45133-KCC-900	F-8-SPOKE	51437-KVN-901	F-7-WITH-VISOR
45133-KCC-900	F-10-CAST	51437-KVN-901	F-7A-WO-VISOR

45133-KCC-900	F-10-SPOKE	51440-KTR-901	F-7-WITH-VISOR
45134-250-000	F-8-CAST	51440-KTR-901	F-7A-WO-VISOR
45134-250-000	F-8-SPOKE	51500-KWA-941	F-7-WITH-VISOR
45134-250-000	F-10-CAST	51500-KWA-941	F-7A-WO-VISOR
45134-250-000	F-10-SPOKE	51520-KWA-941	F-7-WITH-VISOR
45141-KTC-900	F-8-CAST	51520-KWA-941	F-7A-WO-VISOR
45141-KTC-900	F-8-SPOKE	51601-KAG-900	F-7-WITH-VISOR
45145-096-650	F-8-CAST	51601-KAG-900	F-7A-WO-VISOR
45145-096-650	F-8-SPOKE	51602-AAG-400	F-7-WITH-VISOR
45145-KFM-900	F-10-CAST	51602-AAG-410R	F-7A-WO-VISOR
45145-KFM-900	F-10-SPOKE	51602-AAG-410T	F-7A-WO-VISOR
45410-KTR-A20	F-8-CAST	51602-AAG-410U	F-7A-WO-VISOR
45410-KTR-A20	F-8-SPOKE	51606-AAG-400	F-7-WITH-VISOR
45435-GB2-720	F-8-CAST	51606-AAG-410R	F-7A-WO-VISOR
45435-GB2-720	F-8-SPOKE	51606-AAG-410T	F-7A-WO-VISOR
45450-KTR-A20	F-3	51606-AAG-410U	F-7A-WO-VISOR
45451-KCC-900	F-6	51622-KAG-900	F-7-WITH-VISOR
46500-AAG-C00	F-18	51622-KAG-900	F-7A-WO-VISOR
46514-KCC-900	F-18	52101-KTC-900	F-19
46515-KB9-000	F-18	52110-KTR-940	F-19
50100-AAG-C00	F-25	52147-KTC-900	F-19
50160-KTC-900	F-17	52170-KTR-900	F-19
50181-KTR-940	F-16	52400-AAG-400	F-20
50211-KTR-A00	F-25	52410-KTC-A21	F-20
50225-KTC-900	F-25	52486-056-000	F-20
50301-KTR-900	F-5	52486-KAG-900	F-20
50500-KTR-A00	F-18	52489-399-600	F-20
50505-KCC-900	F-16	52495-098-000	F-20
50512-KTC-900	F-18	53100-KTC-900	F-4
50530-KCC-900	F-17	53132-124-000	F-4

50603-KB4-000	F-17	53133-198-900	F-4
50614-413-000	F-17	53134-028-000	F-4
50618-KCC-000	F-17	53135-198-900	F-4
50619-KCC-000	F-17	53136-198-900	F-4
50619-425-010	F-17	53140-KTC-900	F-3

<b>PART NO</b>	<b>BLOCK</b>	<b>PART NO</b>	<b>BLOCK</b>
53166-KTC-900	F-3	83518-KTC-A20	F-25
53168-166-000	F-3	83518-KVH-900	F-25
53171-KCC-900	F-3	83519-KTC-A20	F-25
53172-KTC-920	F-3	83520-KTC-900	F-25
53173-AAH-000	F-3	83550-KTC-H01	F-14
53175-AAF-H00	F-3	83550-KTC-H01	F-25
53178-AAF-H00	F-3	83551-300-000	F-12
53179-KTC-900	F-3	83551-300-000	F-13
53200-KTC-A20	F-5	83551-300-000	F-25
53208-AAH-000	F-4	83600-AAG-C00R	F-14
53211-268-010	F-5	84103-KCC-900	F-12
53212-200-000	F-5	84701-KTC-900	F-21
53214-200-000	F-5	84701-P26-D00A	F-21
53215-KTR-900	F-5	84702-KCC-900	F-12
53221-KTR-900	F-5	84702-KCC-900	F-21
53222-KTR-900	F-5	86175-AAG-C00R	F-27
53230-KTR-940	F-4	86175-AAG-C00T	F-27
61100-AAG-300	F-6	86176-AAG-C00R	F-27
61102-KTC-900	F-6	86176-AAG-C00T	F-27
61103-KTR-940	F-6	86831-AAG-C00R	F-27
61103-357-000	F-21	86832-AAG-C00R	F-27
61104-KTR-940	F-6	87507-KPH-740	F-30
61104-KM7-910	F-23	87560-AAG-C01	F-30
61105-KTC-900	F-6	88110-AAJ-500	F-3
61107-KK6-000	F-21	88120-AAJ-500	F-3
61107-KK6-000	F-25	89102-KTC-900	F-26
61301-AAG-400R	F-1-WITH-VISOR	89102-AAC-000	F-26
61301-AAM-300S	F-1-WITH-VISOR	89216-AAD-H00	F-26
61301-AAG-400U	F-1-WITH-VISOR	89216-KTC-900	F-26

61302-471-000	F-1-WITH-VISOR	90001-KTC-900	E-8
61302-471-000	F-1A-WO-VISOR	90005-KY7-000	E-4
61303-198-D00	F-1-WITH-VISOR	90012-333-000R	E-3
61303-198-D00	F-1A-WO-VISOR	90022-MG8-000	E-12
61304-KST-940	F-1-WITH-VISOR	90031-KTC-900	E-8
61304-KST-940	F-1A-WO-VISOR	90032-KTC-900	E-8
61311-AAG-400	F-2	90032-KST-950	F-2
64100-AAG-C00R	F-1-WITH-VISOR	90033-KTC-900	E-8
75581-673-000	F-14	90035-KST-900	F-2
75581-673-000	F-25	90050-KFL-850	E-6
77200-AAG-C10	F-12	90071-MB0-000	E-7B
77202-KCC-900	F-12	90083-KVH-900	E-4
77202-KCC-900	F-21	90084-KTC-A20	E-7
77204-KCC-900	F-12	90085-KTC-920	E-7A
77206-AAG-000	F-12	90101-GE0-000	F-12
77206-KCC-900	F-12	90101-GE0-000	F-14
77235-AAG-C00R	F-12	90101-KWA-830	F-15
77237-AAG-C00R	F-27	90107-KST-940	F-16
77238-AAG-C00R	F-27	90107-GN1-010	F-17
77246-AAG-000R	F-12	90107-GZ4-670	F-24-WITH-VISOR
77256-AAG-000R	F-12	90107-GZ4-670	F-24A-WO-VISOR
80100-AAG-000	F-21	90108-GN2-000	F-2
80101-443-000	F-2	90111-187-000	F-15
80151-KTC-900	F-21	90111-MR5-000	F-24-WITH-VISOR
81200-AAG-C00	F-12	90111-MR5-000	F-24A-WO-VISOR
83402-AAG-430	F-1-WITH-VISOR	90114-310-000	F-3
83407-KTR-940	F-15	90116-KAG-900	F-7-WITH-VISOR
83500-AAG-C00R	F-14	90116-KAG-900	F-7A-WO-VISOR
83511-KTC-900	F-25	90117-065-000	F-4
83512-KTC-A20	F-25	90118-383-000	F-19

83513-AAG-400	F-25	90121-AAD-500	F-25
83514-KTC-A20	F-25	90122-KVT-941	F-24-WITH-VISOR
83515-AAG-000	F-25	90122-KVT-941	F-24A-WO-VISOR
83516-AAG-400	F-25	90123-KST-941	F-7-WITH-VISOR
83517-KTC-A20	F-25	90123-KRM-860	F-7-WITH-VISOR



<b>PART NO</b>	<b>BLOCK</b>	<b>PART NO</b>	<b>BLOCK</b>
90123-KST-941	F-7A-WO-VISOR	90551-178-000	F-20
90123-KRM-860	F-7A-WO-VISOR	90558-KTR-900	F-19
90133-331-770	F-19	90559-KTR-900	F-19
90183-KTC-900	F-19	90563-355-000	F-12
90201-KST-900	F-3	90563-355-000	F-21
90206-001-000	E-3	90601-AAB-A00	E-10
90231-087-010	E-6	90601-GF5-730	F-7-WITH-VISOR
90231-KM7-700	E-6	90601-GF5-730	F-7A-WO-VISOR
90301-473-000	F-10-CAST	90605-200-000	E-10
90301-473-000	F-10-SPOKE	90605-200-000	E-11
90302-KTE-911	F-6	90672-KPL-901	F-24-WITH-VISOR
90302-KTE-911	F-10-CAST	90672-KPL-901	F-24A-WO-VISOR
90302-KTE-911	F-10-SPOKE	90702-GB6-910	E-3
90302-KBP-900	F-11-CAST	90702-GB6-910	E-5
90302-KBP-900	F-11-SPOKE	90702-GB6-910	E-7
90302-KBP-900	F-19	90702-GB6-910	E-8A
90304-AAH-000	F-4	90741-KFB-000	E-9
90304-GA6-000	F-4	90741-KGH-900	E-9
90304-KPH-900	F-16	90753-029-000	F-11-CAST
90306-KST-942	F-9-CAST	90753-029-000	F-11-SPOKE
90306-KST-942	F-9-SPOKE	90810-KCC-910	F-1-WITH-VISOR
90306-KTE-911	F-11-CAST	91001-KTC-900	E-9
90306-KTE-911	F-11-SPOKE	91002-KTC-901	E-9
90306-KST-942	F-19	91007-KPH-901	E-5
90306-KVT-941	F-24-WITH-VISOR	91071-KTC-900	E-7A
90306-KVT-941	F-24A-WO-VISOR	91101-AAC-H40	E-9
90307-001-000	F-11-CAST	91102-AAC-H40	E-9
90307-001-000	F-11-SPOKE	91103-AAC-H40	E-9
90309-357-000	F-11-CAST	91105-KTC-900	E-3

90309-357-000	F-11-SPOKE	91204-MC7-003	E-5
90311-MT3-000	F-15	91204-KPH-901	E-10
90320-GC3-000	F-12	91208-KPH-901	E-8
90320-GC3-000	F-21	91251-GK4-000	F-8-CAST
90324-KCC-900	F-13	91251-GK4-000	F-8-SPOKE
90325-KCC-900	F-13	91251-KPH-901	F-9-CAST
90380-MB2-000	F-22	91251-KPH-901	F-9-SPOKE
90381-KWA-940	F-14	91255-KWA-941	F-7-WITH-VISOR
90403-AAG-501	E-6	91255-KWA-941	F-7A-WO-VISOR
90407-259-000	E-8	91301-KTC-900	E-6
90412-187-000	E-10	91303-719-000	E-5
90412-KPH-900	E-10	91303-377-000	E-7
90432-086-000	E-6	91304-KPG-T00	E-1
90435-HB3-000	E-12	91304-704-000	F-11-CAST
90439-SB2-010	E-7A	91304-704-000	F-11-SPOKE
90441-286-000	E-1	91305-KPH-900	E-8
90441-ME9-000	E-1	91305-443-740	F-13
90441-KA4-700	E-10	91306-MG3-000	E-4
90443-107-000	E-1	91307-035-000	E-5
90452-KGH-900	E-10	91309-425-003	E-7B
90452-KPH-900	E-11	91320-MB0-000	E-7B
90454-KPH-900	E-11	91352-GAZ-930	F-2
90461-357-000	E-1	91356-KAG-900	F-7-WITH-VISOR
90461-KTC-900	E-10	91356-KAG-900	F-7A-WO-VISOR
90461-GB4-770	E-10	91372-KPH-900	E-1
90463-KRM-840	E-5	91508-KST-940	F-1-WITH-VISOR
90501-GBL-730	E-6	91508-KST-940	F-1A-WO-VISOR
90502-198-900	F-18	92000-06016-0A	F-17
90503-KTR-900	F-4	92000-06020-0A	F-17
90505-425-000	F-10-CAST	92000-06012-0A	F-21

90505-425-000	F-10-SPOKE	92000-05022-0A	F-23
90521-292-000	F-7-WITH-VISOR	92101-06010-0A	E-10
90521-292-000	F-7A-WO-VISOR	92101-08032-0A	F-17
90544-439-930	F-7-WITH-VISOR	92800-12000-00	E-8
90544-439-930	F-7A-WO-VISOR	92811-10000	F-10-CAST

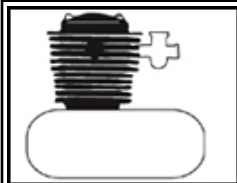
<b>PART NO</b>	<b>BLOCK</b>	<b>PART NO</b>	<b>BLOCK</b>
92811-10000	F-10-SPOKE	95002-80000	F-15
92900-08025-0E	E-1	95005-35310-50	E-13
93500-05020-0G	F-3	95011-51000	F-17
93500-05022-1G	F-3	95014-21101	F-4
93500-04025-0G	F-13	95014-72302	F-17
93500-05016-0A	F-15	95014-71702	F-18
93892-04018-08L	E-13	95014-73100	F-18
93901-04012-00	F-1-WITH-VISOR	95015-32001	F-8-CAST
93901-04012-00	F-1A-WO-VISOR	95015-42000	F-8-CAST
93901-32220	F-3	95015-32001	F-8-SPOKE
93901-22310	F-22	95015-42000	F-8-SPOKE
93903-34380	F-1-WITH-VISOR	95015-32001	F-18
93903-24310	F-12	95015-42000	F-18
93903-34480	F-22	95015-53000	F-18
93903-34480	F-23	95018-46320	F-15
94001-06070-0S	F-2	95301-10110-00	F-25
94001-10070-0S	F-3	95701-06022-00	E-1
94001-05070-0S	F-3	95701-06025-00	E-1
94001-08000-0S	F-10-CAST	95701-06110-00	E-1
94001-08000-0S	F-10-SPOKE	95701-06012-00	E-3
94001-06000-0S	F-19	95701-06012-00	E-5
94001-08000-0S	F-19	95701-06025-00	E-7B
94002-10070-0S	F-3	95701-06016-00	E-8
94002-08000-0S	F-3	95701-06035-00	E-8A
94002-10000-0S	F-20	95701-06016-00	E-9
94002-06000-0S	F-21	95701-08020-02	F-1-WITH-VISOR
94030-10000	F-17	95701-08020-02	F-1A-WO-VISOR
94030-10000	F-25	95701-08040-00	F-5
94050-12000	E-7A	95701-06020-00	F-6

94050-06000	F-3	95701-06032-00	F-8-CAST
94050-06000	F-8-CAST	95701-06032-00	F-8-SPOKE
94050-06000	F-8-SPOKE	95701-06035-00	F-10-CAST
94050-06000	F-13	95701-06035-00	F-10-SPOKE
94050-06000	F-16	95701-08016-00	F-12
94050-10000	F-20	95701-06025-00	F-12
94050-10000	F-22	95701-08035-00	F-13
94101-06000	F-11-CAST	95701-08016-00	F-16
94101-06000	F-11-SPOKE	95701-08016-07	F-17
94101-05000	F-15	95701-10045-07	F-17
94101-06000	F-17	95701-06040-00	F-17
94101-08000	F-17	95701-06020-00	F-21
94101-06000	F-19	95701-06016-00	F-21
94101-08000	F-19	95701-06016-00	F-24-WITH-VISOR
94101-12800	F-20	95701-06016-00	F-24A-WO-VISOR
94101-06000	F-21	95701-06020-07	F-25
94101-10000	F-25	95701-08016-00	F-25
94103-06700	F-2	95701-06016-07	F-25
94111-10000	F-19	95701-08016-00	F-29
94201-20150	F-10-CAST	95701-08016-00	F-29A
94201-30250	F-10-CAST	95801-08040-00	F-17
94201-20150	F-10-SPOKE	95801-08045-00	F-17
94201-30250	F-10-SPOKE	95801-10035-00	F-20
94201-16150	F-17	96001-06020-00	E-1
94201-20150	F-18	96001-06095-00	E-1
94201-30250	F-18	96001-06022-00	E-4
94201-20150	F-19	96001-06014-00	E-4
94301-10120	E-2	96001-06040-00	E-5
94301-10120	E-8	96001-06035-00	E-7
94303-03050	E-9	96001-06028-00	E-7

95002-02089	E-13	96001-06025-00	E-7
95002-02659	E-13	96001-06016-00	E-7A
95002-02100	F-13	96001-06022-00	E-7A
95002-02080	F-13	96001-06060-00	E-8
95002-02130	F-15	96001-06018-07	F-2

<b>PART NO</b>	<b>BLOCK</b>
96001-06025-07	F-3
96100-62000-00	E-6
96100-60010-00	E-10
96100-62010-00	E-10
96100-62030-00	E-10
96140-63010-10	F-9-CAST
96140-63010-10	F-9-SPOKE
96140-63010-10	F-11-CAST
96140-63010-10	F-11-SPOKE
96150-62030-10	F-11-CAST
96150-62030-10	F-11-SPOKE
96211-08000	F-5
96211-08000	F-17
96220-30085	E-12
96600-08025-00	F-2
96700-06018-00	E-12
96700-05035-10	F-3
97252-51162-10	F-9-SPOKE
97252-51162-10	F-11-SPOKE
97603-51162-10	F-9-SPOKE
97687-51161-10	F-11-SPOKE
98200-31500	F-24-WITH-VISOR
98200-32000	F-24-WITH-VISOR
98200-31500	F-24A-WO-VISOR
98200-32000	F-24A-WO-VISOR
99001-14170	F-26
99007-45000	F-26
99101-KTT-0980	E-13
99103-KTR-0350	E-13

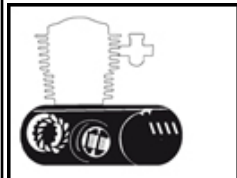
## BLOCK INDEX - GROUP Engine - ECO 125 (Feb, 2020).



E-1  
E-2  
E-3

CYLINDER HEAD  
CYLINDER  
CAM SHAFT/VALVE

1  
2  
3



E-4  
E-5  
E-6  
E-7  
E-7A  
E-7B

CAM CHAIN TENSIONER  
RIGHT CRANK CASE COVER  
CLUTCH  
LEFT CRANK CASE COVER  
A.C.GEN. ASSY. / STARTING CLUTCH  
STARTER MOTOR

4  
5  
6  
7  
8  
9



E-8  
E-8A  
E-9  
E-10  
E-11  
E-12  
E-13










CRANK CASE  
OIL PUMP  
CRANK SHAFT/PISTON  
TRANSMISSION  
KICK STARTER  
GEAR SHIFT  
CARBURETTOR

10  
11  
12  
14  
15  
16  
17











## BLOCK INDEX - GROUP Frame - ECO 125 (Feb, 2020).







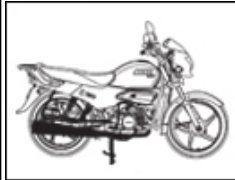
	F-1-WITH-VISOR	LIGHT ASSY. HEAD (VISOR)	18
	F-1A-WO-VISOR	LIGHT ASSY. HEAD (W/O VISOR)	19
	F-2	SPEEDOMETER/CABLE/KEY SET	20
	F-3	HANDLE LEVER/SWITCH/ CONTROL CABLE	21
	F-4	HANDLE PIPE/TOP BRIDGE	22
	F-5	STEERING STEM	23
	F-6	FRONT FENDER	24
	F-7-WITH-VISOR	FRONT FORK (VISOR)	25
	F-7A-WO-VISOR	FRONT FORK (W/O VISOR)	26








	F-8-CAST	FR. BRAKE PANEL	27
	F-8-SPOKE	FR. BRAKE PANEL	28
	F-9-CAST	FRONT WHEEL	29
	F-9-SPOKE	FRONT WHEEL	30
	F-10-CAST	REAR BRAKE PANEL	31
	F-10-SPOKE	REAR BRAKE PANEL	32
	F-11-CAST	REAR WHEEL	33
	F-11-SPOKE	REAR WHEEL	34



	F-12	SEAT ASSY./RR COWL/CARRIER REAR	35
	F-13	FUEL TANK	36
	F-14	SIDE COVER	37
	F-15	AIR CLEANER	38



	F-16	MUFFLER	39
	F-17	STEP ASSY./KICK STARTER/GEAR CHANGE PEDAL/SIDE STAND	40
	F-18	MAIN STAND/PEDAL BRAKE	41
	F-19	SWINGARM/CHAIN CASE	42
	F-20	REAR CUSHION	43

## BLOCK INDEX - GROUP Frame - ECO 125 (Feb, 2020).



F-21

REAR FENDER

44



F-22

WINKERS

45



F-23

TAIL LIGHT

46



F-24-WITH-VISOR

WIRE HARNESS (VISOR)

47



F-24A-WO-VISOR

WIRE HARNESS (W/O VISOR)

48



F-25

FRAME BODY/UTILITY BOX

49



F-26

TOOLS

50



F-27

STRIPES/MARKS

51



F-28

COVER SEAT / TPMS ASSY (OPTIONAL)

57



F-29

GUARD SARI

58



F-29A

GUARD ENGINE

59



F-30

CAUTION LABEL

60